



A000603638

OFFICE OF THE COUNTY RECORDER
CASS COUNTY, MINNESOTA
CERTIFIED, FILED, AND/OR
RECORDED ON

7/3/2014 10:38:38 AM

AS DOC #: A000603638

PAGES: 2

REC FEES: 0.00

KATHRYN M. NORBY
CASS COUNTY RECORDER

BY SR Dep

Twp 144 Rge 31 Index No. A.0-05.0

CERTIFICATE OF LOCATION OF GOVERNMENT CORNER

Closing Northeast of Section 6, Township 144 N., Range 31 W., 5th P.M.
State of Minnesota, County of Cass

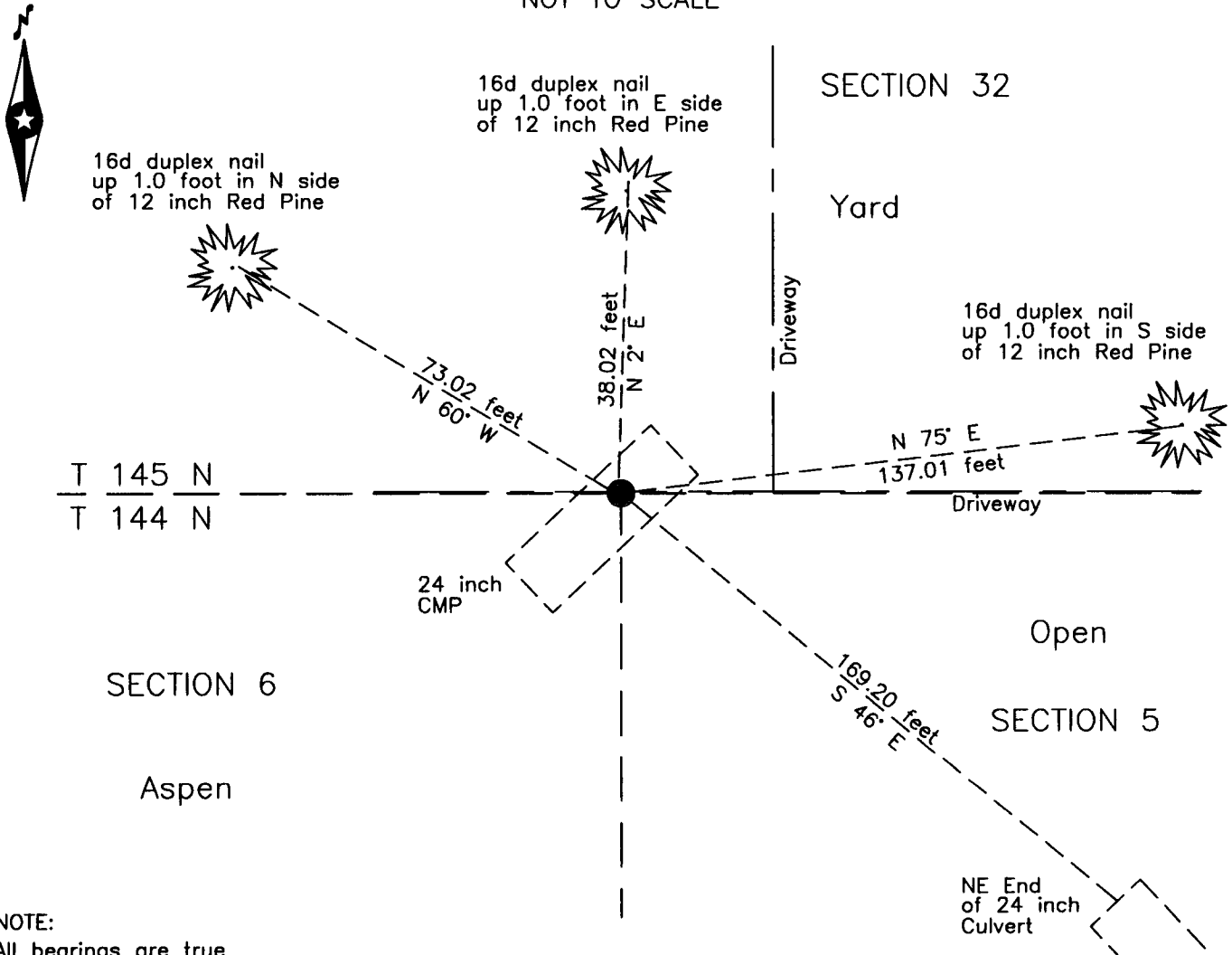
At the corner location shown on the sketch:

On _____ found _____

left monument as found lowered monument removed monument (explain)

On 30 June 2014 placed a 60d spike in top of 24 inch corrugated metal pipe,
in driveway between ditches.

SKETCH OF REFERENCE TIES
NOT TO SCALE



NOTE:
All bearings are true

Statement of evidence relative to this corner location is on the back of this page.

I hereby certify that this survey, plan or report was prepared by me or under my direct supervision and that I am a duly Licensed Land Surveyor under the laws of the State of Minnesota.

Terry L. Freeman, Cass County Surveyor

Date 7/2/14 MN License No. 21367

Page 1 of 2
A000603638



Index No. A.0-05.0

Statement of Evidence

Closing Northeast corner of Section 6, Township 144 North, Range 31 West, 5th P. M.

Aug. 1975 B.C. Baldwin, General Land Office (GLO) Deputy Surveyor, in the notes of the subdivision of Township 144 North, Range 31 West, set a post for the original corner and referenced it as follows:
8" Burr Oak S 40° E 84 links (55.44 feet) 8" Elm S 11° W 109 links (71.94 feet)
The above record is on file with the Minnesota Historical Society in St. Paul, Minnesota, copies are filed with the Cass County Highway Department, Surveyor's Office (CCHD/SO).

March 1910 J.D. Middleton, Survey Record No. 362, County Book B, page 577, on file in the CCHD/SO, states "in a marsh, the original closing corner post, with the field record cut thereon, was found in place, having been set according to the following U. S. B.Ts."
8" Burr Oak S 40° E 84 links (55.44 feet) 8" Elm S 11° W 109 links (71.94 feet)
New witnesses "to a X on top of 60d spike" as follows:
5" Oak hub S 49°47' E 66.97 feet 5" Oak hub S 20° W 78.15 feet

May 2007 B. Hippen, technician, records of the CCHD/SO, found a 90d spike near the PI of County Road #143 and located it with the Global Positioning System(GPS).

Oct. 2009 A.D. Larson, LS 14455, Certificate of Survey, on file in the CCHD/SO, indicates a found spike at the subject corner, near the road PI.

June 2014 B. Hippen, technician, records of the CCHD/SO, set a 60d spike in top of 24 inch corrugated metal pipe, there is 5 inches of fill over this pipe, said position being as found in 2007, near the PI of the new centerline of County Road No. 143 and witnessed as follows:
12" Red Pine N 60° W 73.02 feet 12" Red Pine N 2° E 38.02 feet
12" Red Pine N 75° E 137.01 feet 24" CMP End S 46° E 169.20 feet

The recovered and established references for the position are shown on the face of this document.

Analysis of the recovered record data, field evidence and survey measurements, indicates that the monument set by the CCHD/SO is the accepted location of this corner.

County Coordinates (Cass County North)

Northing 289861.60

Easting 394475.40