



A000603437

OFFICE OF THE COUNTY RECORDER  
CASS COUNTY, MINNESOTA  
CERTIFIED, FILED, AND/OR  
RECORDED ON

6/26/2014 12:53:29 PM

AS DOC #: A000603437

PAGES: 2

REC FEES: 0.00

KATHRYN M. NORBY  
CASS COUNTY RECORDER

BY SR Dep

Page 1 of 2 A000603437

Twp 137 Rge 32 Index No. R .0-25.0

### CERTIFICATE OF LOCATION OF GOVERNMENT CORNER

Northeast corner of Section 25, Township 137 N., Range 32 W., 5th P.M.  
State of Minnesota, County of Cass

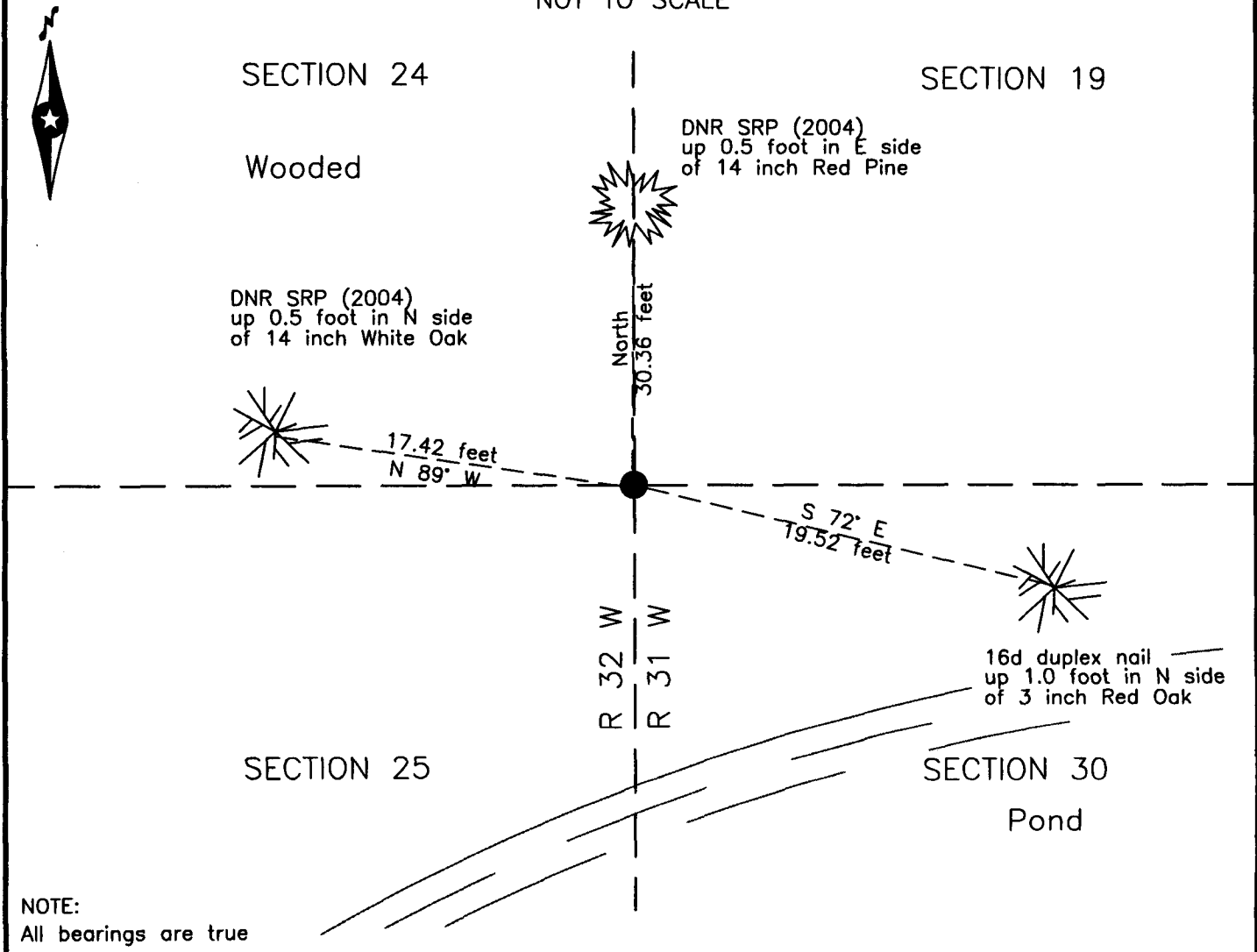
At the corner location shown on the sketch:

On 16 June 2014 found 3/4 inch iron rod, with DNR survey cap, up 0.2 foot,  
northwest of swamp.

left monument as found     lowered monument     removed monument (explain)

On \_\_\_\_\_ placed \_\_\_\_\_

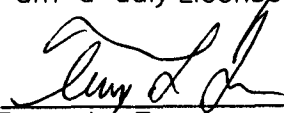
#### SKETCH OF REFERENCE TIES NOT TO SCALE



NOTE:  
All bearings are true

Statement of evidence relative to this corner location is on the back of this page.

I hereby certify that this survey, plan or report was prepared by me or under my direct supervision and that I am a duly Licensed Land Surveyor under the laws of the State of Minnesota.

  
Terry L. Freeman, Cass County Surveyor  
Date 6/25/14 MN License No. 21367



Statement of Evidence

**Northeast corner Section 25, Township 137 North, Range 32 West, 5th Principal Meridian.**

July, 1860 J.W. Myers, General Land Office (GLO) Deputy Surveyor, notes for the survey of the 4<sup>th</sup> Guide Meridian set a witness post for the original corner and referenced it as follows:  
10" W. Birch      N 40° W      12 links (7.92 feet)      10" W. Birch      N 35° E      22 links (14.52 feet)  
The above record is on file with the Minnesota Historical Society in St. Paul, Minnesota, copies are filed with the Cass County Highway Department, Surveyor's Office (CCHD/SO).

Oct. 2002 P.J. Axness, Minnesota Department of Natural Resources (DNR), Foothills State Forest, file SFT00019, on file in the Brainerd Office, searched for evidence of the corner and located a swamp.

Aug. 2004 J.D. Walker, LS 16098, DNR, Foothills State Forest, file SFT00019, on file in the Brainerd Office, set a 3/4 inch iron rod with survey cap, at a lost position on the range line between the found corners, near the northwest corner of the swamp and witnessed as follows:  
14" Norway Pine      North      30.36 feet      14" Oak      260°      17.42 feet

March 2011 B. Hippen, technician, records of the CCHD/SO, found a DNR Survey Marker, capped RLS 16098, up 0.2 foot, north of swamp and located with Global Positioning System.

June 2014 B. Hippen, technician, records of the CCHD/SO, found a DNR Survey Marker, capped RLS 16098, up 0.2 foot, north of Beaver pond. The recovered DNR witnesses and new witnesses are as follows:  
14" Norway Pine      North      30.36 feet      14" White Oak      N 89° W      17.42 feet  
3" Red Oak      S 72° E      19.52 feet

The recovered and established references for the position are shown on the face of this document.

**Analysis of the recovered record data, field evidence and survey measurements, indicates that the monument set by the DNR in 2004 is the accepted location of this corner.**

**County Coordinates (Cass County South)**

**Northing 283349.15**

**Easting 451399.30**