



A000603432

OFFICE OF THE COUNTY RECORDER
CASS COUNTY, MINNESOTA
CERTIFIED, FILED, AND/OR
RECORDED ON

6/26/2014 12:53:24 PM

AS DOC #: A000603432

PAGES: 2

REC FEES: 0.00

KATHRYN M. NORBY
CASS COUNTY RECORDER

BY SR Dep

Page 1 of 2 A000603432

Twp 137 Rge 32 Index No. M.2-25.0

CERTIFICATE OF LOCATION OF GOVERNMENT CORNER

Meander corner #3 of Section 13, Township 137 N., Range 32 W., 5th P.M.
State of Minnesota, County of Cass

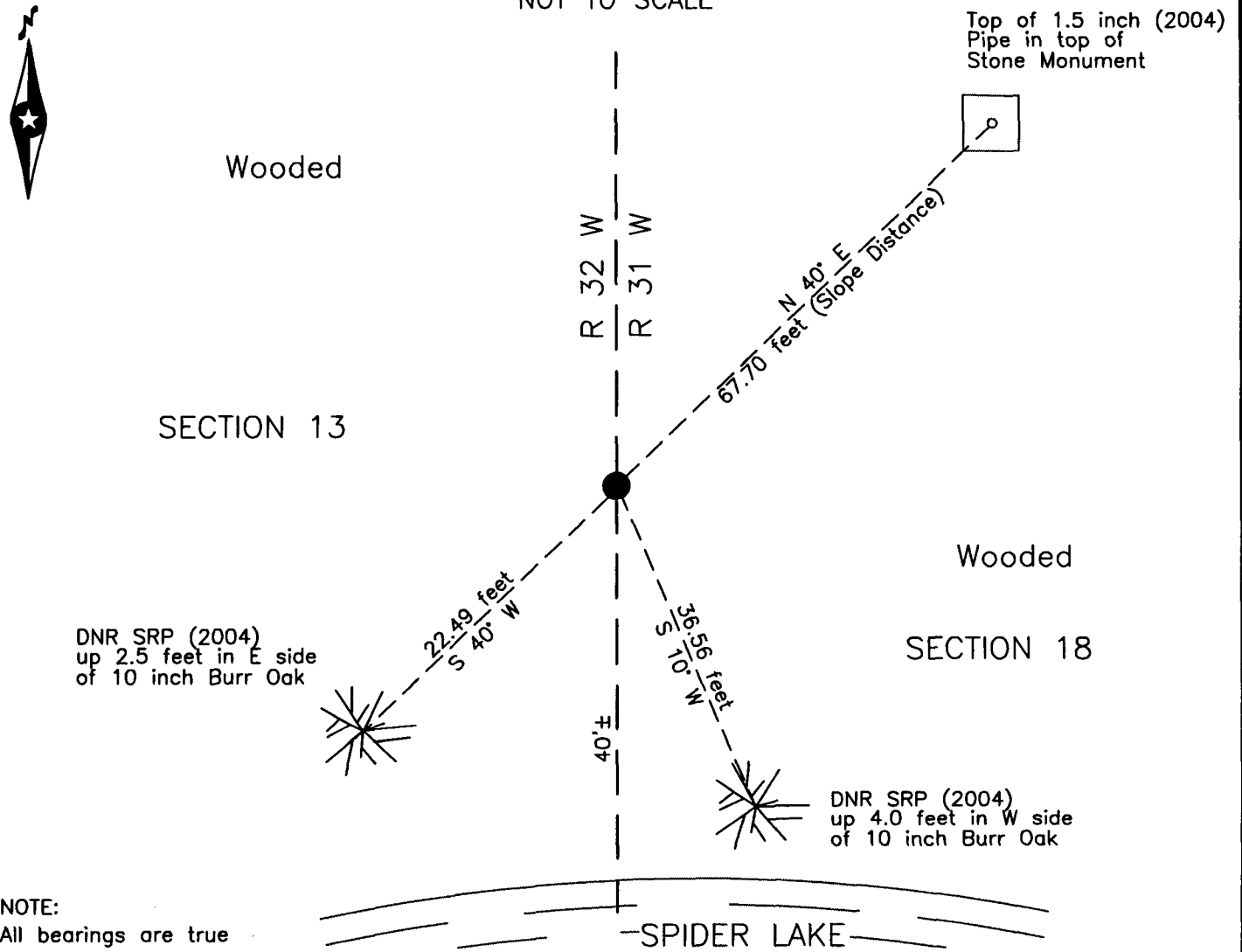
At the corner location shown on the sketch:

On 3 June 2014 found 3/4 inch iron rod, with DNR survey cap, flush,
40 feet± north of Spider Lake.

left monument as found lowered monument removed monument (explain)

On _____ placed _____

SKETCH OF REFERENCE TIES NOT TO SCALE



NOTE:
All bearings are true

Statement of evidence relative to this corner location is on the back of this page.

I hereby certify that this survey, plan or report was prepared by me or under my direct supervision and that I am a duly Licensed Land Surveyor under the laws of the State of Minnesota.

Terry L. Freeman, Cass County Surveyor

Date 6/25/14 MN License No. 21367



Statement of Evidence

Meander corner #3 Section 13, Township 137 North, Range 32 West, 5th Principal Meridian.

July, 1860 J.W. Myers, General Land Office (GLO) Deputy Surveyor, notes for the survey of the 4th Guide Meridian set a post for the original corner and referenced it as follows:
 12" Pine N 45° E 41 links (27.06 feet) 8" Pine N 15° W 62 links (40.92 feet)
 The above record is on file with the Minnesota Historical Society in St. Paul, Minnesota, copies are filed with the Cass County Highway Department, Surveyor's Office (CCHD/SO).

Aug. 2004 J.D. Walker, LS 16098, Minnesota Department of Natural Resources (DNR), Foothills State Forest, file SFT00019, on file in the Brainerd Office, set a 3/4 inch iron rod with survey cap, 40 feet, more or less North of the shore of Spider Lake, on line between the recovered Northeast corner of Section 13 and the recovered Northeast corner of Section 36, and witnessed as follows:
 10" Oak 170° 36.56 feet 1.5" I.P. in Stone Monument 40° 67.70 feet
 10" Oak 240° 22.49 feet

June 2014 B. Hippen, technician, records of the CCHD/SO, found the DNR survey marker, flush, 40 feet, more or less, North of Spider Lake, the DNR witnesses as follows:
 10" Burr Oak S 10° E 36.56 feet 1.5" I.P. in Stone Monument N 40° E 67.70 feet
 10" Burr Oak S 60° W 22.49 feet

The recovered and established references for the position are shown on the face of this document.

Analysis of the recovered record data, field evidence and survey measurements, indicates that the monument set by the DNR in 2004 is the accepted location of this corner.

County Coordinates (Cass County South)
 Northing 289624.88
 Easting 451416.33