



A000602212

OFFICE OF THE COUNTY RECORDER  
CASS COUNTY, MINNESOTA  
CERTIFIED, FILED, AND/OR  
RECORDED ON

5/8/2014 11:38:23 AM

AS DOC #: A000602212

PAGES: 2

REC FEES: 0.00

KATHRYN M. NORBY  
CASS COUNTY RECORDER

BY SR Dep

Page 1 of 2  
A000602212

Twp 140 Rge 28 Index No. N.0-25.0

### CERTIFICATE OF LOCATION OF GOVERNMENT CORNER

Northeast corner of Section 24, Township 140 N., Range 28 W., 5th P.M.  
State of Minnesota, County of Cass

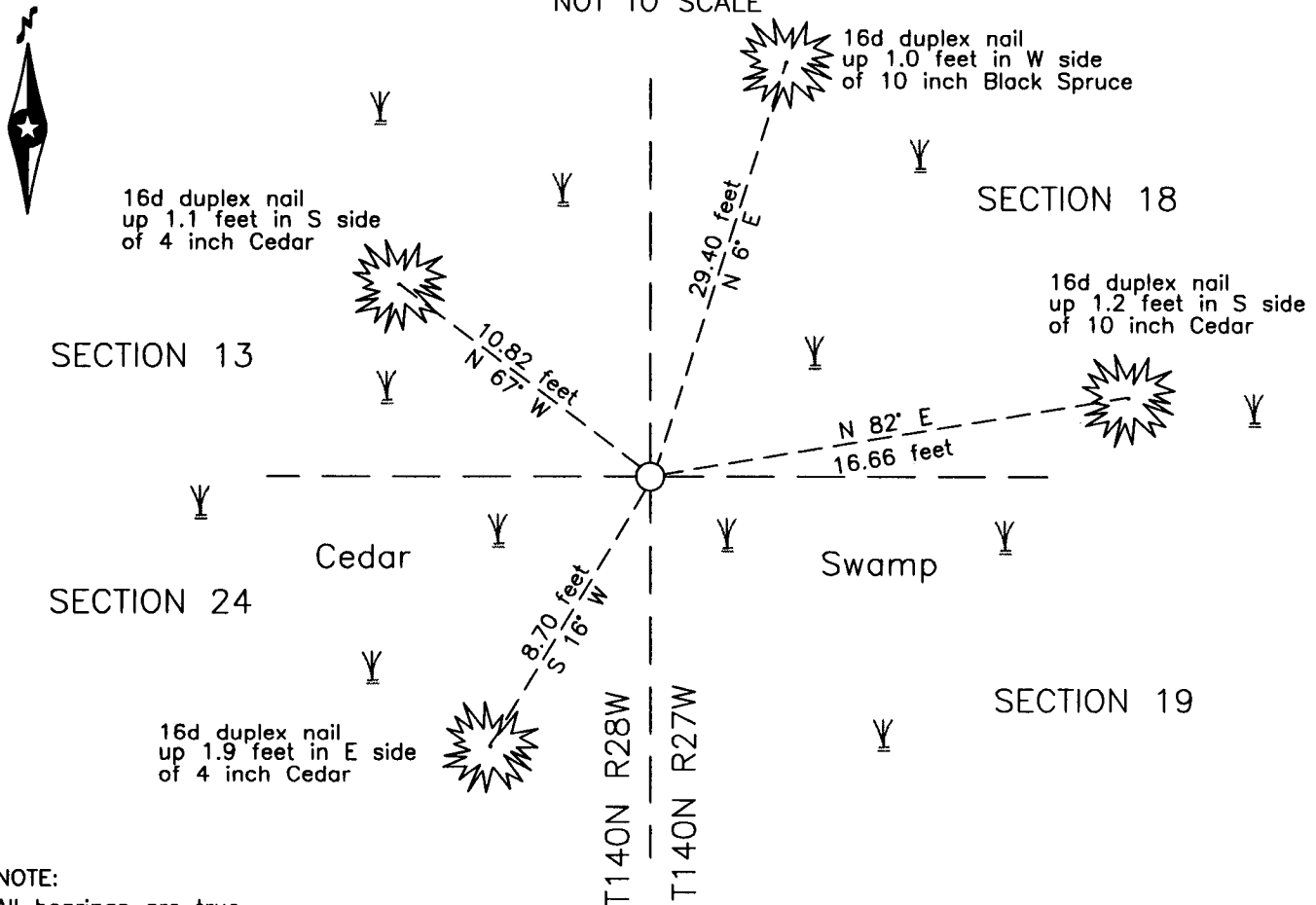
At the corner location shown on the sketch:

On 31 Jan. 2000 found a 2 inch ODIP, up 2.0 feet, in Cedar swamp

left monument as found     lowered monument     removed monument (explain)

On \_\_\_\_\_ placed \_\_\_\_\_

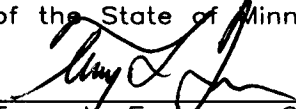
SKETCH OF REFERENCE TIES  
NOT TO SCALE



NOTE:  
All bearings are true

Statement of evidence relative to this corner location is on the back of this page.

I hereby certify that this survey, plan or report was prepared by me or under my direct supervision and that I am a duly Licensed Land Surveyor under the laws of the State of Minnesota.

  
Terry L. Freeman, Cass County Surveyor  
Date 5/7/14 MN License No. 21367

Statement of Evidence

**Northeast corner of Section 24, Township 140 North, Range 28 West, 5th Principal Meridian.**

- April 1863 Johnson and Thornton, General Land Office (GLO) Deputy Surveyors, notes for the Range Line between, Range 27 and 28 West, set a post for the original corner and referenced it as follows:  
 10" Cedar      N 32° E              6 links ( 3.96 feet)      10" Tamarack    S 48° E              13 links (8.58 feet)  
 14" Cedar      S 37° W              17 links (11.22 feet)      8" Cedar        N 37° W              8 links (5.28 feet)  
 The above record is on file with the Minnesota Historical Society in St. Paul, Minnesota, copies are filed with the Cass County Highway Department, Surveyor's Office (CCHD/SO).
- 1938 Civilian Conservation Corp. (CCC) personnel, notes on file in the Minnesota Department of Natural Resources (DNR), Outing Office, Washburn Lake Book 14, page 16 states at 5158' from South End iron pipe.
- 1941 CCC personnel, notes on file in the Minnesota DNR, Outing Office, Washburn Lake Book 9, page 7 states at 5280' from east – 4" Spruce stump for approx cor.
- 1983 T. Freeman, technician and Harrington, Land Commissioner, Cass County Land Corner Record, on file in the CCHD/SO, found a 2 inch I.P. up 2 feet and witnessed as follows:  
 4" Cedar      N 67° W              10.82 feet              4" Cedar        S 16° W              8.70 feet  
 10" Cedar      N 82° E              16.66 feet
- Feb. 2000 B. Hippen and C. Loe, technicians, records of the CCHD/SO, found 2 inch outside diameter iron pipe, up 2 feet, in a Cedar swamp, the 1983 witnesses are all good, add the following:  
 10" Black Spruce      N 6° E              29.40 feet

The recovered and established references for the position are shown on the face of this document.

**Analysis of the recovered record data, field evidence and survey measurements, indicates that the monument recovered by CCHD/SO in 2000 is the accepted location of this corner.**

**County Coordinates (Cass County North)**

Northing 147601.40  
 Easting 515650.38