



A000602204

OFFICE OF THE COUNTY RECORDER
CASS COUNTY, MINNESOTA
CERTIFIED, FILED, AND/OR
RECORDED ON

5/8/2014 11:38:15 AM

AS DOC #: A000602204

PAGES: 2

REC FEES: 0.00

KATHRYN M. NORBY
CASS COUNTY RECORDER

BY SR Dep

Page 1 of 2 A000602204

Twp 140 Rge 27 Index No. C.0-09.0

CERTIFICATE OF LOCATION OF GOVERNMENT CORNER

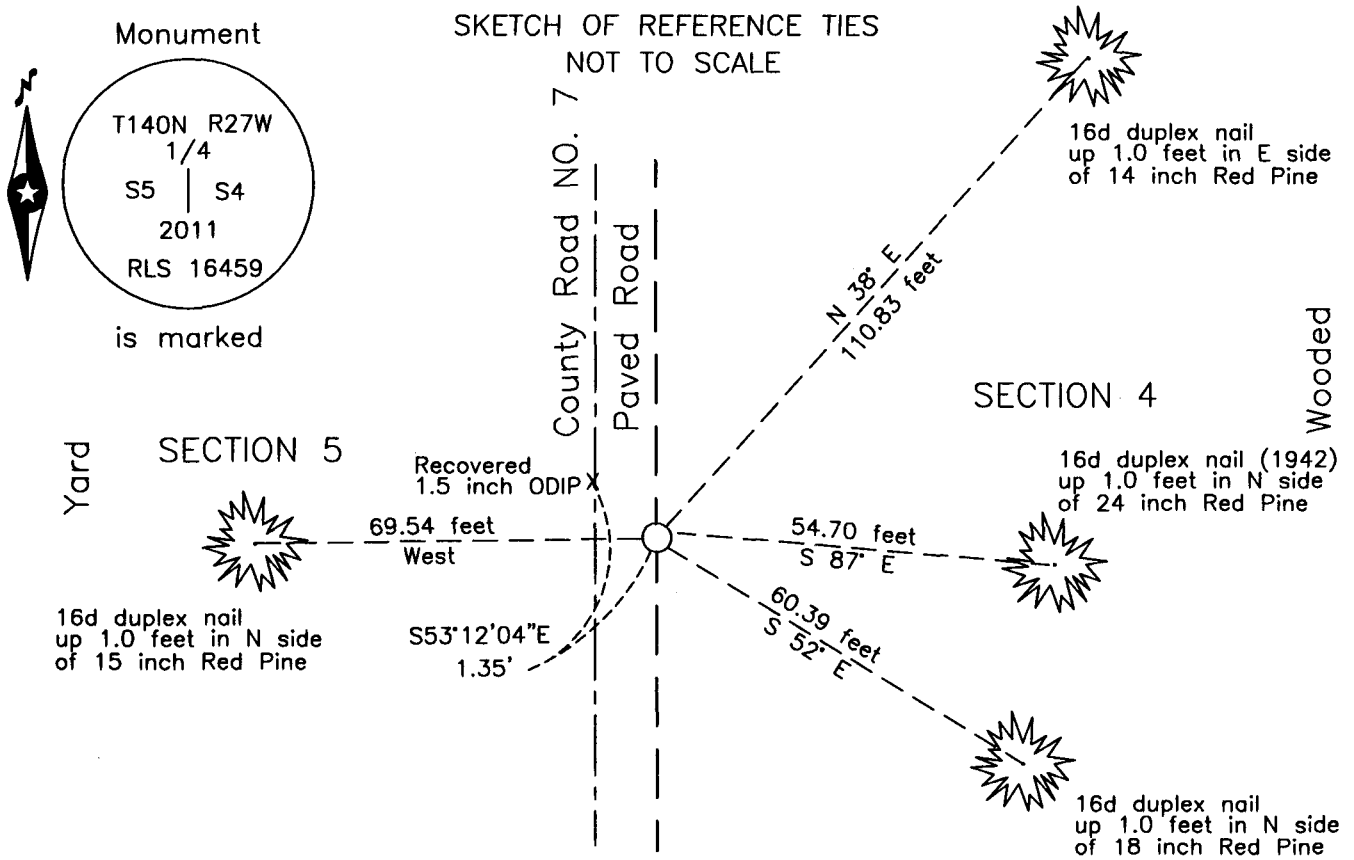
East Quarter corner of Section 5, Township 140 N., Range 27 W., 5th P.M.
State of Minnesota, County of Cass

At the corner location shown on the sketch:

On 9 Aug. 2011 found a rust ring, down 2.0 feet, vertical for 0.3', 1'± East of
centerline of CSAH #7.

left monument as found lowered monument removed monument (explain)

On 25 Oct. 2011 placed a 1 inch by 30 inch Aluminum tube with Aluminum cap,
down 0.05', 0.7 foot east of the new centerline of CSAH #7.



NOTE:
All bearings are true

Statement of evidence relative to this corner location is on the back of this page.

I hereby certify that this survey, plan or report was prepared by me or under my direct supervision and that I am a duly Licensed Land Surveyor under the laws of the State of Minnesota.

Terry L. Freeman, Cass County Surveyor
Date 5/7/14 MN License No. 21367

Statement of Evidence

East Quarter corner of Section 5, Township 140 North, Range 27 West, 5th Principal Meridian.

- Dec. 1873 F.G. Winston, General Land Office (GLO) Deputy Surveyor, notes for the subdivision of Township 140 North, Range 27 West, set a post for the original corner and referenced it as follows:
 8" N. Pine N 86°30' E 25 links (16.50 feet) 8" N. Pine S 17°15' W 50 links (33.00 feet)
 The above record is on file with the Minnesota Historical Society in St. Paul, Minnesota, copies are filed with the Cass County Highway Department, Surveyor's Office (CCHD/SO).
- May 1942 J.W. Curo, LS 1428, Curo Book 243, page 62, on file in the CCHD/SO, states "set Nail hub CL N-S Road True ¼ Cor bet 4-5-140-27 Focus So on true line turn 89° 431/2' R and run West on true E - W CL sec 5 140-27. @ 33.00 set RR spike Hub @ 75 same." Also states "Pull up nail and set 2 x 16" pipe." He notes the following new witness:
 20" N. Pine N 26°40' E 82.15 feet 16" N. Pine S 46°35' W 59.10 feet
 8" N. Pine S 87°12' E 54.50 feet
- May 1949 H.J. Curo, LS 3417, Curo Book 243, page 124, on file in the CCHD/SO, lists the 1942 witnesses and states "We chain in from the two tree still standing green dig down 7 inches & find 2" pipe set by J.W.C. for True ¼ Cor bet sec 4-5 140-27." He notes the following new witness:
 20" N. Pine N 57°06' W 117.4 feet
- Sept. 1952 H.J. Curo, LS 3417, Cass County Surveyor Book D, page 395, on file in the CCHD/SO, states "I set a iron monument 2 x 30 inch for the true ¼ corner and mark the following":
 20" N. Pine N 57°06' W 117.4 feet 20" N. Pine N 26°40' E 82.15 feet
- June 1984 W.E. Curo, LS 11395, Curo Book 304, page 155, on file in the CCHD/SO, File 1061 for Donald Edwards, notes indicate the subject corner.
- Jan 1996 W.E. Curo, LS 11395, Curo Book 334, page 59, on file in the CCSO, File 2386 for Gary Slagle, notes indicate the subject corner and file contains a breakdown of Section 4.
- 1963 Cass County Highway Department(CCHD), S.P. 11-607-02, on file in the CCHD, plan indicates corner assumed at Station 272+44.
- June 2011 B. Hippen, technician, records of the CCHD/SO, found a 1.5 inch outside diameter iron pipe, down 0.3 foot, on centerline of CSAH # 007, 37 feet, more or less North of fence line to the West.
- Aug. 2011 B. Hippen, technician and P. Swentkofske, CCHD equipment operator, records of the CCHD/SO, prior to reconstruction of CSAH # 007, excavated a 6 foot east-west by 6 foot north-south area based on record dimensions. The dig was 2 feet deep to natural soil. A rust ring was recovered down 2.0 feet and followed vertically for 0.3 foot. This is 1 foot, more or less, east of centerline and fits the 1942 bearing and distance to a 24" Red Pine.
- Oct. 2011 B. Hippen, technician, records of the CCHD/SO, set a 1 inch by 30 inch aluminum tube with aluminum cap at the rust ring location, which fit well with the 1942 witness tree, down 0.05 foot, 0.7 foot, more or less East of new centerline and witnessed as follows:
 24" N. Pine S 87° E 54.70 feet(1942) 18" N. Pine S 52° E 60.39 feet
 14" N. Pine N 38° E 110.83 feet 15" N. Pine West 69.54 feet

The recovered and established witnesses for this corner position are shown on the face of this document.

Analysis of the recovered record data, field evidence and survey measurements, indicates that the monument set in 2011 by the CCHD/SO, is the accepted location of this corner.

County Coordinates (Cass County North)

Northing 160851.71
Easting 525723.87