

CERTIFICATE OF LOCATION OF GOVERNMENT CORNER

Northeast Corner of Section 33
Township 145 N , Range 28 W , 5th P.M.
STATE OF MINNESOTA, COUNTY OF CASS



A000601885

**OFFICE OF THE COUNTY RECORDER
CASS COUNTY, MINNESOTA
CERTIFIED, FILED, AND/OR
RECORDED ON**

4/24/2014 11:39:41 AM

AS DOC #: A000601885

PAGES: 3

REC FEES: 0.00

**KATHRYN M. NORBY
CASS COUNTY RECORDER**

BY SR Dep

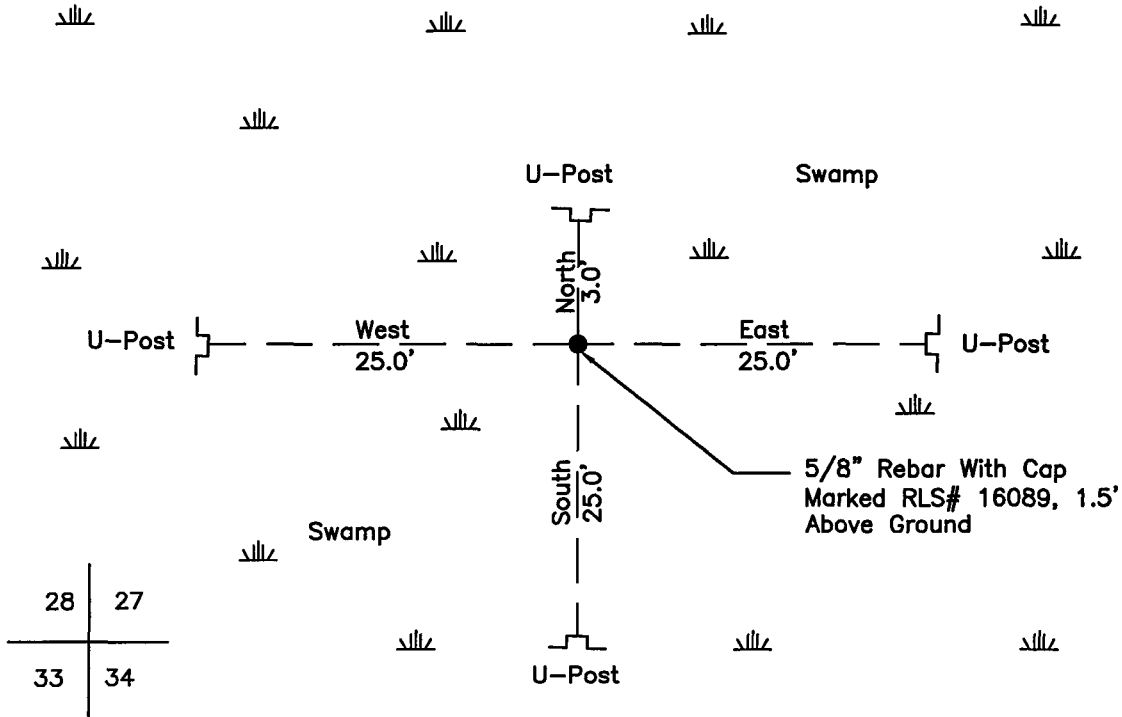
On 04/30/2010, found a(n): 5/8" Rebar With Cap Marked
RLS# 16089, 1.5' Off Ground

- left monument as found
- removed monument (explain)
- lowered monument
- raised monument

On _____, set a(n): _____

See "Statement of Evidence" for further details (on back)

(reserved for recording data)



"SKETCH OF REFERENCE TIES" (not to scale - bearings are magnetic)

Ties are measured to center of monument unless otherwise noted.

UNITS = Metric English

UTM COORDINATES, ZONE 15

Northing: 17203567.010

Easting: 1336769.346

NAD 83/1996 Adjustment.

Obtained by RTK GPS observations.

I hereby certify that this survey, plan, or report was prepared by me or under my direct supervision, and that I am a duly Licensed Land Surveyor under the laws of the State of Minnesota.

Ross Wamre
signature

6/24/13
date

Ross Wamre, Minnesota License No. 45334



STATEMENT OF EVIDENCE: Section Corner common to Sections 27, 28, 33 and 34 of Township 145 North, Range 28 West of the 5th Principal Meridian.

1873; This corner was originally established by P. H. Conger, his field notes indicate that this corner was marked by a post and witnessed by:

Jack Pine 12" North 12^o West, 62 links
Jack Pine 10" South 30^o West, 70 links
Ash 6" South 45^o East, 90 links
Tamarack 4" North 72^o East, 81 links

1922; C.J. Bark, Cass County Highway Department Book #147 Page 3, wood post at 5168' from west 6' South of line.

1928; USFS 874 form on file at the USFS office in Cass Lake, MN show R.O. Taylor, USFS, found a hardwood stake 3' above ground.

1934; USFS 874 form on file at the USFS office in Cass Lake, MN show Frank Elliott, USFS, found stake in good condition 3.5' above ground. Post is in a meadow. It was scribed and dated Feb. 2, 1928.

1936; USFS Notes of Township 145 North, Range 28 West, Book 1 Page 28, on file at the USFS office in Cass Lake, MN, show J.A. Gjelhaug, RLS #1337, found the point of the old corner post. His information was recorded in "Tower Book #88" (an old field book) page 15. He witnessed the corner by:

Dead Jack Pine 10" South 50^o West, 34.3' (1873 Tie)
Elm 10" North 38^o 15' West, 60.1' Marked: JAG, set FSLP
Cedar 10" South 12^o East, 44.9' Marked: JAG

1978; USFS Notes of Township 145 North, Range 28 West, Book 1 Page 28, on file at the USFS office in Cass Lake, MN, show Curt Krause, Lloyd Sobieck and Dennis Parker, USFS, found a 4" x 4" x 48" long wood post with scribe visible in an open marsh witnessed by:

Elm Snag 16" North 38^o West, 60.1 scribe visible (1936 Tie)
Cedar Windfall 15" (no bearing) 44.9' (1936 Tie)
Cedar 18" South, 67.8' set FSLP
Set 5" x 5" x 8' Ash Post beside Scribed Post

2002; Cass County Certificate of Survey in Section 27, Township 145 North, Range 28 West for Bob Kline Document No. 1634, on File at the Cass County Surveyor's office, shows LaVerne Leuelling, RLS #16089, set a 5/8" Rebar with a Cap Stamped RLS #16809 at this corner location.

2004; USFS Notes of Township 145 North, Range 28 West, Book 1 Page 28, on file at the USFS office in Cass Lake, MN, show R. Main, USFS, found a 1/2" iron pipe with a plastic cap marked RLS #16089.

2010; A Kadrmas, Lee & Jackson survey crew found a 5/8" Rebar with cap marked RLS 16089 1.5' above ground, witnesses found and established as shown on face of this certificate.



2012; Ross Wamre, RLS #45334, after analysis of record and survey information accepts this monument as the correct perpetuation of the corner.

Contacts pertaining to this corner are as follows:

Cass County Recorder's Office

Cass County Engineers Office

Cass County Surveyors Office

Northern Engineering and Consulting Inc.

United States Forest Service

MnDOT – District Office 2

Bureau of Indians Affairs – Bemidji

Bureau of Land Management's (BLM) Northeastern States Field Office