

CERTIFICATE OF LOCATION OF GOVERNMENT CORNER

East Quarter Corner of Section 26
Township 145 N , Range 28 W , 5th P.M.
STATE OF MINNESOTA, COUNTY OF CASS



A000601884

OFFICE OF THE COUNTY RECORDER
CASS COUNTY, MINNESOTA
CERTIFIED, FILED, AND/OR
RECORDED ON

4/24/2014 11:39:40 AM

AS DOC #: A000601884

PAGES: 3

REC FEES: 0.00

KATHRYN M. NORBY
CASS COUNTY RECORDER

BY SR Dep

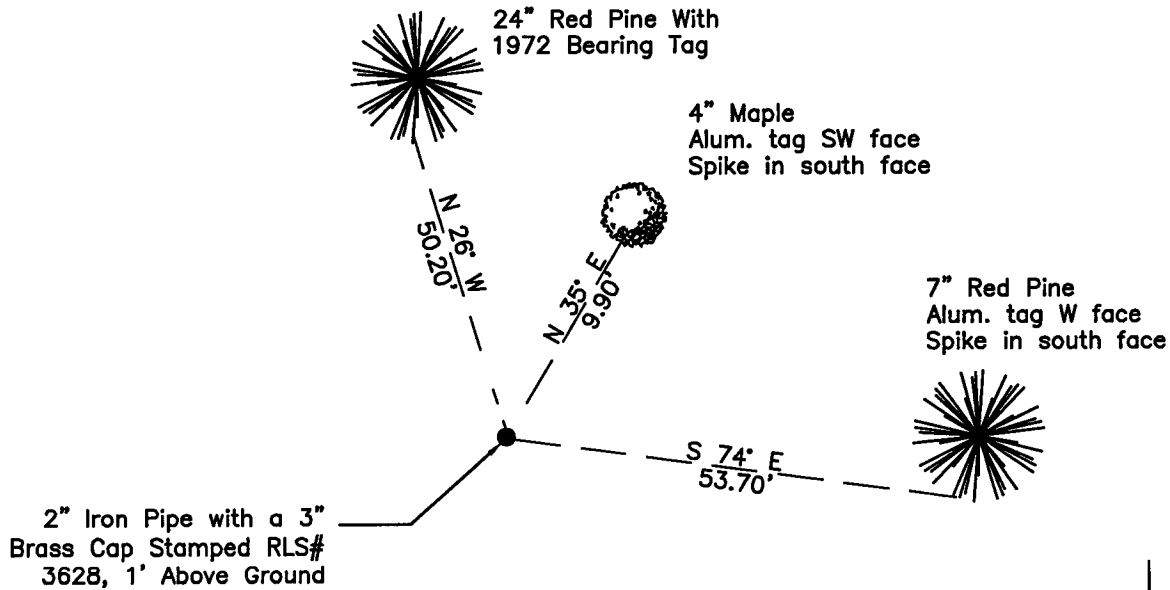
On 05/06/2010, found a(n): 2" Iron Pipe with a 3" Brass
Cap Stamped RLS# 3628, 1' Above Ground

- left monument as found
- removed monument (explain)
- lowered monument
- raised monument

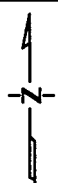
On _____, set a(n): _____

See "Statement of Evidence" for further details (on back)

(reserved for recording data)



26 | 25



"SKETCH OF REFERENCE TIES" (not to scale - bearings are magnetic)

Ties are measured to center of monument unless otherwise noted.

UNITS = Metric English

UTM COORDINATES, ZONE 15

Northing: 17206154.590

Easting: 1347082.550

NAD 83/1996 Adjustment.

Obtained by RTK GPS observations.

I hereby certify that this survey, plan, or report was prepared by me or under my direct supervision, and that I am a duly Licensed Land Surveyor under the laws of the State of Minnesota.

Ross Wamre
signature

6/24/12
date

Ross Wamre, Minnesota License No. 45334

Page 1 of 3 A000601884



STATEMENT OF EVIDENCE: Quarter Corner common to Sections 25 and 26 of Township 145 North,
Range 28 West of the 5th Principal Meridian

1873; This corner was originally established by P.H. Conger for the GLO. His field notes indicate a post set at this corner position, witnessed by:

Norway Pine 14" South 84° West, 20 links (13.2')
Jack Pine 14" South 80° East, 30 links (19.8')

1898; Great Northern Railway right-of-way plat shows an alignment tie to this corner location. Information on file with the Minnesota Department of Transportation.

1904; U.S. Army Corps of Engineers recovered this corner according to Township 145 N Range 28 W flowage map for the Lake Winnibigoshish Reservoir. Map on file with the USFS office in Cass Lake.

1946; State of Minnesota Department of Highways Right-of-Way Map Index map file 13-12 shows a scribed post in place at this corner location. Information on file with the Minnesota Department of Transportation.

1958; Pete Meyer, RLS #3628, USFS Book 1 of Township 145 North, Range 28 West, page 2, found a 3" square post and bearing tree stumps and proceeded to set a 2" diameter, 5' long galvanized wrought iron pipe filled with concrete and capped with a 3" diameter bronze tablet stamped RLS# 3628. An Affidavit as to Location of Government Corner is on file with the Cass County Office of Register of Deeds. Corner is witnessed by:

Red (Norway) Pine Stump 20" South 84° West, 13.2' (1873 tie)
Jack Pine (Stump Hole) South 80° East, 30 links 19.8' (1873 tie)

New BT:

Jack Pine 12" South 27° West, 45.3'
Jack Pine 11" North 24° East, 5.7'
Jack Pine 11" South 59° East, 18.0'

1972; Curtis Krause, USFS Book 1 of Township 145 North, Range 28 West, page 2, found iron in good condition with all BT's dead and re-witnessed the corner.

Jack Pine (Stump) South 27° West, 45.3' (1958 tie)
Jack Pine (Snag) 13" North 24° East, 5.7' (1958 tie)
Jack Pine (Snag) 12" South 59° East, 18.0' (1958 tie)

New BT:

White Pine 5" North 72° West, 45.6' scribed with BT
Norway Pine 18" North 26° West, 50.2' scribed ¼ S 26 BT
Maple 9" East, 44.9' scribed ¼ S 25 BT
72" Steel Sign Post North, 2.0' with 54-4 Sign Attached
72" Steel Sign Post East, 2.7' with 54-4 & 54-2 Sign Attached



2010; A Kadrmas, Lee & Jackson survey crew found a 2" Iron Pipe with a 3" Brass cap firmly set, 1' above ground, stamped RLS # 3628 and witnessed. Witnesses found and established as shown on the front of this certificate.

2012; Ross Wamre, RLS #45334, after analysis of record and survey information accepts this monument as the correct perpetuation of the corner.

Contacts pertaining to this corner are as follows:

Cass County Recorder's Office

Cass County Engineers Office

Cass County Surveyors Office

Northern Engineering and Consulting Inc.

United States Forest Service

MnDOT – District Office 2

Bureau of Indians Affairs – Bemidji

Bureau of Land Management's (BLM) Northeastern States Field Office