

CERTIFICATE OF LOCATION OF GOVERNMENT CORNER

Standard Southeast Corner of Section 35
Township 145 N , Range 28 W , 5th P.M.
STATE OF MINNESOTA, COUNTY OF CASS

A000601883
OFFICE OF THE COUNTY RECORDER
CASS COUNTY, MINNESOTA
CERTIFIED, FILED, AND/OR
RECORDED ON

4/24/2014 11:39:39 AM

AS DOC #: **A000601883**

PAGES: **2**

REC FEES: **0.00**

KATHRYN M. NORBY
CASS COUNTY RECORDER

BY SR Dep

On _____, found a(n): _____
DATE

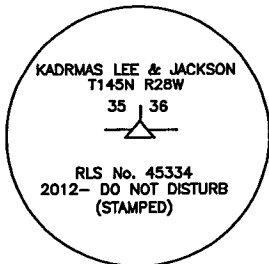
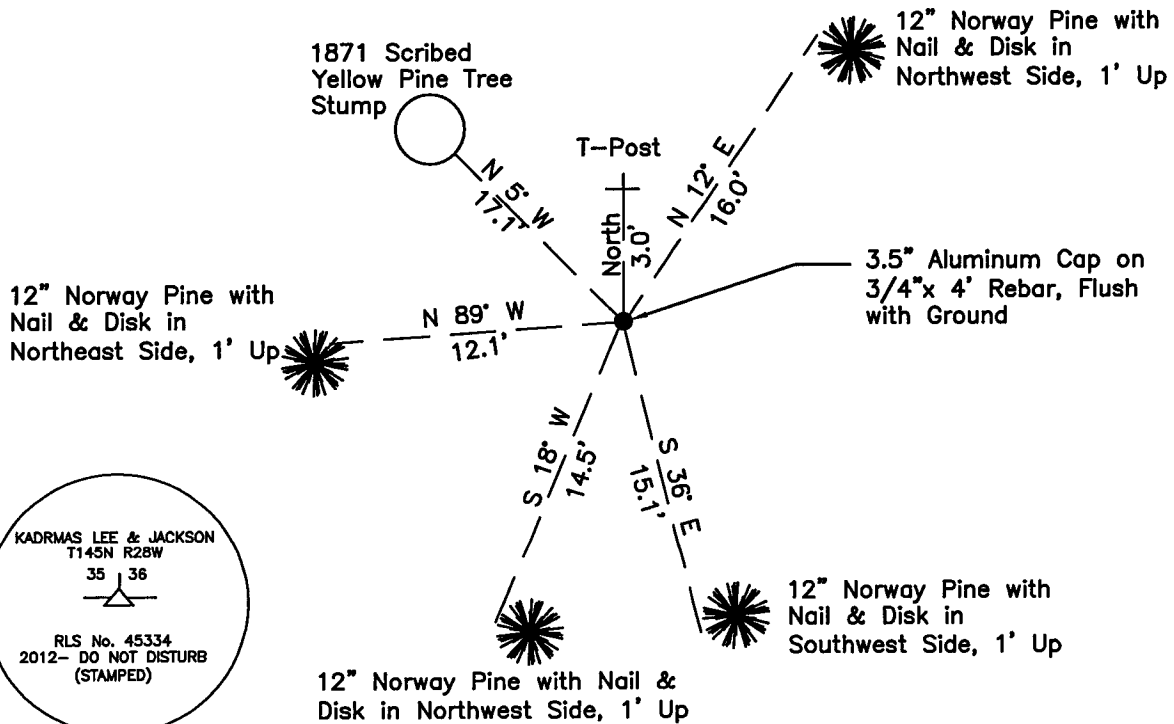
- left monument as found
- removed monument (explain)
- lowered monument
- raised monument

On 03/14/2012, set a(n): 3.5" Aluminum Cap on 3/4"x 4'
Rebar. Flush with Ground
DATE

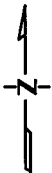
See "Statement of Evidence" for further details (on back)

(reserved for recording data)

NOTE: Norway Pine Plantation



"SKETCH OF REFERENCE TIES" (not to scale - bearings are magnetic)



Ties are measured to center of monument unless otherwise noted.

UNITS = Metric English

UTM COORDINATES, ZONE 15

Northing: 17198146.970

Easting: 1347510.996

NAD 83/1996 Adjustment.

Obtained by RTK GPS observations.

I hereby certify that this survey, plan, or report was prepared by me or under my direct supervision, and that I am a duly Licensed Land Surveyor under the laws of the State of Minnesota.

Ross Wamre
signature

6/18/13
date

Ross Wamre, Minnesota License No. 45334



STATEMENT OF EVIDENCE: Standard Section Corner common to Sections 35 and 36 of Township 145 North, Range 28 West of the 5th Principal Meridian

1871; This corner was originally established by G.R. Stuntz his field notes indicate a post set at this corner position, witnessed by:

Birch 10", North 70° East, 23 links
Yellow Pine 15", North 5° West, 26 links

1900; Bena-Six Mile Lake Road Calendar, Cass County, Book A, page 37, shows this corner as being found and distances established to the South Quarter corner of Section 35 and the Northeast Closing corner to Section 2, T 144 N, R 28 W.

2010; A Kadrmas, Lee & Jackson survey crew found a 1871 scribed stump of the yellow pine bearing tree.

2012; Ross Wamre, RLS #45334, after analysis of the original survey notes and the accessory evidence recovered, set a 3.5" Aluminum Cap on ¾" x 4' Rebar, flush according to record bearing and distance from the accessory recovered. Witnesses found and established as shown on the face of this certificate.

Contacts pertaining to this corner are as follows:

Cass County Recorder's Office
Cass County Engineers Office
Cass County Surveyors Office
Northern Engineering and Consulting Inc.
United States Forest Service
MnDOT – District Office 2
Bureau of Indians Affairs – Bemidji
Bureau of Land Management's (BLM) Northeastern States Field Office