

CERTIFICATE OF LOCATION OF GOVERNMENT CORNER

East Quarter Corner of Section 35
Township 145 N , Range 28 W , 5th P.M.
STATE OF MINNESOTA, COUNTY OF CASS



A000601881

OFFICE OF THE COUNTY RECORDER
CASS COUNTY, MINNESOTA
CERTIFIED, FILED, AND/OR
RECORDED ON

4/24/2014 11:39:37 AM

AS DOC #: A000601881

PAGES: 2

REC FEES: 0.00

KATHRYN M. NORBY
CASS COUNTY RECORDER

BY SR _____ Dep

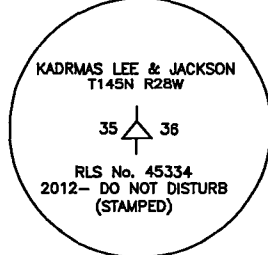
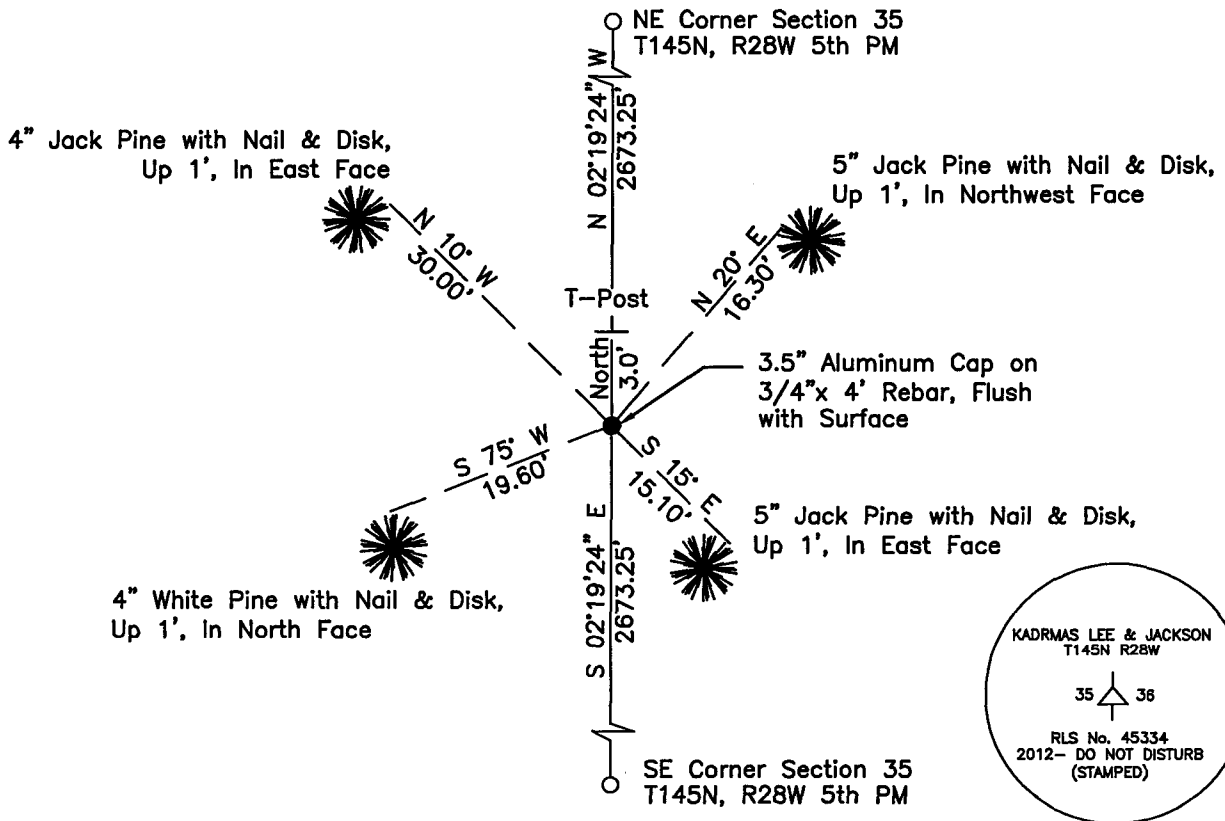
On _____, found a(n): _____
cap

- left monument as found
- lowered monument
- removed monument (explain)
- raised monument

On 04/10/2012, set a(n): 3.5" Aluminum Cap on 3/4" x 4' Rebar Flush with Surface

See "Statement of Evidence" for further details (on back)

(reserved for recording data)



"SKETCH OF REFERENCE TIES"
(not to scale - bearings are magnetic)

Ties are measured to center of monument unless otherwise noted.

UNITS = Metric English

UTM COORDINATES, ZONE 15

Northing: 17200818.080

Easting: 1347402.696

NAD 83/1996 Adjustment.
Obtained by RTK GPS observations.

I hereby certify that this survey, plan, or report was prepared by me or under my direct supervision, and that I am a duly Licensed Land Surveyor under the laws of the State of Minnesota.

Ross Wamre
signature

6/24/13
date

Ross Wamre, Minnesota License No. 45334

Page 1 of 2 A000601881



STATEMENT OF EVIDENCE: Quarter Corner common to Sections 35 and 36 of Township 145 North,
Range 28 West of the 5th Principal Meridian.

1873; This corner was originally established by P. H. Conger for the GLO. His field notes indicate that this corner was marked by a post and witnessed by:

Norway Pine 14" dia. South 28° East, 21 Links
Norway Pine 16" dia. South 79° West, 14 Links

2010; A Kadrmas, Lee & Jackson visited this corner location and recovered no evidence

2012; Ross Wamre, RLS #45334, set a 3.5" Aluminum Cap on a ¾" x 4' rebar flush by lost single proportionate methods. Witnesses found and established as shown on face of this certificate.

Contacts pertaining to this corner are as follows:

Cass County Recorder's Office

Cass County Engineers Office

Cass County Surveyors Office

Northern Engineering and Consulting Inc.

United States Forest Service

MnDOT – District Office 2

Bureau of Indians Affairs – Bemidji

Bureau of Land Management's (BLM) Northeastern States Field Office