

CERTIFICATE OF LOCATION OF GOVERNMENT CORNER

East Quarter Corner of Section 31
Township 145 N , Range 28 W , 5th P.M.
STATE OF MINNESOTA, COUNTY OF CASS



A000601880

OFFICE OF THE COUNTY RECORDER
CASS COUNTY, MINNESOTA
CERTIFIED, FILED, AND/OR
RECORDED ON

4/24/2014 11:39:36 AM

AS DOC #: A000601880

PAGES: 2

REC FEES: 0.00

KATHRYN M. NORBY
CASS COUNTY RECORDER

BY SR _____ Dep

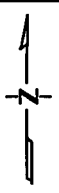
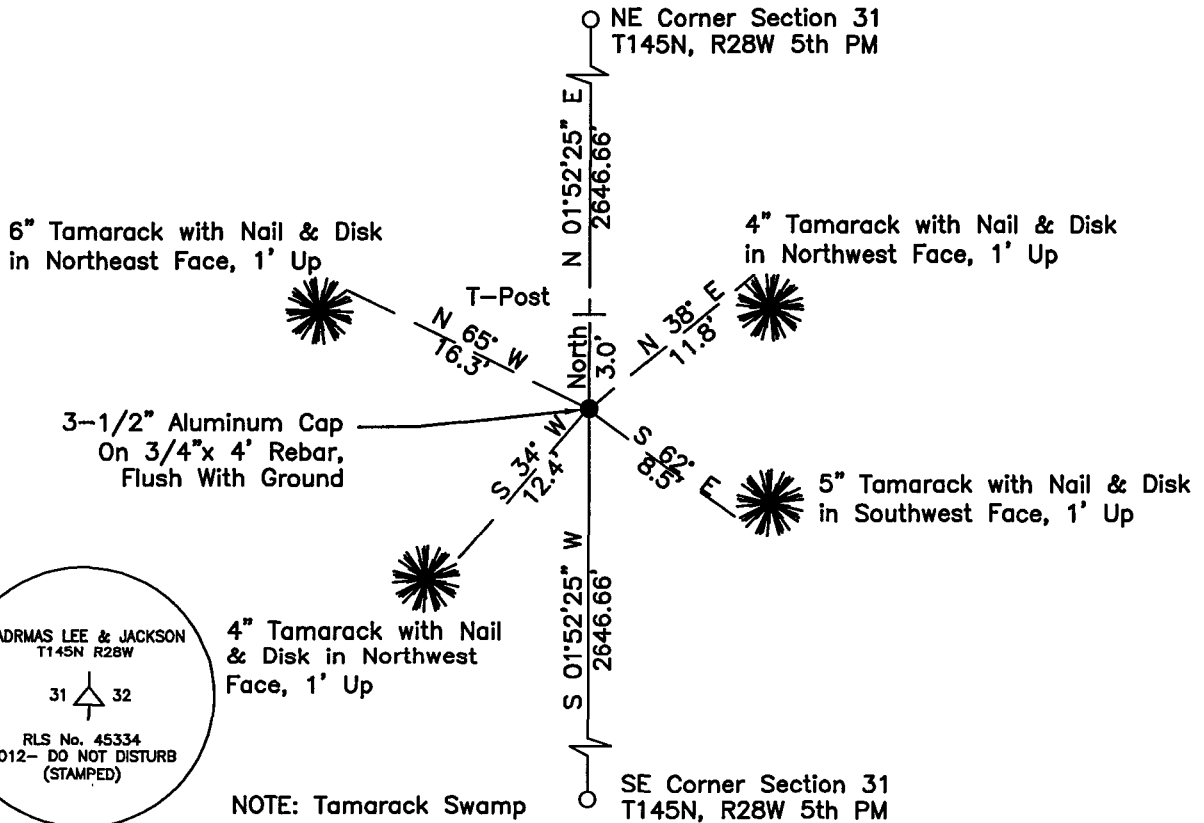
On _____, found a(n): _____
DATE

- left monument as found
- lowered monument
- removed monument (explain)
- raised monument

On 03/15/2012, set a(n): 3-1/2" Aluminum Cap On 3/4"x 4' Rebar. Flush With Ground
DATE

See "Statement of Evidence" for further details (on back)

(reserved for recording data)



"SKETCH OF REFERENCE TIES" (not to scale - bearings are magnetic)

Ties are measured to center of monument unless otherwise noted.

UNITS = Metric English

UTM COORDINATES, ZONE 15

Northing: 17200927.770

Easting: 1326143.362

NAD 83/1996 Adjustment.

Obtained by RTK GPS observations.

I hereby certify that this survey, plan, or report was prepared by me or under my direct supervision, and that I am a duly Licensed Land Surveyor under the laws of the State of Minnesota.

Ross Wamre
signature

6/10/12
date

Ross Wamre, Minnesota License No. 45334



STATEMENT OF EVIDENCE: Quarter Corner common to Sections 31 and 32 of Township 145 North, Range 28 West of the 5th Principal Meridian.

1873; This corner was originally established by P. H. Conger, his field notes indicate that this corner was marked by a post and witnessed by:

Jack Pine 10" dia. South 76° West, 148 Links

1904; U.S. Army Corps of Engineers recovered this corner according to Township 145 N Range 28 W flowage map for the Lake Winnibigoshish Reservoir. Map on file with the USFS office in Cass Lake.

1959; USFS 874 forms on file at the USFS office in Cass Lake, MN, show Stanley Morrison could not find any evidence of the original corner stake or BT's. Morrison placed a metal location poster on a 5" Tamarack and painted a blue line east, a quarter mile to the sixteenth corner.

1967; James Ebstorm, USFS Book 1 of Township 145 North, Range 28 West, page 13, found a Forest Service Location Poster at the corner location, no evidence of original corner or BT were found.

2010; A Kadrmas, Lee & Jackson survey crew found no evidence of the original corner or Morrison's Tag.

2012; Ross Wamre, RLS #45334, set a 3 ½" stamped Aluminum Cap on ¾" x 4' rebar, flush at a lost single proportionate measurement location. As measured from the Northeast Corner of Section 31-145-28 and the Standard Southeast Corner of Section 31-145-28. Witness found and established as shown on the front of this certificate.

Contacts pertaining to this corner are as follows:

Cass County Recorder's Office
Cass County Engineers Office
Cass County Surveyors Office
Northern Engineering and Consulting Inc.
United States Forest Service
MnDOT – District Office 2
Bureau of Indians Affairs – Bemidji
Bureau of Land Management's (BLM) Northeastern States Field Office