

CERTIFICATE OF LOCATION OF GOVERNMENT CORNER

East Quarter Corner of Section 30
Township 145 N, Range 28 W, 5th P.M.
STATE OF MINNESOTA, COUNTY OF CASS



A000601872

OFFICE OF THE COUNTY RECORDER
CASS COUNTY, MINNESOTA
CERTIFIED, FILED, AND/OR
RECORDED ON

4/24/2014 11:39:28 AM

AS DOC #: A000601872

PAGES: 2

REC FEES: 0.00

KATHRYN M. NORBY
CASS COUNTY RECORDER

BY SR Dep

On _____, found a(n): _____

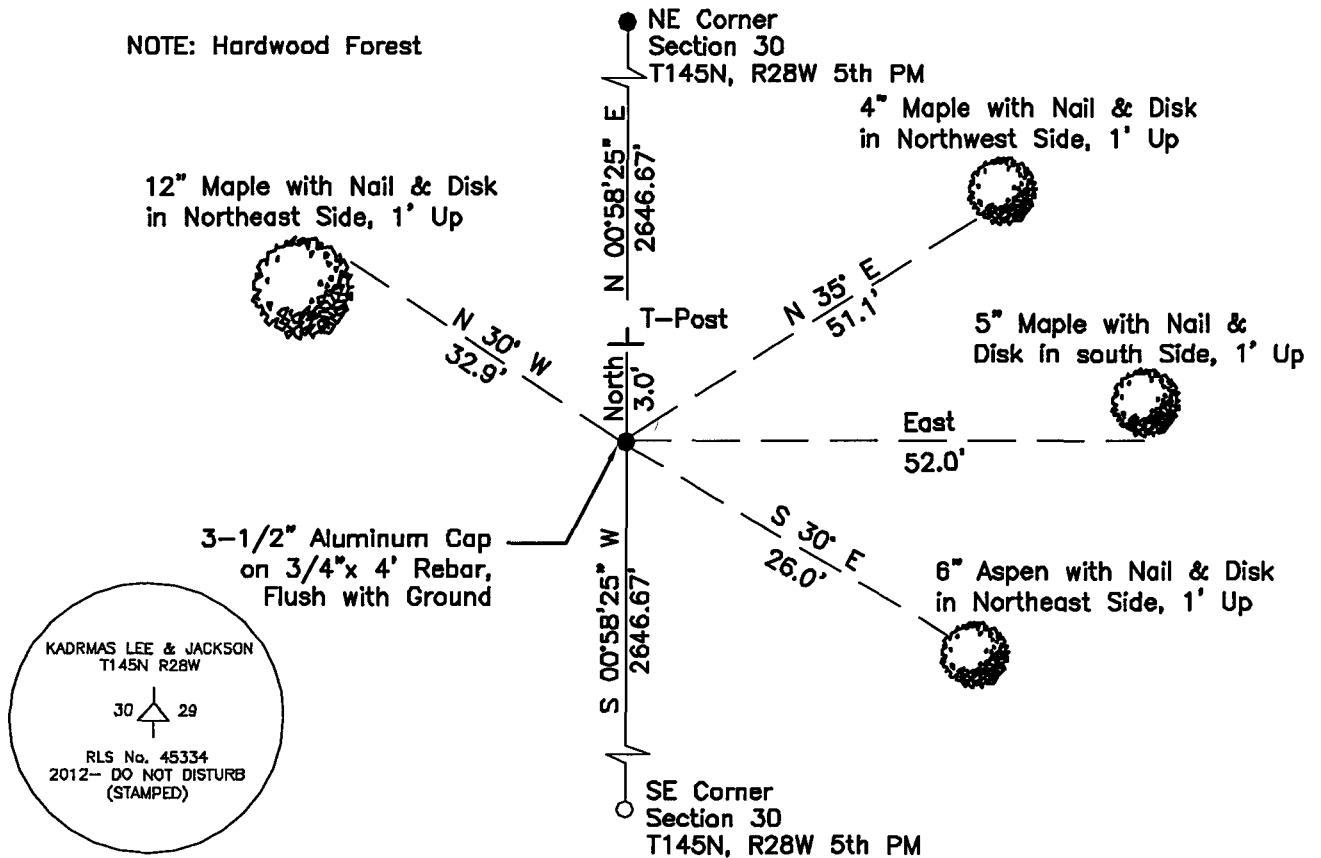
- left monument as found
- lowered monument
- removed monument (explain)
- raised monument

On 03/14/2012, set a(n): 3-1/2" Aluminum Cap on 3/4"x 4' Rebar. Flush with Ground

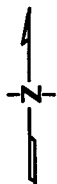
See "Statement of Evidence" for further details (on back)

(reserved for recording data)

NOTE: Hardwood Forest



"SKETCH OF REFERENCE TIES" (not to scale - bearings are magnetic)



Ties are measured to center of monument unless otherwise noted.

UNITS = Metric English

UTM COORDINATES, ZONE 15

Northing: 17206219.270

Easting: 1326274.985

NAD 83/1996 Adjustment.

Obtained by RTK GPS observations.

I hereby certify that this survey, plan, or report was prepared by me or under my direct supervision, and that I am a duly Licensed Land Surveyor under the laws of the State of Minnesota.

Ross Wamre
signature

6/24/12
date

Ross Wamre, Minnesota License No. 45334



STATEMENT OF EVIDENCE: Quarter Corner common to Sections 29 and 30 of Township 145 North, Range 28 West of the 5th Principal Meridian.

1873; This corner was originally established by P. H. Conger, his field notes indicate that this corner was marked by a post and witnessed by:

J. Pine 6" dia. North 74^o West, 18 Links

J. Pine 6" dia. South 03^o East, 19 Links

1967; James Ebstrom for USFS chained to this location from F.S. Brass Cap at Section Corner for 19-20-29-30 and found no evidence of the original post or original BT's. According to USFS Book 1 of Township 145 North, Range 30 West, page 17.

1968; USFS Land Corner Record for the Chippewa National Forest, on file at the USFS office in Cass Lake, MN, show Morrison and Morgan, USFS, found no original survey evidence and set a tag on the West side of a 4" Maple approximate corner lies 6' East of tag with blue lines painted East and South. The approximate corner was established by compass and chaining from the approximate corner ¼ mile East.

2010; A Kadrmas, Lee & Jackson survey crew found no evidence of the original survey or of the tag set by Morrison and Morgan.

2012; Ross Wamre, RLS #45334, set a 3.5" stamped Aluminum Cap on ¾" x 4' rebar, flush at a lost single proportionate measured location. Witnesses found and established as shown on the front of this certificate.

Contacts pertaining to this corner are as follows:

Cass County Recorder's Office

Cass County Engineers Office

Cass County Surveyors Office

Northern Engineering and Consulting Inc.

United States Forest Service

MnDOT – District Office 2

Bureau of Indians Affairs – Bemidji

Bureau of Land Management's (BLM) Northeastern States Field Office