

CERTIFICATE OF LOCATION OF GOVERNMENT CORNER

North Quarter Corner of Section 28
Township 145 N, Range 28 W, 5th P.M.
STATE OF MINNESOTA, COUNTY OF CASS



A000601871

OFFICE OF THE COUNTY RECORDER
CASS COUNTY, MINNESOTA
CERTIFIED, FILED, AND/OR
RECORDED ON

4/24/2014 11:39:27 AM

AS DOC #: A000601871

PAGES: 2

REC FEES: 0.00

KATHRYN M. NORBY
CASS COUNTY RECORDER

BY SR Dep

On _____, found a(n): _____
DATE

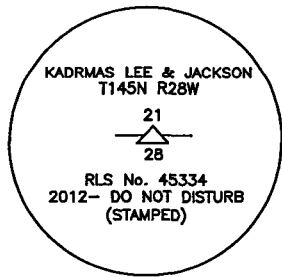
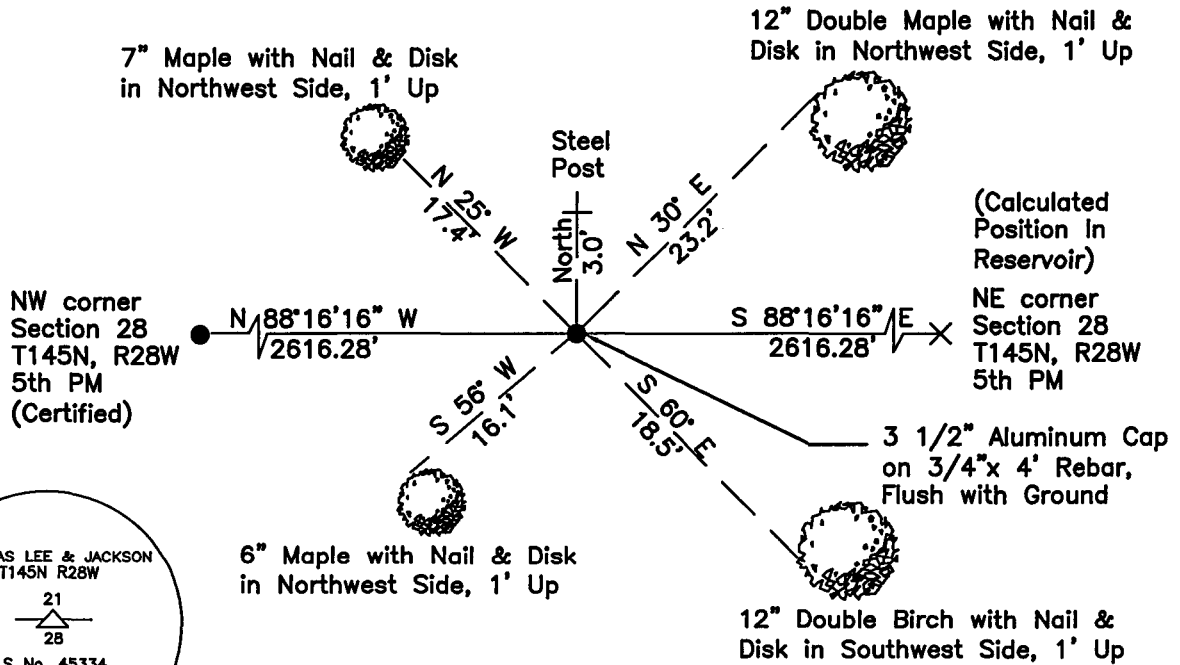
- left monument as found
- lowered monument
- removed monument (explain)
- raised monument

On 03/14/2012, set a(n): 3 1/2" Aluminum Cap on 3/4"x 4' Rebar. Flush with Surface
DATE

See "Statement of Evidence" for further details (on back)

(reserved for recording data)

NOTE: Hardwood Forest



"SKETCH OF REFERENCE TIES"
(not to scale - bearings are magnetic)

Ties are measured to center of monument unless otherwise noted.

UNITS = Metric English

UTM COORDINATES, ZONE 15

Northing: 17208914.520

Easting: 1334214.637

NAD 83/1996 Adjustment.
Obtained by RTK GPS observations.

I hereby certify that this survey, plan, or report was prepared by me or under my direct supervision, and that I am a duly Licensed Land Surveyor under the laws of the State of Minnesota.

Ross Wamre
signature

6/24/13
date

Ross Wamre, Minnesota License No. 45334

Page 1 of 2 A000601871



STATEMENT OF EVIDENCE: Quarter Corner common to Sections 21 and 28 of Township 145 North, Range 28 West of the 5th Principal Meridian.

1873; This corner was originally established by P. H. Conger, his field notes indicate that this corner was marked by a post and witnessed by:

Jack Pine 6" North 27 1/2^o West, 22 Links
Jack Pine 5" South 31^o East, 82 Links

2010; A Kadrmas, Lee & Jackson survey crew found no evidence of the corner location.

2012; Ross Wamre, RLS #45334, set a 3.5" stamped Aluminum Cap on 3/4" x 4' rebar, flush at a lost proportionate measured location. From the calculated Northeast Corner of Section 28-145-28 as calculated from the Subdivision of Section 27 T. 145 N. R. 28 W. by J.A. Gjelhaug and the Northwest Corner of Section 28-145-28. Witnessed found and established as shown on the front of this certificate.

Contacts pertaining to this corner are as follows:

Cass County Recorder's Office

Cass County Engineers Office

Cass County Surveyors Office

Northern Engineering and Consulting Inc.

United States Forest Service

MnDOT – District Office 2

Bureau of Indians Affairs – Bemidji

Bureau of Land Management's (BLM) Northeastern States Field Office