



A000601865

OFFICE OF THE COUNTY RECORDER
CASS COUNTY, MINNESOTA
CERTIFIED, FILED, AND/OR
RECORDED ON

4/24/2014 11:05:09 AM

AS DOC #: A000601865

PAGES: 2

REC FEES: 0.00

KATHRYN M. NORBY
CASS COUNTY RECORDER

BY SR Dep

Page 1 of 2 A000601865

Twp 135 Rge 29 Index No. G.0-05.0

CERTIFICATE OF LOCATION OF GOVERNMENT CORNER

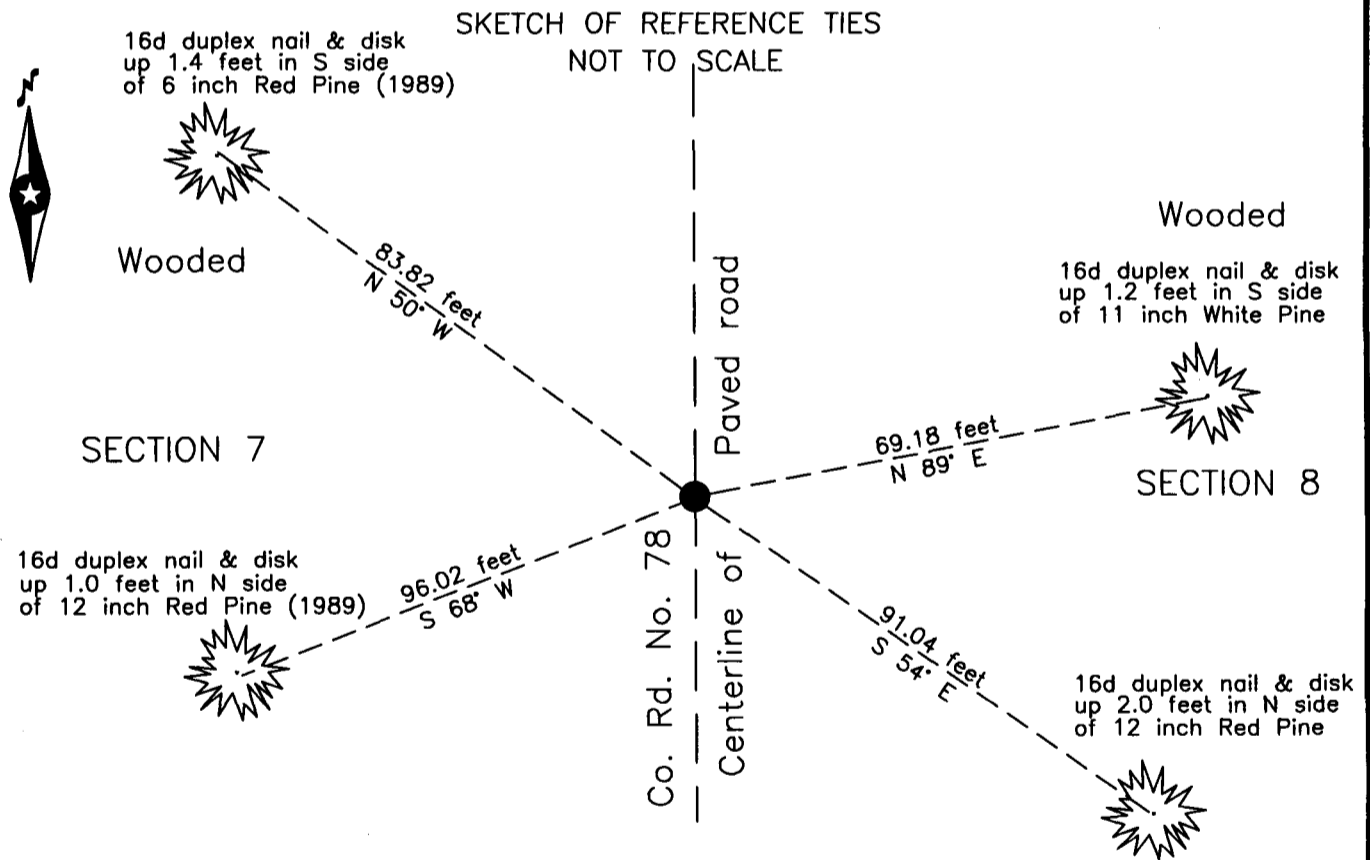
East Quarter of Section 7, Township 135 N., Range 29 W., 5th P.M.
State of Minnesota, County of Cass

At the corner location shown on the sketch:

On 16 Nov 2004 found a 3/8 inch pin, flush, 0.5 foot east of centerline
of County Road Number 78.

left monument as found lowered monument removed monument (explain)

On _____ placed _____



NOTE:
All bearings are true

Statement of evidence relative to this corner location is on the back of this page.

I hereby certify that this survey, plan or report was prepared by me or under my direct supervision and that I am a duly Licensed Land Surveyor under the laws of the State of Minnesota.

Terry L. Freeman, Cass County Surveyor
Date 4/23/14 MN License No. 21367



Statement of Evidence

East Quarter corner of Section 7, Township 135 North, Range 29 West, 5th Principal Meridian.

June 1865 G.B. Wright, GLO Deputy Surveyor in the notes of the subdivision of Township 135 North, Range 29 West, set a post for the original corner and referenced it as follows:

10" N. Pine N 76° E 41 links(27.06 feet) 24" N. Pine N 86° W 66 links(43.56 feet)

The above record is on file with the Minnesota Historical Society in St. Paul, Minnesota, copies are filed with the Cass County Highway Department, Surveyor's Office (CCHD/SO).

Oct. 1903 W.H. Hallett, Township Road Order, in Township Road file, in Home Brook Township, on file in the CCHD/SO shows a survey of a North to South road on the East line of Sections 6, 7, 18 and 19.

Nov. 1986 D. Landecker, LS 17008, Certificate of Survey, file 8545-1, on file in the Pequot Lakes office and a copy on file in CCHD/SO, indicates a position for this corner midway and on line between the NW and SW corner of Section 8.

July 1989 L. Mengis and R. Brueland, technicians, Cass County Highway Department (CCHD), notes of S.A.P. 11-678-01 on file in the CCHD, states 2" I.P. 0.15' E. of line at station 104+74.6 and list the following witnesses:

5" N. Pine NW 83.8 feet 14" Pop West 73.9 feet
14" N. Pine SW 95.8 feet

July 1992 L. Mengis and R. Brueland, technicians, CCHD, notes of S.A.P. 11-678-01 on file in the CCHD, set 1/2" Rod at station 104+74.6 from witness trees.

Aug. 2003 P.J. Axness, Minnesota Department of Natural Resources (DNR), file FMA00508.00.00.01, notes state, found P.K. 1.5' W of centerline N-S County Rd, 50', more or less, S of trail to West and references as follows:

12" W. Pine N 85° E 72.20 feet 14" N. Pine S 60° W 92.47 feet
10" N. Pine S 65° E 92.16 feet 16" N. Pine N 60° W 84.78 feet

Nov. 2004 B. Hippen and R. Brueland, technicians, records of the CCHD/SO, found a 3/8" pin, flush, 0.5 east of centerline of County Road Number 78. This pin is N 27° E 4.91 feet from the PK found by the DNR. The DNR witness are as follows:

6" N. Pine(1989) N 50° W 83.82 feet 11" W. Pine N 89° E 69.18 feet
12" N. Pine(1989) S 68° W 96.02 feet 12" N. Pine S 54° E 91.04 feet

April 2014 B.Hippen, technician, records of the CCHD/SO, found the monument and witnesses from 2004. The monument, recovered and established references for the position are shown on the face of this

Analysis of the recovered record data, field evidence and survey measurements, indicates that the monument recovered by CCHD/SO is the accepted location of this corner.

County Coordinates (Cass County South)

Northing 233289.80

Easting 523770.65