



A000601864

OFFICE OF THE COUNTY RECORDER  
CASS COUNTY, MINNESOTA  
CERTIFIED, FILED, AND/OR  
RECORDED ON

4/24/2014 11:05:08 AM

AS DOC #: A000601864

PAGES: 2

REC FEES: 0.00

KATHRYN M. NORBY  
CASS COUNTY RECORDER

BY SR Dep

Page 1 of 2 A000601864

Twp 135 Rge 29 Index No. E.0-05.0

### CERTIFICATE OF LOCATION OF GOVERNMENT CORNER

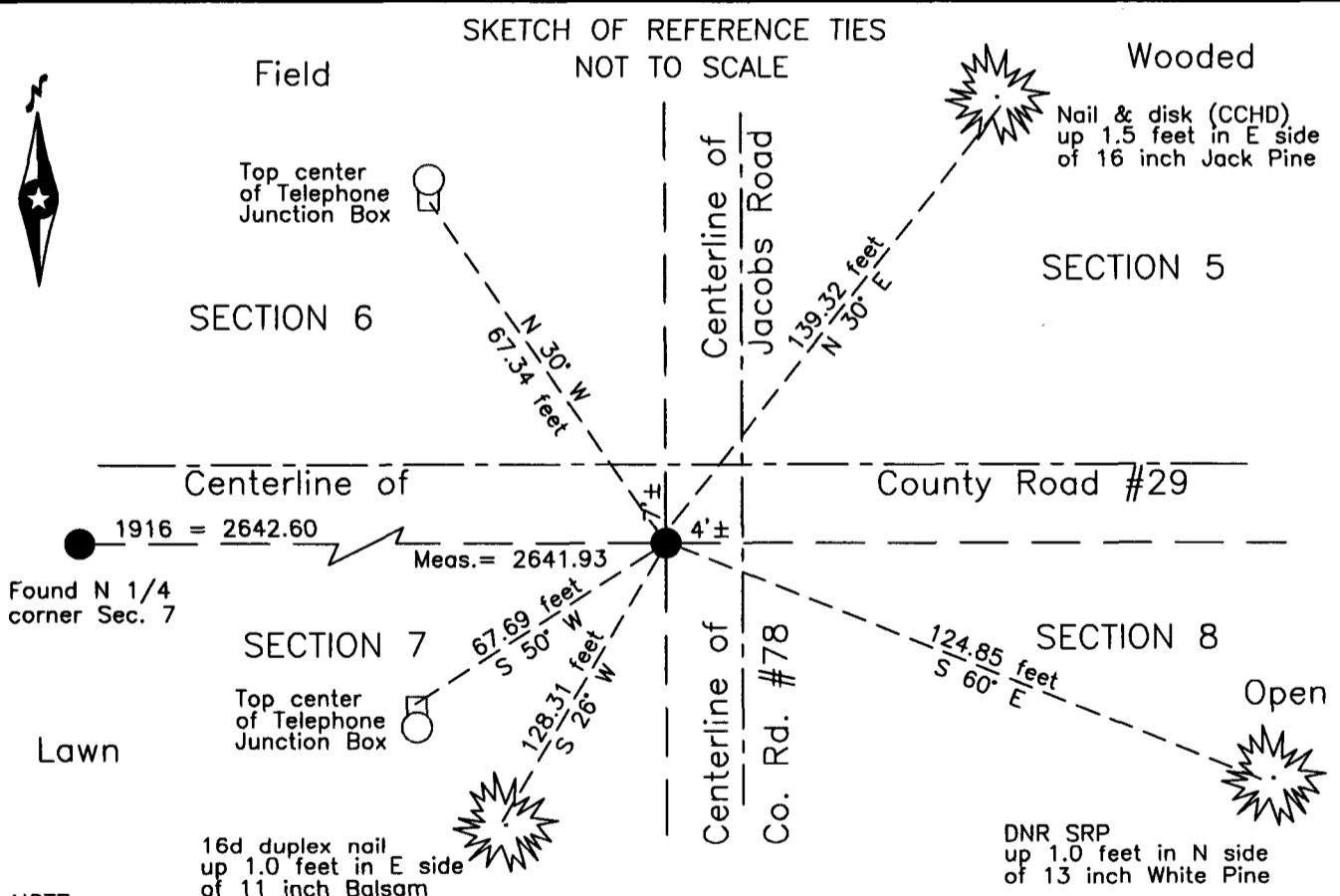
Northeast corner of Section 7, Township 135 N., Range 29 W., 5th P.M.  
State of Minnesota, County of Cass

At the corner location shown on the sketch:

On 7 June 2000 found a 2 inch outside diameter iron pipe with plumbers cap,  
flush, 4 feet± West and 7 feet South of centerlines of County Roads #78 and #29.

left monument as found     lowered monument     removed monument (explain)


On \_\_\_\_\_ placed \_\_\_\_\_



NOTE:  
All bearings are true

Statement of evidence relative to this corner location is on the back of this page.

I hereby certify that this survey, plan or report was prepared by me or under my direct supervision and that I am a duly Licensed Land Surveyor under the laws of the State of Minnesota.

  
Terry L. Freeman, Cass County Surveyor  
Date 4/23/14 MN License No. 21367



Statement of Evidence

Northeast corner of Section 7, Township 135 North, Range 29 West, 5th Principal Meridian.

June 1865 G.B. Wright, GLO Deputy Surveyor in the notes of the subdivision of Township 135 North, Range 29 West, set a post for the original corner and referenced it as follows:
6" Aspen S 45 1/2° W 289 links (190.74 feet) 8" Blk. Pine N 61° W 359 links (236.94 feet)
The above record is on file with the Minnesota Historical Society in St. Paul, Minnesota, copies are filed with the Cass County Highway Department, Surveyor's Office (CCHD/SO).

Nov. 1916 E.B. Horst, LS 376, Deputy County Surveyor, Survey Record No. 315, Book B, page 373 and Curo Book 56, pages 31 and 34, microfilm Roll 10, on file in the CCHD/SO, states "working for Homebrook Township"...."purpose of which is to straighten an old road upon petition for same"....."We find the NW bearing tree broken off at the stump lying on the ground and bearing all the scribe marks plainly. We also find the stump of the poplar but burned off at the ground, but checks for course and distance with the NW tree and from these two I set a 2 x 48 inch iron monument being a boiler-tube at point for the true cor to secs 5, 6, 7, 8". The following new witnesses are listed:

Table with 6 columns: Witness, Bearing, Distance, Witness, Bearing, Distance. Includes 12" J. Pine, J. Pine stump, 12" J. Pine, 10" J. Pine with bearings and distances.

May 1917 J.W. Curo, LS 1428, Curo Book 56, page 130, on file in the CCHD/SO, states "4-5-8-9 T 135 Rg 29 We walk to the iron monument a mile West and chain the U.S. mile East".

Aug. 1928 J.W. Curo, LS 1428, Curo Book 216, page 132, on file in the CCHD/SO, states "We dig for stone or Iron in CL of good graded road E-W-S- but find none. We find old scribed trees NE NW SE Set probably by old Surveyor W.H. Hallett but he is probably dead and his notes lost." On page 133 Curo states "NW Cor Iron Standard at NW Cor Cement Bridge road."

April 1939 J.W. Curo, LS 1428, Curo Book 244, page 19, on file in the CCHD/SO, states "2642.6 = I.M. 5-6-7-8" and lists the following from "old notes:

Table with 6 columns: Witness, Bearing, Distance, Witness, Bearing, Distance. Includes 12" J. Pine, 10" J. Pine with bearings and distances.

1971 L. Mengis, technician, Cass County Highway Department (CCHD), notes of S.A.P.11-629-05 on file in the CCHD, states Sec.Cor Inpl. 2" Capped I.P. 4.0 feet west and 7.7 feet south of road intersection.

1982 T. Freeman, technician and D.Marcum, forester, Cass County Land Corner Record, on file in the CCHD/SO, indicates a found 2" iron with cap, 8 feet more or less, SW of road intersection.

April 1982 Landecker and Associates, Inc. (LAI), sketch of field notes, on file in the CCSO, indicates Ex Iron Centerline Centerline and 1916 ties.

Nov. 1986 D. Landecker, LS 17008, Certificate of Survey, copy on file in CCHD/SO, indicates a monument found.

July 1999 D. Landecker, LS 17008, Certificate of Survey, copy on file in CCHD/SO, indicates a monument found.

June 2000 B. Hippen and C. Loe, technicians, records of the CCSHD/O, found a 2" iron pipe, flush, 4', more or less, west and 7', more or less, south of centerline-centerline and witnessed as follows:

Table with 6 columns: Witness, Bearing, Distance, Witness, Bearing, Distance. Includes 10" Red Oak, 11" Balsam, 13" White Pine, Power Pole with bearings and distances.

In August 2000 a Mag nail was set from these witnesses after the overlay of CSAH No. 29.

Jan. 2002 D. Landecker, LS 17008, Certificate of Survey, a copy on file in CCHD/SO, indicates a monument found.

June 2003 P.J. Axness, Minnesota Department of Natural Resources (DNR), file FMA00508.00.00.01, indicates they found a domed capped monument 7.7' south of E-W centerline, 4' west of N-S centerline and lists references as follows:

Table with 6 columns: Witness, Bearing, Distance, Witness, Bearing, Distance. Includes 16" J. Pine, 13" White Pine, Telephone Box with bearings and distances.

April 2014 B.Hippen, technician, records of the CCHD/SO, found the monument and witnesses from 2003. The monument, recovered and established references for the position are shown on the face of this

Analysis of the recovered record data, field evidence and survey measurements, indicates that the monument recovered by CCHD/SO in 2000 is the accepted location of this corner.

County Coordinates (Cass County South)

Northing 235940.76
Easting 523767.35