

CERTIFICATE OF LOCATION OF GOVERNMENT CORNER

East Quarter Corner of Section 24
Township 145 N, Range 30 W, 5th P.M.
STATE OF MINNESOTA, COUNTY OF CASS



A000601404

OFFICE OF THE COUNTY RECORDER
CASS COUNTY, MINNESOTA
CERTIFIED, FILED, AND/OR
RECORDED ON

4/3/2014 11:30:15 AM

AS DOC #: A000601404

PAGES: 3

REC FEES: 0.00

KATHRYN M. NORBY
CASS COUNTY RECORDER

BY SR Dep

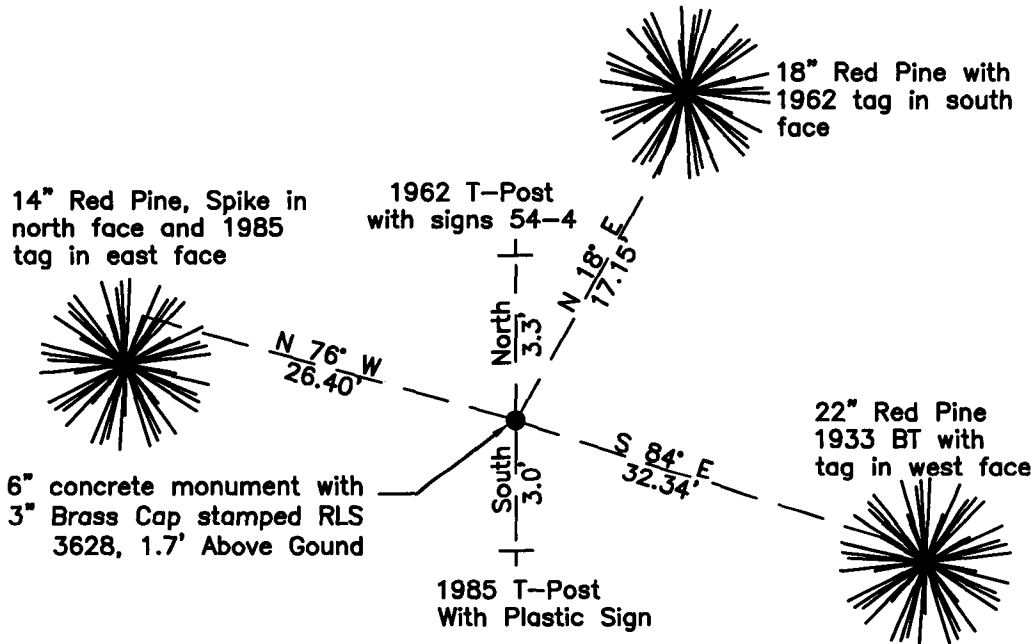
On 04/27/2010, found a(n): 6" concrete monument with a 3" Brass Cap stamped RLS 3628, 1.7' Above Ground

- left monument as found
- lowered monument
- removed monument (explain)
- raised monument

On _____, set a(n): _____

See "Statement of Evidence" for further details (on back)

(reserved for recording data)



24 | 19

"SKETCH OF REFERENCE TIES" (not to scale - bearings are magnetic)

Ties are measured to center of monument unless otherwise noted.

UNITS = Metric English

UTM COORDINATES, ZONE 15

Northing: 17211734.260

Easting: 1289529.124

NAD 83/1996 Adjustment.

Obtained by RTK GPS observations.

I hereby certify that this survey, plan, or report was prepared by me or under my direct supervision, and that I am a duly Licensed Land Surveyor under the laws of the State of Minnesota.

Ross Wamre
signature

7/8/13
date

Ross Wamre, Minnesota License No. 45334

Page 1 of 3
A000601404



STATEMENT OF EVIDENCE: Quarter Corner common to Section 24 of Township 145 North,
Range 30 West and Section 19 of Township 145 North,
Range 29 West of the 5th Principal Meridian

1874; This corner was originally established by P.H. Conger for the GLO. His field notes indicate a wood post set at this corner position, witnessed by:

Norway Pine 6" East, 5 links
Norway Pine 6" North 88° East, 7 links

1900; U.S. Army Corps of Engineers recovered this corner according to Township 145 N Range 28 W flowage map for the Lake Winnibigoshish Reservoir. Map is on file at the USFS office in Cass Lake, MN.

1933; Resurvey by GLO, Willis W. Bandy, found no evidence of post or bearing trees. Set by lost proportionate methods, an iron post, 3' long, 1" diameter, 28" in the ground with a stamped brass cap, witnessed by:

Norway Pine 6" South 88° East, 49 links - mkd ¼ S19 BT
Norway Pine 7" North 68 ¾° West, 26 links - mkd ¼ S24 BT

Corner falls on South edge of a logging road bearing NE and SW.

1936; Lloyd Folson, USFS, 874 forms, found a metal pipe in place in good condition 5" above ground. Information on file with the USFS office in Cass Lake.

1962; R.H. McDonald, USFS Book 1 of Township 145 North, Range 30 West, page 10, found no evidence of brass cap. Set, from the 1933 BT's, a 6" diameter, 5' long cylindrical concrete monument capped with a 3" diameter stamped bronze tablet (RLS# 3628). An Affidavit as to Location of Government Corner is filed with the Cass County Office of Register of Deeds. Corner is witnessed by:

Red (Norway) Pine 11" South 84° East, 32.34' - scribed ¼ S19 BT (1933 tie)
Red (Norway) Pine 10" North 65° West, 17.16' - scribe "S BT" visible (1933 tie)

New BT:

Red Pine 7" North 17 ½° East, 17.15' - mkd ¼ S19 BT
72" Steel Post, North, 3.3' with signs 54-2 and 54-4

1985; G.B. from the USFS, USFS Book 1 of Township 145 North, Range 30 West, page 10, found concrete monument set 20" above ground in good condition with previous BT's and witnessed the monument by:

N. Pine 12" North 18° East, 17.15' scribed (1962 tie)
N. Pine 14" South 84° East, 32.34' scribed (1933 tie)
N. Pine 11" North 65° West, 17.16' scribed (1933 tie)

New BT:

N. Pine 7" North 76° West, 26.4' scribed ¼ S 24 BT
6" Plastic Post, South 3' with Sign Facing F.S. Road 2911



2010; A Kadrmas, Lee & Jackson survey crew found a 6" concrete cylinder with 3" brass cap stamped RLS# 3628, 1.7' above ground. Witnesses found and established as shown on the face of this certificate.

2012; Ross Wamre, RLS #45334, after analysis of record and survey information accepts this monument as the correct perpetuation of the corner.

Contacts pertaining to this corner are as follows:

Cass County Recorder's Office

Cass County Engineers Office

Cass County Surveyors Office

Northern Engineering and Consulting Inc.

United States Forest Service

MnDOT – District Office 2

Bureau of Indians Affairs – Bemidji

Bureau of Land Management's (BLM) Northeastern States Field Office