

CERTIFICATE OF LOCATION OF GOVERNMENT CORNER

Northeast Corner of Section 23
Township 145 N , Range 30 W , 5th P.M.
STATE OF MINNESOTA, COUNTY OF CASS



A000601401

OFFICE OF THE COUNTY RECORDER
CASS COUNTY, MINNESOTA
CERTIFIED, FILED, AND/OR
RECORDED ON

4/3/2014 11:30:12 AM

AS DOC #: A000601401

PAGES: 3

REC FEES: 0.00

KATHRYN M. NORBY
CASS COUNTY RECORDER

BY SR _____ Dep

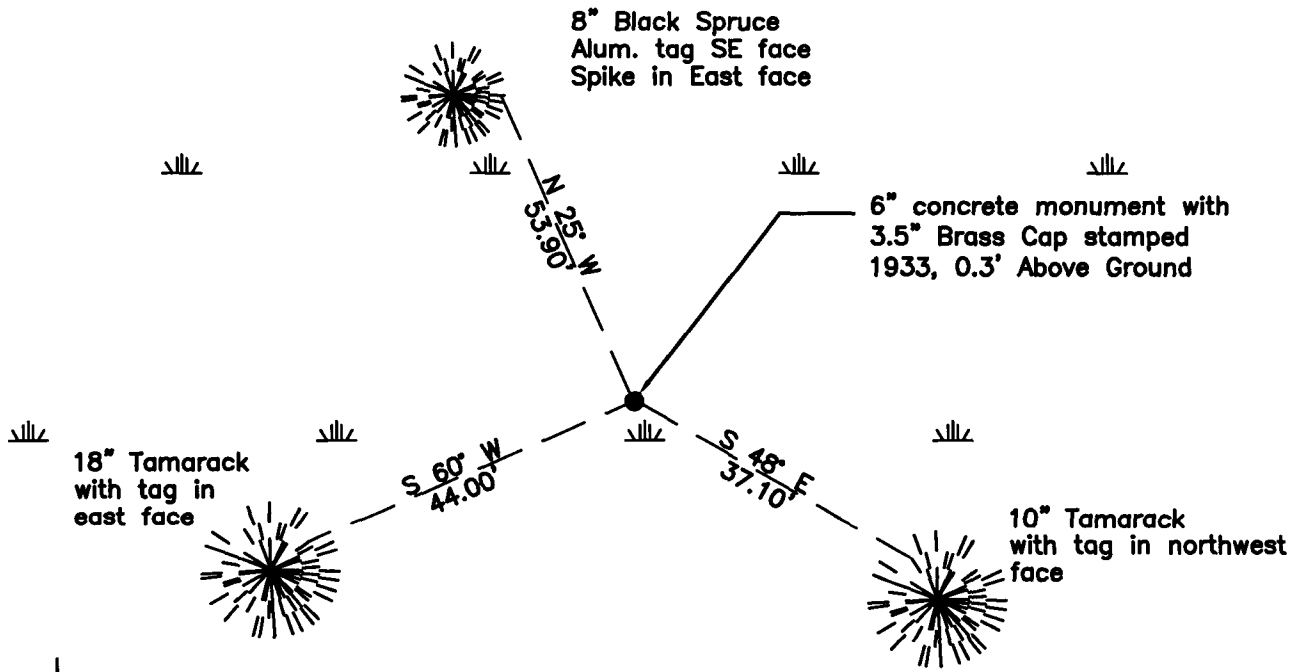
On 04/21/2010, found a(n): 6" concrete monument with a 3.5" Brass Cap stamped 1933, 0.3' Above Ground

- left monument as found
- lowered monument
- removed monument (explain)
- raised monument

On _____, set a(n): _____

See "Statement of Evidence" for further details (on back)

(reserved for recording data)



"SKETCH OF REFERENCE TIES" (not to scale - bearings are magnetic)

Ties are measured to center of monument unless otherwise noted.

UNITS = Metric English

UTM COORDINATES, ZONE 15

Northing: 17214492.590

Easting: 1284396.746

NAD 83/1996 Adjustment.

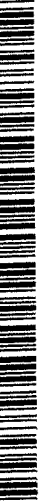
Obtained by RTK GPS observations.

I hereby certify that this survey, plan, or report was prepared by me or under my direct supervision, and that I am a duly Licensed Land Surveyor under the laws of the State of Minnesota.

Ross Wamre
signature

7/8/13
date

Ross Wamre, Minnesota License No. 45334





STATEMENT OF EVIDENCE: Corner common to Sections 13, 14, 23 and 24 of Township 145 North,
Range 30 West of the 5th Principal Meridian

1874; This corner was originally established by P.H. Conger for the GLO. His field notes indicate a wood post set at this corner position, witnessed by:

Tamarack 3" South 80° East, 40 links
Tamarack 4" North 84° West, 64 links
Tamarack 4" North 40° East, 30 links

1915; The GLO supplemental plat showing the subdivisions of lot 4, section 24, T 145 N, R 30 W, 5th P.M. shows a section breakdown for section 24 (NW corner of Sec 24 is the NE of Sec 23)

1916; Railroad Valuation Map 141CS2. Minneapolis St. Paul & Sioux St. Marie Railway Company's Right of Way and Track Map shows an angle and distance tie from the railroad to this corner. Information on file with the Minnesota Department of Transportation.

1928; J.A. Donery, Forest Ranger, USFS 874 forms, found a 5" Tamarack Stake with regular corner markings in a tamarack swamp. Information on file with the USFS office in Cass Lake.

1933; Resurvey by GLO, Willis W. Bandy, found a wooden post, 4" square, 4 ft. above ground. Set brass tablet, 3 1/2" diameter, 3" stem in a cylindrical concrete monument, 2' long, 6" diameter, 20" in the ground. Bearing trees which appear to have been marked by an Indian allotment surveyor about 30 years ago:

Tamarack 5" North 70° East, 35 links - mkd. T145N R30W S13 BT
Tamarack 6" South 62° West, 11 links - mkd. T145N R30W S23 BT
Tamarack 8" North 30 1/4° West, 26 links - mkd. T145N R30W S14 BT

New BT's

Tamarack 6" North 75 3/4° East, 32 links - mkd. T145N R30W S13 BT
Tamarack 6" South 32 3/4° East, 13 links - mkd. T145N R30W S24 BT
Tamarack 5" South 18 1/4° West, 10 links - mkd. T145N R30W S23 BT
Tamarack 6" North 22 1/2° West, 12 links - mkd. T145N R30W S14 BT

The wood post appears to be a perpetuation of the original corner set in connection with Indian allotment surveys made under the direction of the Indian Department about 30 years ago; corner falls at the intersection of the original blazed lines and is accepted as the best available evidence of the original corner.

1936; Harold Hannes, USFS 874 forms, found a Capped Metal Pipe 3" above ground. Information on file with the USFS office in Cass Lake.

1946; State of Minnesota Department of Highways Right-of-Way Index map file 32-86 shows a Brass Cap Set in Concrete in place at this corner location. Information on file with the Minnesota Department of Transportation.

1966; William H. Okerman, RLS #6807 and James Ebstrom, USFS Book 2 of Township 145 North, Range 30 West, page 9, found monument in place under moss and the 1933 BT's as stumps with visible



scribe marks. No bearing trees near. An Affidavit as to Location of Government Corner is on file at the Cass County Office of Register of Deeds. Corner is witnessed by:

Tamarack (decayed stump with scribe) North $75 \frac{3}{4}^{\circ}$ East, 21.12 (1933 tie)

Tamarack (decayed stump with scribe) South $32 \frac{3}{4}^{\circ}$ East, 8.58' (1933 tie)

Tamarack (decayed stump) South $18 \frac{1}{4}^{\circ}$ West, 6.60' (1933 tie)

Tamarack (decayed stump with scribe) North $22 \frac{1}{2}^{\circ}$ West, 7.92' (1933 tie)

New BT's

4"x 4"x 5' Red Top Cedar Post, South 32° West 5.5' with Sign 54-4 attached

4"x 4"x 5' Red Top Cedar Post, South 63° South 6.0'

2010; A Kadrmas, Lee & Jackson survey crew found a 6" concrete monument with a 3.5" brass cap standard GLO monument in place stamped 1933, 0.3' above ground. Witnesses were established as shown on the face of this certificate.

2012; Ross Wamre, RLS #45334, after analysis of record and survey information accepts this monument as the correct perpetuation of the corner.

Contacts pertaining to this corner are as follows:

Cass County Recorder's Office

Cass County Engineers Office

Cass County Surveyors Office

Northern Engineering and Consulting Inc.

United States Forest Service

MnDOT – District Office 2

Bureau of Indians Affairs – Bemidji

Bureau of Land Management's (BLM) Northeastern States Field Office