

# CERTIFICATE OF LOCATION OF GOVERNMENT CORNER.

Northeast Corner of Section 22  
Township 145 N , Range 30 W , 5th P.M.  
STATE OF MINNESOTA, COUNTY OF CASS



**A000601392**

**OFFICE OF THE COUNTY RECORDER  
CASS COUNTY, MINNESOTA  
CERTIFIED, FILED, AND/OR  
RECORDED ON**

**4/3/2014 11:30:03 AM**

**AS DOC #: A000601392**

**PAGES: 2**

**REC FEES: 0.00**

**KATHRYN M. NORBY  
CASS COUNTY RECORDER**

BY SR Dep

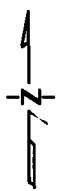
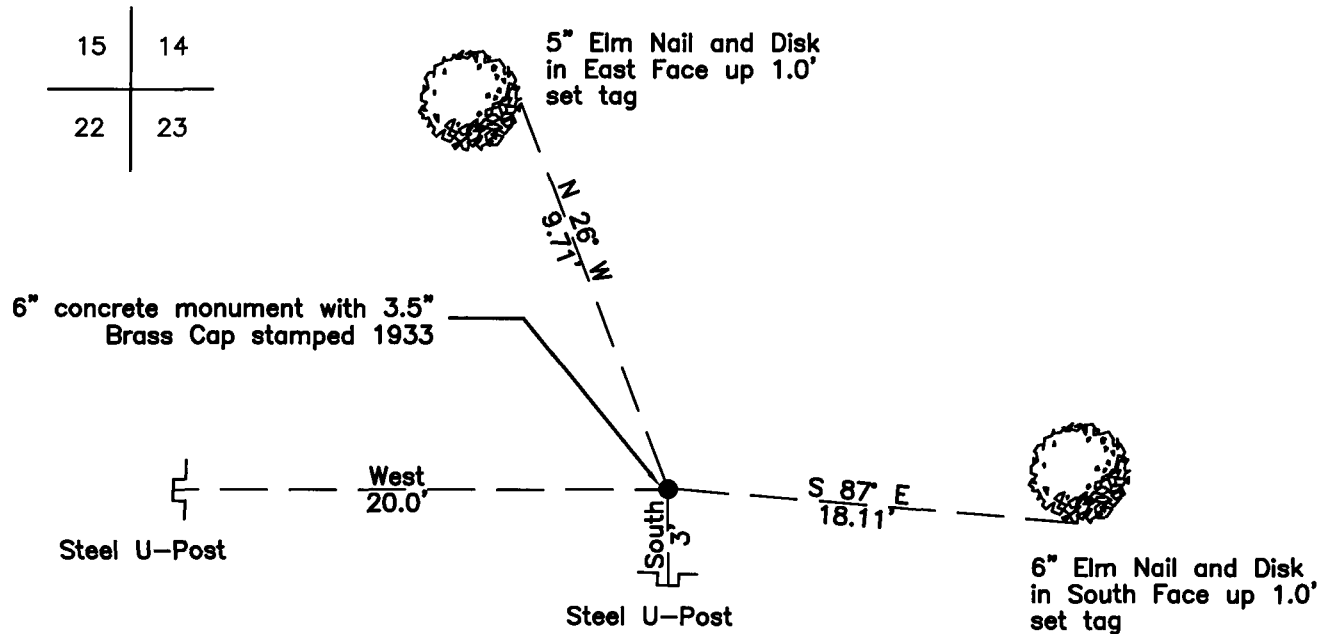
On 04/16/2010, found a(n): 6" concrete monument with 3.5" Brass Cap stamped 1933

- left monument as found
- removed monument (explain)
- lowered monument
- raised monument

On \_\_\_\_\_, set a(n): \_\_\_\_\_

See "Statement of Evidence" for further details (on back)

(reserved for recording data)



### "SKETCH OF REFERENCE TIES" (not to scale - bearings are magnetic)

Ties are measured to center of monument unless otherwise noted.

UNITS =  Metric  English

UTM COORDINATES, ZONE 15

Northing: 17214561.310

Easting: 1279134.050

NAD 83/1996 Adjustment.

Obtained by RTK GPS observations.

I hereby certify that this survey, plan, or report was prepared by me or under my direct supervision, and that I am a duly Licensed Land Surveyor under the laws of the State of Minnesota.

Ross Wamre  
signature

7/8/10  
date

Ross Wamre, Minnesota License No. 45334





**STATEMENT OF EVIDENCE:** Section Corner common to Sections 14, 15, 22 and 23 of Township 145 North, Range 30 West of the 5<sup>th</sup> Principal Meridian

**1874;** This corner was originally established by P.H. Conger for the Government Land Office. His field notes indicate a wood post set at this corner position, witnessed by:

Aspen 4" North 20° East, 30 links  
Aspen 6" South 85° East, 29 links  
Aspen 5" South 3° East, 27 links

**1916;** Minneapolis St. Paul & Sault Ste. Marie Railway Co. Right-of-Way and Track Map 1141CS2 shows an angle and distance tie to this corner. Information is on file with the Minnesota Department of Transportation.

**1926;** USFS 874 form, on file at the USFS office in Cass Lake, MN, show Ware and Taylor, USFS, found a 2" x 2" oak stake 36" above ground

**1933;** Resurvey by GLO, Willis W. Bandy as determined from the remains of the original bearing trees. Set a brass tablet, 3.5" diameter, 3" stem, in a cylindrical concrete monument, 2' long, 6" diameter, 20" in the ground witnessed by

Poplar 16" South 85° East, 29 links (1874 Tie)  
Hollow Poplar Snag 20" South 3° West, 27 links (1874 Tie)  
Rotten Poplar Stump, North 20° East, 30 links (1874 Tie)  
White Pine 8" North 23° East, 107 links mkd. T 145 N R 30 W S 14 BT  
White Pine 24" South 74 ½° East, 144 links mkd. T 145 N R 30 W S 23 BT  
Black Ash 4" South 10 ¼° West, 43 links mkd. T 145 N R 30 W S 22 BT  
Balm of Gilead 4" North 17 ½° West, 39 links mkd. T 145 N R 30 W S 15 BT

**1946;** State of Minnesota Department of Highways Right-of-Way Index Map file 32-86 shows a Brass Cap Set in Concrete in place with an angle and distance tie to U.S. Highway No. 2. Information is on file with the Minnesota Department of Transportation.

**2010;** A Kadrmas, Lee & Jackson survey crew found a 3.5" Brass Cap, stamped, 1933, GLO Monument in a 6" Concrete cylinder, witnesses found & established as shown on the face of this certificate.

**2012;** Ross Wamre, PLS #45334, after analysis of record and survey information accepts this monument as the correct perpetuation of the corner.

Contacts pertaining to this corner are as follows:

Cass County Recorder's Office

Cass County Engineers Office

Cass County Surveyors Office

Northern Engineering and Consulting Inc.

United States Forest Service

MnDOT – District Office 2

Bureau of Indians Affairs – Bemidji

Bureau of Land Management's (BLM) Northeastern States Field Office