

# CERTIFICATE OF LOCATION OF GOVERNMENT CORNER

Northeast Corner of Section 17  
Township 145 N, Range 30 W, 5th P.M.  
STATE OF MINNESOTA, COUNTY OF CASS



**A000601383**

**OFFICE OF THE COUNTY RECORDER  
CASS COUNTY, MINNESOTA  
CERTIFIED, FILED, AND/OR  
RECORDED ON**

**4/3/2014 11:29:54 AM**

**AS DOC #: A000601383**

**PAGES: 2**

**REC FEES: 0.00**

**KATHRYN M. NORBY  
CASS COUNTY RECORDER**

BY SR Dep

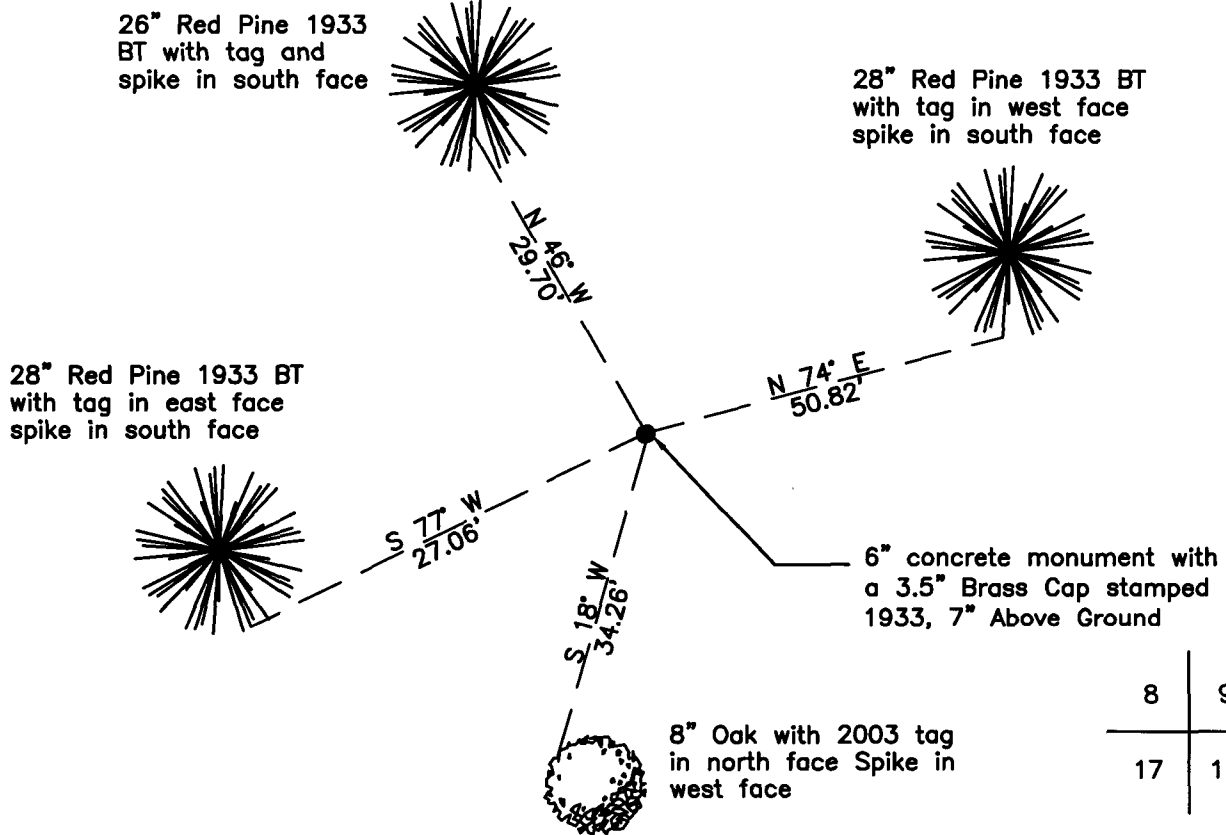
On 04/22/2010, found a(n): 6" concrete monument with a  
DATE  
3.5" Brass cap stamped 1933, 7" Above Ground

- |  |   |
|--|---|
| <input checked="" type="checkbox"/> left monument as found | <input type="checkbox"/> lowered monument |
| <input type="checkbox"/> removed monument (explain)        | <input type="checkbox"/> raised monument  |

On \_\_\_\_\_, set a(n): \_\_\_\_\_  
DATE

See "Statement of Evidence" for further details (on back)

(reserved for recording data)



8	9
17	16

### "SKETCH OF REFERENCE TIES" (not to scale - bearings are magnetic)

Ties are measured to center of monument unless otherwise noted.

UNITS =  Metric  English

UTM COORDINATES, ZONE 15

Northing: 17220162.880

Easting: 1268899.014

NAD 83/1996 Adjustment.

Obtained by RTK GPS observations.

I hereby certify that this survey, plan, or report was prepared by me or under my direct supervision, and that I am a duly Licensed Land Surveyor under the laws of the State of Minnesota.

Ross Wamre  
signature

8/7/13  
date

Ross Wamre, Minnesota License No. 45334





**STATEMENT OF EVIDENCE:** Corner common to Sections 8, 9, 16 and 17 of Township 145 North,  
Range 30 West of the 5<sup>th</sup> Principal Meridian

**1874;** This corner was originally established by P.H. Conger his field notes indicate a wood post set at this corner position, witnessed by:

Birch 3" South 27° East, 40 links  
Birch 5" South 17° West, 65 links  
Birch 4" North 18° East, 80 links

**1931;** Paul Juagroff, Estimator, USFS 874 forms, found rotten squared stick 2 ½ feet above ground. Information on file with the USFS office in Cass Lake.

**1933;** Resurvey by GLO, Willis W. Bandy, USFS Notes Book 2 of Township 145 North, Range 30 West, page 55, *no evidence of post or bearing trees, but found the North, South, East, and West blaze lines.* Corner location determined by the intersection of the original blazed lines bearing. Set a brass tablet, 3 ½" diameter, 3" stem, in a cylindrical concrete monument, 2' long, 6" diameter, 20" in the ground. Witnessed by:

Norway Pine 10" North 74 ¼° East, 77 links - mkd. T145N R30W S9 BT  
Norway Pine 10" South 83 ¼° East, 95 links - mkd. T145N R30W S16 BT  
Norway Pine 14" South 77 ¼° West, 41 links - mkd. T145N R30W S17 BT  
Norway Pine 16" North 46° West, 75 links - mkd. T145N R30W S8 BT

**2003;** Cass County Surveyor's Office recovered the concrete monument with brass tablet and made the following ties:

1933 Norway (red) Pine North 74° East  
1933 Norway (red) Pine South 77° West  
1933 Norway (red) Pine North 46° West  
Oak 6" South 18° West, 34.26'

**2010;** A Kadrmas, Lee & Jackson survey crew found a 6" concrete monument with a 3.5" Brass cap stamped 1933, 7" above ground, witnesses found and established as shown on the face of this certificate.

**2012;** Ross Wamre, PLS #45334, after analysis of record and survey information accepts this monument as the correct perpetuation of the corner.

Contacts pertaining to this corner are as follows:

Cass County Recorder's Office

Cass County Engineers Office

Cass County Surveyors Office

Northern Engineering and Consulting Inc.

United States Forest Service

MnDOT – District Office 2

Bureau of Indians Affairs – Bemidji

Bureau of Land Management's (BLM) Northeastern States Field Office