



A000601380

OFFICE OF THE COUNTY RECORDER
CASS COUNTY, MINNESOTA
CERTIFIED, FILED, AND/OR
RECORDED ON

4/3/2014 11:29:51 AM

AS DOC #: A000601380

PAGES: 2

REC FEES: 0.00

KATHRYN M. NORBY
CASS COUNTY RECORDER

BY SR _____ Dep

Index No. E-15

CERTIFICATE OF LOCATION OF GOVERNMENT CORNER

North Quarter Corner of Section 10
Township 144 N, Range 26 W, 5th P.M.
STATE OF MINNESOTA, COUNTY OF CASS

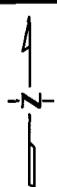
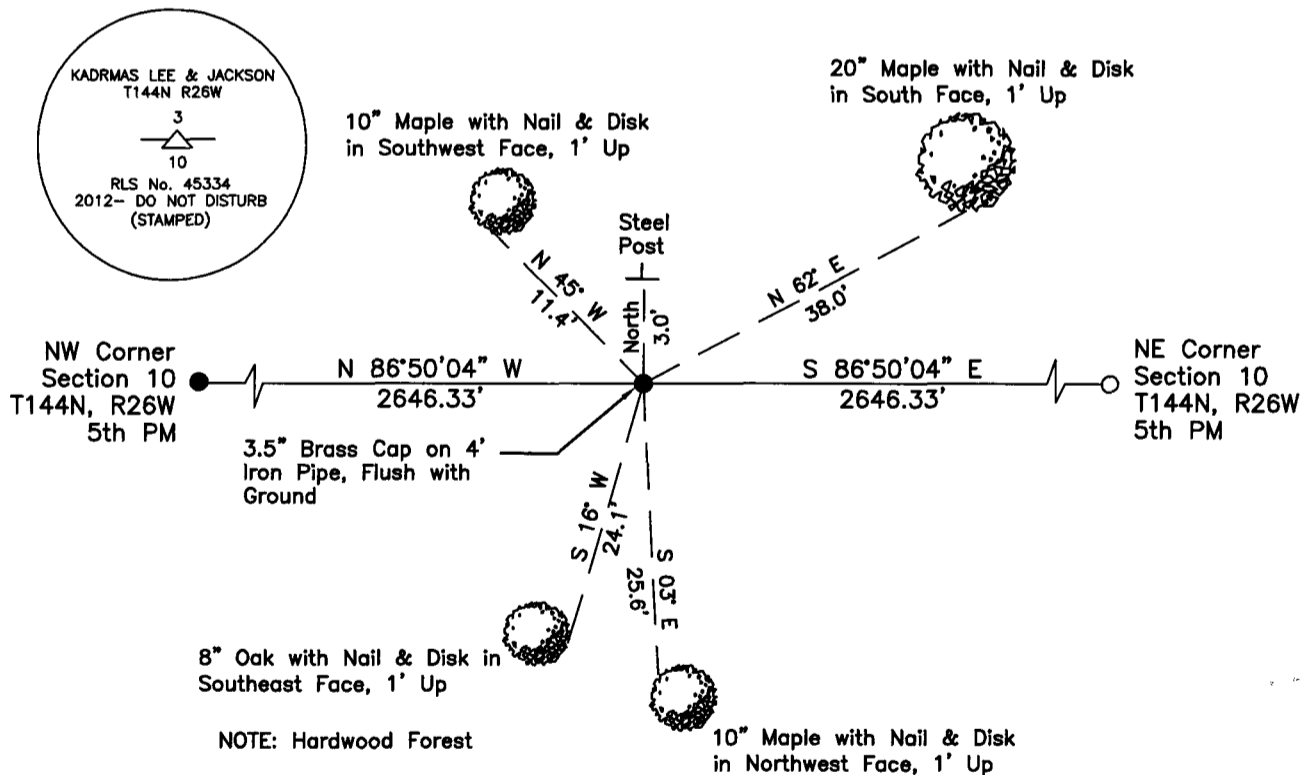
On _____, found a(n): _____
DATE

- left monument as found
- lowered monument
- removed monument (explain)
- raised monument

On 3/7/2012, set a(n): 3.5" Brass Cap on 4' Iron Pipe
DATE
Flush with Ground

See "Statement of Evidence" for further details (on back)

(reserved for recording data)



"SKETCH OF REFERENCE TIES" (not to scale - bearings are magnetic)

Ties are measured to center of monument unless otherwise noted.

UNITS = Metric English

UTM COORDINATES, ZONE 15

Northing: 17192596.470

Easting: 1403481.897

NAD 83/1996 Adjustment.

Obtained by RTK GPS observations.

I hereby certify that this survey, plan, or report was prepared by me or under my direct supervision, and that I am a duly Licensed Land Surveyor under the laws of the State of Minnesota.

Ross Wamre
signature

3/24/14
date

Ross Wamre, Minnesota License No. 45334





STATEMENT OF EVIDENCE: Quarter Corner common to Sections 3 and 10 of Township 144 North, Range 26 West of the 5th Principal Meridian

1876; This corner was originally established by B.C. Baldwin for the Government Land Office. His notes indicate that a post was set at this position and witnessed by:

White Pine 8" South 31° East, 24 Links
Spruce 6" North 31° East, 20 Links

1934; USFS 874 form, on file at the USFS office in Cass Lake, MN, indicates that H.A. Brill, C.C.C. Surveyor, found a slightly rotten squard ash stump 36" above the ground.

N. Pine 12" South 74° East, 74 Links set FSLP on the West Face of tree
F.S. Marker on road 5.24 chains East

1953; Both the USFS 874 form, on file at the USFS office in Cass Lake, MN, and the Resurvey of 1953 notes, USFS notes Book 1 of Township 144 North, Range 26 West, page 42, indicate that R.W. Fassett, USFS, found no conclusive evidence of the original GLO survey. He then set a 4" treated post 42" above the ground scribed "1/4 SC 3/10" witnessed by:

Burr Oak 16" South, 30 Links set FSLP on South Face of tree

1970; USFS notes Book 1 of Township 144 North, Range 26 West, page 42, indicate that Curtis Krause, USFS, searched for the set corner established in 1953 by R.W. Fassett, Krause could not find any sufficient evidence to correctly monument this corner.

2010; A Kadrmas, Lee & Jackson survey crew found no evidence in a search of this corner location.

2012; Ross Wamre, RLS #45334, set a 3.5" stamped Brass Cap on 4' Iron pipe, flush at a lost single proportionate measurement location. As measured from the Northeast & Northwest Corners of Section 10-144-26. Witnesses found and established as shown on the face of this certificate.

Contacts pertaining to this corner are as follows:

Cass County Recorder's Office
Cass County Engineers Office
Cass County Surveyors Office
Northern Engineering and Consulting Inc.
United States Forest Service
MnDOT – District Office 2
Bureau of Indians Affairs – Bemidji
Bureau of Land Management's (BLM) Northeastern States Field Office