



A000601374

OFFICE OF THE COUNTY RECORDER
CASS COUNTY, MINNESOTA
CERTIFIED, FILED, AND/OR
RECORDED ON

4/3/2014 11:29:45 AM

AS DOC #: A000601374

PAGES: 2

REC FEES: 0.00

KATHRYN M. NORBY
CASS COUNTY RECORDER

BY SR Dep

Index No. X-17

CERTIFICATE OF LOCATION OF GOVERNMENT CORNER

East Quarter Corner of Section 34
Township 145 N, Range 27 W, 5th P.M.
STATE OF MINNESOTA, COUNTY OF CASS

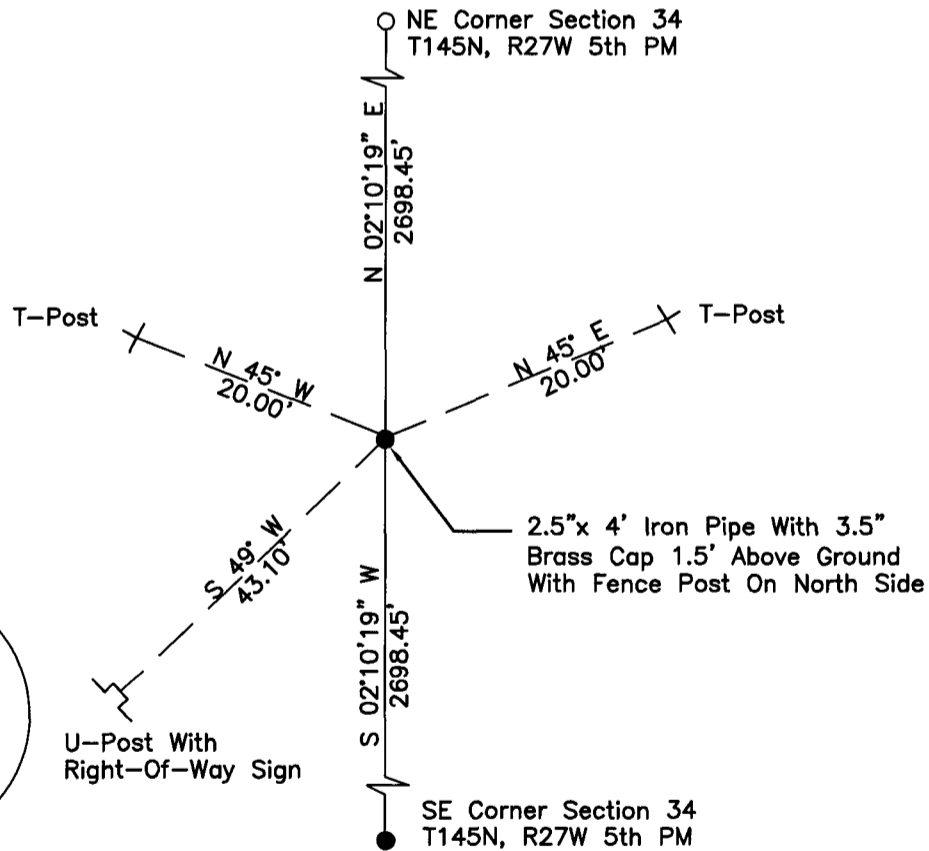
On _____, found a(n): _____
DATE

- left monument as found
- lowered monument
- removed monument (explain)
- raised monument

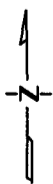
On 7/23/2012, set a(n): 2.5"x 4' Iron Pipe With 3.5"
DATE
Brass Cap 1.5' Above Ground With Fence Post On North Side

See "Statement of Evidence" for further details (on back)

(reserved for recording data)



"SKETCH OF REFERENCE TIES" (not to scale - bearings are magnetic)



Ties are measured to center of monument
unless otherwise noted.

UNITS = Metric English

UTM COORDINATES, ZONE 15

Northing: 17200386.267

Easting: 1374238.305

NAD 83/1996 Adjustment.

Obtained by RTK GPS observations.

I hereby certify that this survey, plan, or report was prepared by me or under my direct supervision, and that I am a duly Licensed Land Surveyor under the laws of the State of Minnesota.

Ross Wamre
signature

3/24/14
date

Ross Wamre, Minnesota License No. 45334

Page 1 of 2
A000601374





STATEMENT OF EVIDENCE: Quarter Corner common to Sections 34 and 35 of Township 145 North,
Range 27 West of the 5th Principal Meridian

1873; This corner was originally established by P.H. Conger for the GLO. His field notes indicate a post was set to mark this corner position which was witnessed by:

Tamarack 6" South 54° East, 10 links

1898; Great Northern Railroad Right-of-Way Plat 1804CS7 shows distance tie to this corner location of 440'. Information is on file with the Minnesota Department of Transportation.

2010; A Kadrmas, Lee & Jackson Survey crew completed a field search for this corner position and found an "approximate" corner tag set by the United States Forest Service in 1965 no record found for this tag.

2012; Ross Wamre, RLS #45334, after analysis of record and survey information set a 2.5" x 4' iron pipe with 3.5" brass cap, 1.5' above ground, at a lost single proportionate measurement location between the reestablished Northeast Corner of Section 34 which was established over the ice in the original survey across Rice Lake and the Southeast Standard Corner of Section 34, this location matches the distance tie on the Great Northern Railroad Right-of-Way Plat within reason. Witnesses found and established as shown on the face of this certificate.

Contacts pertaining to this corner are as follows:

Cass County Recorder's Office
Cass County Engineers Office
Cass County Surveyors Office
Northern Engineering and Consulting Inc.
United States Forest Service
MnDOT – District Office 2
Bureau of Indians Affairs – Bemidji
Bureau of Land Management's (BLM) Northeastern States Field Office