



A000601371

OFFICE OF THE COUNTY RECORDER  
CASS COUNTY, MINNESOTA  
CERTIFIED, FILED, AND/OR  
RECORDED ON

4/3/2014 11:29:42 AM

AS DOC #: A000601371

PAGES: 2

REC FEES: 0.00

KATHRYN M. NORBY  
CASS COUNTY RECORDER

BY SR Dep

Index No. R-13

# CERTIFICATE OF LOCATION OF GOVERNMENT CORNER

Northeast Corner of Section 28  
Township 145 N, Range 27 W, 5th P.M.  
STATE OF MINNESOTA, COUNTY OF CASS

On 7/26/2011, found a(n): 2.5' long decayed wood stake  
DATE in place

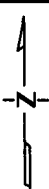
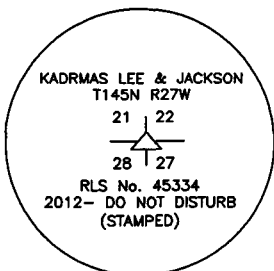
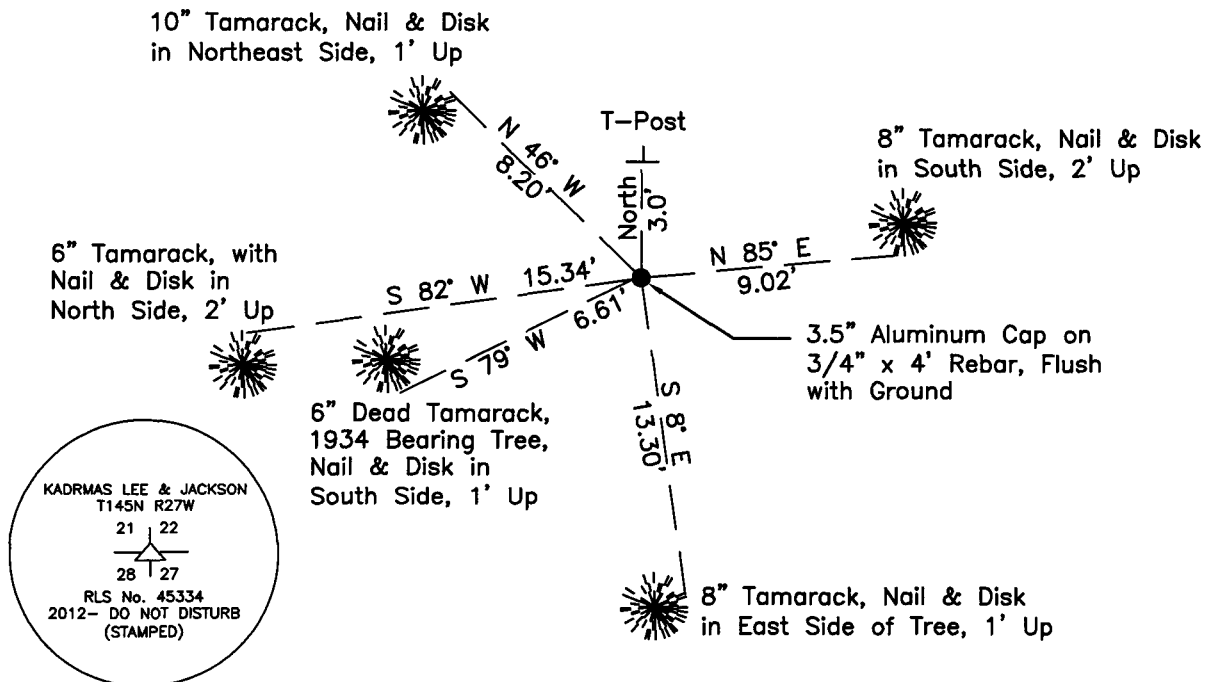
left monument as found       lowered monument  
 removed monument (explain)       raised monument

On 2/27/2012, set a(n): 3.5" Aluminum Cap on 3/4" x 4'  
DATE Rebar. Flush with Ground

See "Statement of Evidence" for further details (on back)

(reserved for recording data)

NOTE: Corner in Tamarack Swamp



## "SKETCH OF REFERENCE TIES" (not to scale - bearings are magnetic)

Ties are measured to center of monument unless otherwise noted.

UNITS =  Metric  English

UTM COORDINATES, ZONE 15

Northing: 17208334.061

Easting: 1369214.492

NAD 83/1996 Adjustment.

Obtained by RTK GPS observations.

I hereby certify that this survey, plan, or report was prepared by me or under my direct supervision, and that I am a duly Licensed Land Surveyor under the laws of the State of Minnesota.

Ross Wamre  
signature

3/24/14  
date

Ross Wamre, Minnesota License No. 45334

Page 1 of 2 A000601371



**STATEMENT OF EVIDENCE:** Corner common to Sections 21, 22, 27 and 28 of Township 145 North,  
Range 27 West of the 5<sup>th</sup> Principal Meridian

**1873;** This corner was originally established by P.H. Conger for the GLO. His field notes indicate a post was set to mark this corner position which was witnessed by:

Tamarack 4" North 27<sup>o</sup> East, 40 links  
Tamarack 3" South 52<sup>o</sup> East, 57 links  
Tamarack 2" South 87<sup>o</sup> West, 80 links  
Tamarack 6" North 4<sup>o</sup> West, 109 links

**1924;** M.J. Cummings, Forest Ranger, 874 forms, Minnesota National Forest, found a Tamarack post 2 ½' above ground witnessed. Information on file with the USFS office in Cass Lake.

4 small tamarack trees set around corner

**1934;** Earl M. Handy, Chief of Party, 874 forms, found a Square Stake in place 4" above the ground witnessed. Information on file with the USFS office in Cass Lake.

F.S.M. on a Larch 4" South 80<sup>o</sup> West, 12 links

**1937;** J.A. Gjelhaug, CCC, LS# 1337, performed the Nushka L.O. tower survey and found the original GLO corner and witnessed. USFS Book 1 of Township 145 North, Range 27 West, page 38.

Tamarack 4" South 31<sup>o</sup> East, 38 links (1873 tie)  
Tamarack 6" North 35<sup>o</sup> East, 44 links  
Tamarack 4" South 54<sup>o</sup> West, 48 links  
Tamarack 6" North 44<sup>o</sup> West, 67 links  
F.S. Poster on Tamarack 4" South 79<sup>o</sup> West, 10 links (1934 tie)

**2011;** A Kadrmas, Lee and Jackson survey crew found a 2.5' long badly decayed pine stake in place, and also the E.M. Handy BT. Witnesses were established as shown on the face of this certificate.

**2012;** Ross Wamre, RLS #45334, after analysis of record and survey information accepts this monument as the correct perpetuation of the corner. To perpetuate this corner a 3.5" Aluminum Cap set on a ¾" Rebar was placed at the recovered location flush.

Contacts pertaining to this corner are as follows:

Cass County Recorder's Office  
Cass County Engineers Office  
Cass County Surveyors Office  
Northern Engineering and Consulting Inc.  
United States Forest Service  
MnDOT – District Office 2  
Bureau of Indians Affairs – Bemidji  
Bureau of Land Management's (BLM) Northeastern States Field Office