

Page 1 of 2 A000601092

Index No. Z-13

CERTIFICATE OF LOCATION OF GOVERNMENT CORNER

Standard Southeast Corner of Section 33
Township 145 N, Range 27 W, 5th P.M.
STATE OF MINNESOTA, COUNTY OF CASS



A000601092

OFFICE OF THE COUNTY RECORDER
CASS COUNTY, MINNESOTA
CERTIFIED, FILED, AND/OR
RECORDED ON

3/20/2014 11:04:06 AM

AS DOC #: A000601092

PAGES: 2

REC FEES: 0.00

KATHRYN M. NORBY
CASS COUNTY RECORDER

BY SR Dep

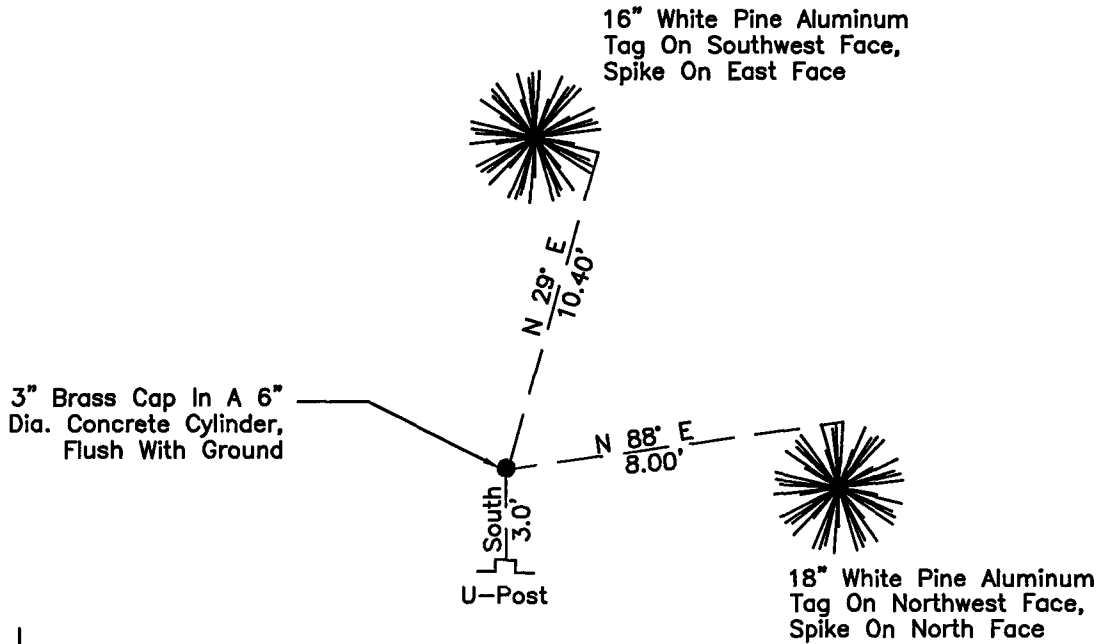
On 06/02/2010, found a(n): 3" Brass Cap In A 6" Dia. Concrete Cylinder. Flush With Ground

- left monument as found
- removed monument (explain)
- lowered monument
- raised monument

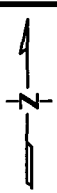
On _____, set a(n): _____

See "Statement of Evidence" for further details (on back)

(reserved for recording data)



33 | 34
SC



"SKETCH OF REFERENCE TIES" (not to scale - bearings are magnetic)

Ties are measured to center of monument unless otherwise noted.

UNITS = Metric English

UTM COORDINATES, ZONE 15

Northing: 17197778.590

Easting: 1368908.345

NAD 83/1996 HARN Adjustment.

I hereby certify that this survey, plan, or report was prepared by me or under my direct supervision, and that I am a duly Licensed Land Surveyor under the laws of the State of Minnesota.

Ross Wamre
signature

6/25/13
date

Ross Wamre, Minnesota License No. 45334



STATEMENT OF EVIDENCE: Standard Southeast Corner common to of Section 33 & 34 Township 145 North, Range 27 West of the 5th Principal Meridian.

1871; This corner was originally established by G.R. Stuntz for the GLO. His field notes indicate this corner position, witnessed by:

Lind 8" dia. North 67° West, 89 Links
Fir 6" dia. North 40° West, 63 Links

1937; GLO dependent resurvey of the Eleventh Standard Parallel North, along the South boundary of Township 145 North, through a portion of Range 26 West and through Range 27 West, 5th Principal Meridian. Hal D. Craig found no remaining evidence of the original standard corner reestablished this corner's position by proportionate distance and set a concrete monument 2 ft. long, 6" dia., 20" in the ground with a 3 ½" brass cap marked SC T145N R2 W S33 S34 1937 and witnessed. Information on file with Cass County Surveyor's Office.

White Pine 8" dia. North 19° East, 24 Links, marked SC T145N R27W S34 BT
White Pine 11" dia. North 23° West, 27 Links, marked SC T145N R27W S33 BT

1962; Morrison & Tucker, USFS personnel, Book 1 of Township 145 North, Range 27 West, page 71 states corner visited, no ties or witnesses were established. Information on file with the USFS office in Cass Lake.

2010; A Kadrmas, Lee, & Jackson survey crew found the 1937 GLO 3 ½" brass cap in a 6" concrete cylinder flush with ground. Witnesses established as shown on the face of this certificate.

2012; Ross Wamre, RLS #45334, after analysis of record and survey information accepts this monument as the correct perpetuation of the corner.

Contacts pertaining to this corner are as follows:

Cass County Recorder's Office
Cass County Engineers Office
Cass County Surveyors Office
Northern Engineering and Consulting Inc.
United States Forest Service
MnDOT – District Office 2
Bureau of Indians Affairs – Bemidji
Bureau of Land Management's (BLM) Northeastern States Field Office