

CERTIFICATE OF LOCATION OF GOVERNMENT CORNER

Standard South Quarter Corner of Section 31
Township 145 N , Range 27 W , 5th P.M.
STATE OF MINNESOTA, COUNTY OF CASS



A000601089

OFFICE OF THE COUNTY RECORDER
CASS COUNTY, MINNESOTA
CERTIFIED, FILED, AND/OR
RECORDED ON

3/20/2014 11:04:03 AM

AS DOC #: A000601089

PAGES: 2

REC FEES: 0.00

KATHRYN M. NORBY
CASS COUNTY RECORDER

BY SR Dep

On 05/18/2010, found a(n): 2" Iron Pipe With 3" Brass Cap
DATE
Stamped RLS# 14677 1.8' Above Ground

left monument as found lowered monument
 removed monument (explain) raised monument

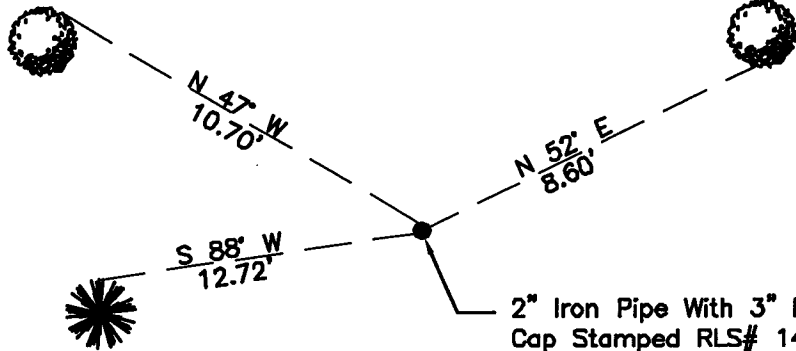
On _____, set a(n): _____
DATE

See "Statement of Evidence" for further details (on back)

(reserved for recording data)

4" Maple
Spike in North Face
Tag in East Face

4" Maple
Spike and Tag in
South Face

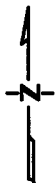


2" Iron Pipe With 3" Brass
Cap Stamped RLS# 14677
1.8' Above Ground

4" Balsam Spike in North
Face, Aluminum Tag in
Northeast Face

31

SC



"SKETCH OF REFERENCE TIES" (not to scale - bearings are magnetic)

Ties are measured to center of monument
unless otherwise noted.

UNITS = Metric English

UTM COORDINATES, ZONE 15

Northing: 17198012.670

Easting: 1355780.501

NAD 83/1996 HARN Adjustment.

I hereby certify that this survey, plan, or report was prepared by me or under my direct supervision, and that I am a duly Licensed Land Surveyor under the laws of the State of Minnesota.

Ross Wamre
signature

6/25/13
date

Ross Wamre, Minnesota License No. 45334

Page 1 of 2 A000601089



STATEMENT OF EVIDENCE: Standard South Quarter Corner to Section 31 Township 145 North, Range 27 West of the 5th Principal Meridian.

1871; G.R. Stuntz, for the Government Land Office established this corner and witnessed by:

- Y. Pine 10" North 42° West, 12 links
- Y. Pine 13" North 78° East, 21 links

1937; GLO dependent resurvey of the Eleventh Standard Parallel North, along the South boundary of Township 145 North, through a portion of Range 26 West and through Range 27 West, 5th Principal Meridian. Hal D. Craig found no remaining evidence of the original standard corner reestablished this corner's position by proportionate distance and set an iron post, 3' long, 1" diameter, 27" in the ground with a stamped brass cap, witnessed. Book 1 of Township 145 North, Range 27 West, page 73.

- Jack Pine 7" North 71 ¼° West, 251 links
- Norway Pine 12" North 43 ¼° West, 244 links

1966; Milton Hansey, USFS, 874 forms, found a pine snag with scribe visible but no monument was recovered. Information on file with the USFS office in Cass Lake.

1981; K. Whitehorn, RLS# 14677, according to document no. 268052, on file with the USFS office in Cass Lake, found Norway pine snag with scribe visible and a badly charred stump with lower part of blaze visible. Also found a GLO brass cap plowed up about 7' from corner position using bearing trees. Since the GLO monument was disturbed Whitehorn proceeded to set a 2"x5' iron pipe with a 3" brass cap at record bearing and distance from 1937 bearing trees, witnessed. Book 1 of Township 145 North, Range 27 West, page 73.

- Jack Pine 9" North 81° West, 21.15'
- Norway Pine 12" North 27° West, 78.63'
- Norway Pine 6" North 27° East, 55.02'
- Jack Pine 7" North 81° East, 15.86'

2010; A Kadrmas, Lee & Jackson survey crew found a 2" Iron Pipe with a 3" Brass cap stamped RLS# 14677 and witnessed no 1981 witnesses recovered. Witnesses were established as shown on the face of this certificate.

2012; Ross Wamre, RLS #45334, after analysis of record and survey information accepts this monument as the correct perpetuation of the corner.

Contacts pertaining to this corner are as follows:

Cass County Recorder's Office
Cass County Surveyors Office
United States Forest Service
MnDOT – District Office 2

Bureau of Indians Affairs – Bemidji

Bureau of Land Management's (BLM) Northeastern States Field Office

Cass County Engineers Office
Northern Engineering and Consulting Inc.