



A000600965

OFFICE OF THE COUNTY RECORDER
CASS COUNTY, MINNESOTA
CERTIFIED, FILED, AND/OR
RECORDED ON

3/13/2014 2:50:12 PM

AS DOC #: A000600965

PAGES: 2

REC FEES: 0.00

KATHRYN M. NORBY
CASS COUNTY RECORDER

BY SR _____ Dep



A000600965

Page 1 of 2

Index No. E-5

CERTIFICATE OF LOCATION OF GOVERNMENT CORNER

Northeast _____ Corner of Section 7
Township 144 N, Range 25 W, 4th P.M.
STATE OF MINNESOTA, COUNTY OF CASS

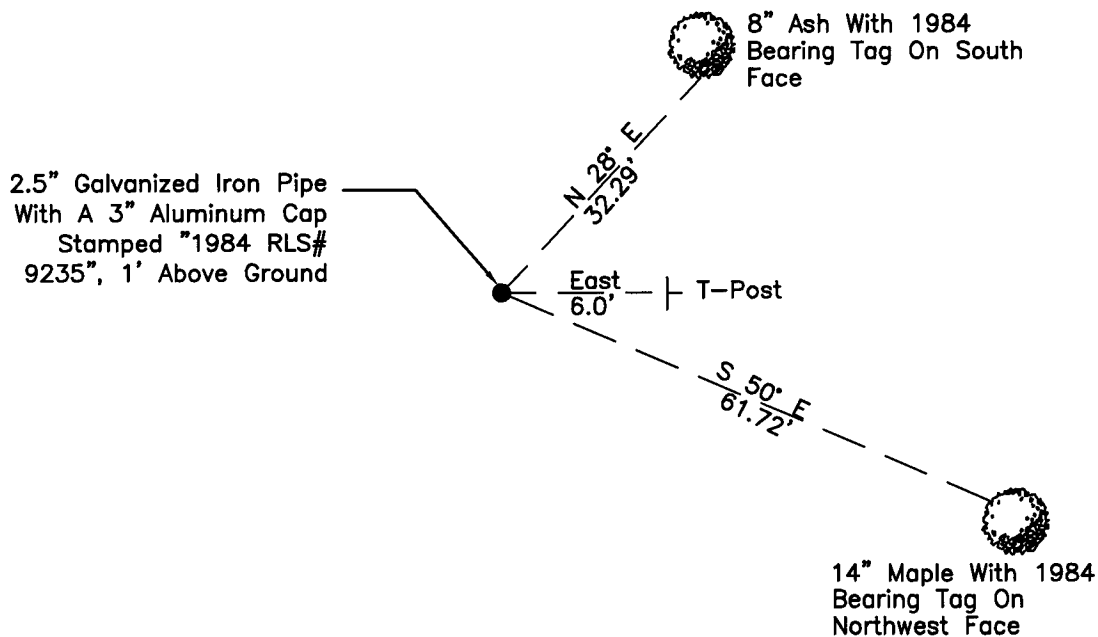
On 12/16/2010, found a(n): 2.5" Galvanized Iron Pipe With
A 3" Aluminum Cap Stamped "1984 RLS# 9235", 1' Above Ground

- left monument as found
- lowered monument
- removed monument (explain)
- raised monument

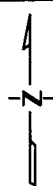
On _____, set a(n): _____

See "Statement of Evidence" for further details (on back)

(reserved for recording data)



"SKETCH OF REFERENCE TIES" (not to scale - bearings are magnetic)



Ties are measured to center of monument
unless otherwise noted.

UNITS = Metric English

UTM COORDINATES, ZONE 15

Northing: 17191140.616

Easting: 1422118.074

NAD 83/1996 Adjustment.

Obtained by RTK GPS observations.

I hereby certify that this survey, plan, or report was prepared by me or under my direct supervision, and that
I am a duly Licensed Land Surveyor under the laws of the State of Minnesota.

Ross Wamre
signature

3/1/14
date

Ross Wamre, Minnesota License No. 45334



STATEMENT OF EVIDENCE: Corner common to Sections 5, 6, 7, and 8 of Township 144 North, Range 25 West of the 5th Principal Meridian.

1876; Benjamin C. Baldwin, for the Government Land Office established this corner and set a post and witnessed by:

Cedar 6" North 68° East, 10 Links
Maple 8" South 28° East, 28 Links
Birch 8" South 64° West, 10 Links
Birch 8" North 27° West, 11 Links

1900; US Army Corps of Engineers show that this corner location was recovered according to the Pokegama Reservoir Map. Map on file with the USFS office.

1984; According to Cass County Certificate of Location of Government Corner Document No. 281668, an Advance Surveying and Engineering Co. survey crew searched for this corner but to no avail. Survey crew did find an old fence corner position and from that position they were able to check feature calls from original government notes. The feature calls fit well with this position.

1984; According to Cass County Certificate of Location of Government Corner Document No. 281668, Advance Surveying and Engineering Co. returned, James H. Parker, RLS # 9235 set a 2-1/2"x 5' long galvanized iron pipe with a 3" aluminum cap stamped "RLS# 9235, 1984" witnessed by:

Blazed Aspen 5" North 25° West, 69.61' set 20d nail, set tag
Blazed Ash 8" North 28° East, 32.29' set 20d nail, set tag
Blazed Maple 8" South 50° East, 61.72' set 20d nail, set tag
Blazed Tamarack 3" South 13° West, 29.38' set 20d nail, set tag

2012; A Kadrmas, Lee & Jackson survey crew found a 2.5" galvanized iron pipe with a 3" aluminum cap stamped "1984 RLS# 9235", 1' above ground, witnesses found and established as shown on the face of this certificate.

2012; Ross Wamre, PLS #45334, after analysis of record and survey information accepts this monument as established by Advance Surveying & Engineering Co. in 1984.

Contacts pertaining to this corner are as follows:

Cass County Recorder's Office
Cass County Engineers Office
Cass County Surveyors Office
Northern Engineering and Consulting Inc.
United States Forest Service
MnDOT – District Office 2
Bureau of Indians Affairs – Bemidji
Bureau of Land Management's (BLM) Northeastern States Field Office