



A000600964

OFFICE OF THE COUNTY RECORDER
CASS COUNTY, MINNESOTA
CERTIFIED, FILED, AND/OR
RECORDED ON

3/13/2014 2:50:11 PM

AS DOC #: A000600964

PAGES: 2

REC FEES: 0.00

KATHRYN M. NORBY
CASS COUNTY RECORDER

BY SR _____ Dep

Page 1 of 2 A000600964

Index No. E-3

CERTIFICATE OF LOCATION OF GOVERNMENT CORNER

North Quarter Corner of Section 7
Township 144 N , Range 25 W , 5th P.M.
STATE OF MINNESOTA, COUNTY OF CASS

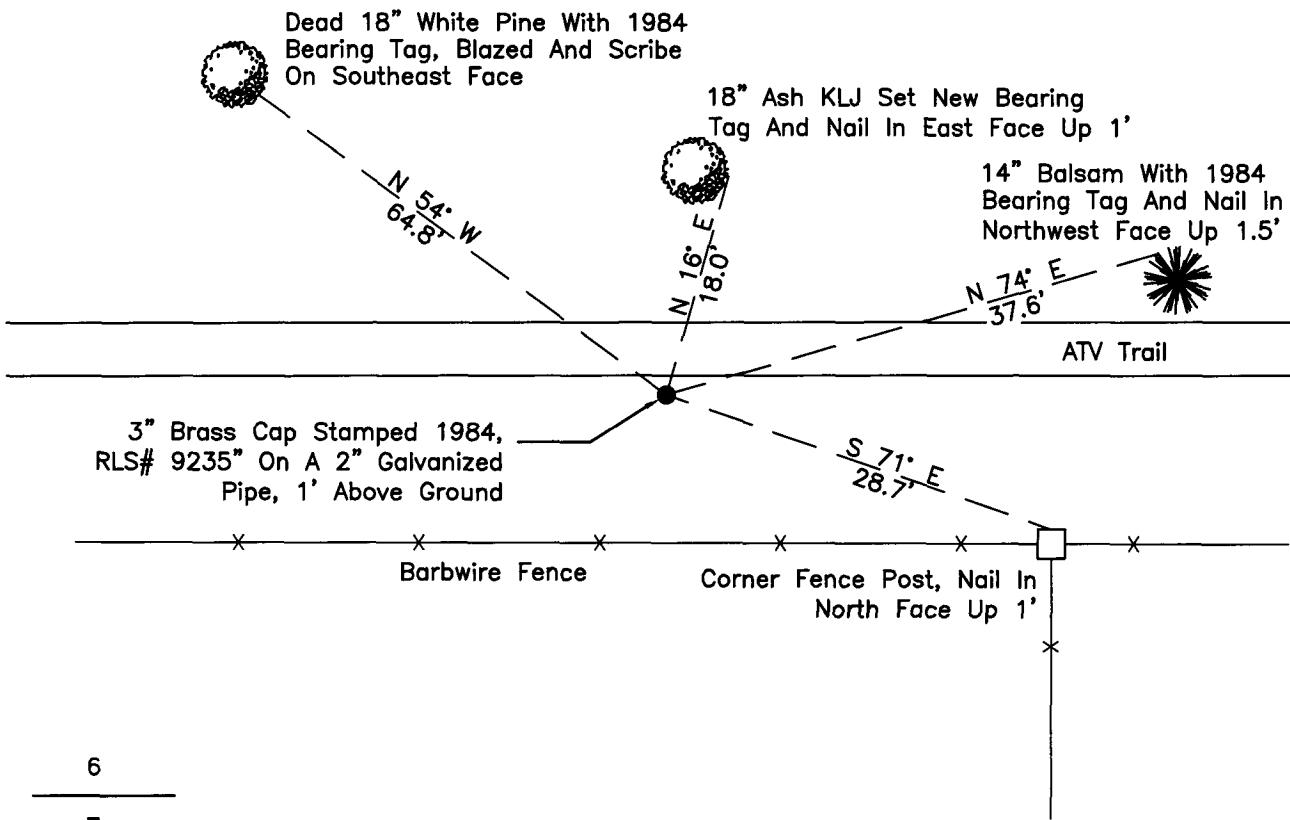
On 12/16/2010, found a(n): 3" Brass Cap Stamped 1984,
DATE RLS# 9235" On A 2" Galvanized Pipe, 1' Above Ground

left monument as found lowered monument
 removed monument (explain) raised monument

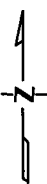
On _____, set a(n): _____
DATE

See "Statement of Evidence" for further details (on back)

(reserved for recording data)



"SKETCH OF REFERENCE TIES" (not to scale - bearings are magnetic)



Ties are measured to center of monument unless otherwise noted.

UNITS = Metric English

UTM COORDINATES, ZONE 15

Northing: 17191484.707

Easting: 1419546.150

NAD 83/1996 Adjustment.

Obtained by RTK GPS observations.

I hereby certify that this survey, plan, or report was prepared by me or under my direct supervision, and that I am a duly Licensed Land Surveyor under the laws of the State of Minnesota.

Ross Wamre
signature

3/1/14
date

Ross Wamre, Minnesota License No. 45334



STATEMENT OF EVIDENCE: Quarter Corner common to Sections 6 and 7 of Township 144 North, Range 25 West of the 5th Principal Meridian.

1876; Benjamin C. Baldwin, for the Government Land Office established this corner and set a post and witnessed by:

Norway Pine 12" South 27° East, 45 Links
Aspen 6" North 25° West, 40 Links

1900; US Army Corps of Engineers show this corner was recovered according to the Pokegama Reservoir Map. Map on file with the USFS office.

1984; According to Cass County Certificate of Location of Government Corner Document No. 281667, an Advance Surveying and Engineering Co. survey crew searched for this corner and references to no avail. They did find an old fence line running to the South on the South side of an old township road.

1984; According to Cass County Certificate of Location of Government Corner Document No. 281667, James H. Parker, RLS # 9235 set a 2 ½" Iron Pipe with a 3" stamped brass cap, 1.4' above the ground. Set with obliterated methods using the river, the fence line and the old road as evidence witnessed by:

Blazed White Pine 10" North 54° West, 64.79' set 20d nail, set tag
Blazed Balsam 9" North 74° East, 37.67' set 20d nail, set tag
Fence Post South ± 10'
Corner is ± 10' south of the Centerline of the Old Township Road

2010; A Kadmas, Lee & Jackson survey crew found a 3" Brass Disc marked 1984 1' above the ground with two BT's, witnesses found and established as shown on the face of this certificate.

2012; Ross Wamre, RLS #45334, after analysis of record and survey information accepts this monument as established by Advance Surveying & Engineering Co. in 1984.

Contacts pertaining to this corner are as follows:

Cass County Recorder's Office
Cass County Engineers Office
Cass County Surveyors Office
Northern Engineering and Consulting Inc.
United States Forest Service
MnDOT – District Office 2
Bureau of Indians Affairs – Bemidji
Bureau of Land Management's (BLM) Northeastern States Field Office