

# CERTIFICATE OF LOCATION OF GOVERNMENT CORNER

North Quarter Corner of Section 33  
Township 145 N, Range 27 W, 5th P.M.  
STATE OF MINNESOTA, COUNTY OF CASS



A000600937

OFFICE OF THE COUNTY RECORDER  
CASS COUNTY, MINNESOTA  
CERTIFIED, FILED, AND/OR  
RECORDED ON

3/13/2014 11:37:40 AM

AS DOC #: A000600937

PAGES: 2

REC FEES: 0.00

KATHRYN M. NORBY  
CASS COUNTY RECORDER

BY SR Dep

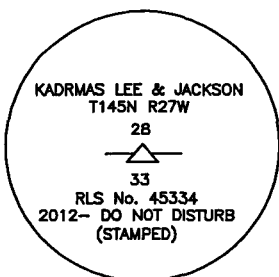
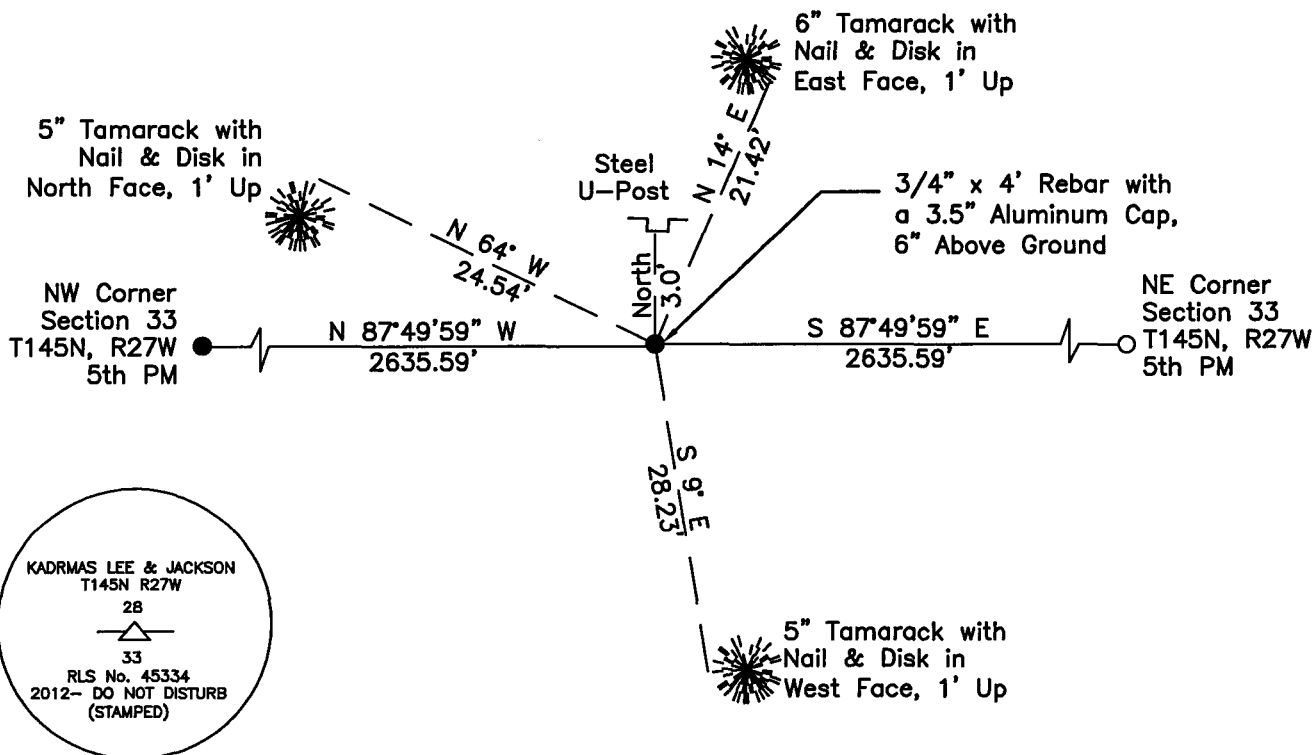
On \_\_\_\_\_, found a(n): \_\_\_\_\_  
DATE

- left monument as found
- removed monument (explain)
- lowered monument
- raised monument

On 7/30/2012, set a(n): 3/4" x 4' Rebar with a 3.5" Aluminum Cap, 6" Above Ground  
DATE

See "Statement of Evidence" for further details (on back)

(reserved for recording data)



**"SKETCH OF REFERENCE TIES"**  
(not to scale - bearings are magnetic)

Ties are measured to center of monument unless otherwise noted.

UNITS =  Metric  English

UTM COORDINATES, ZONE 15  
 Northing: 17203154.228  
 Easting: 1366489.797

NAD 83/1996 Adjustment.  
 Obtained by RTK GPS observations.

I hereby certify that this survey, plan, or report was prepared by me or under my direct supervision, and that I am a duly Licensed Land Surveyor under the laws of the State of Minnesota.

Ross Wamre signature 6/26/13 date  
 Ross Wamre, Minnesota License No. 45334

Page 1 of 2 A000600937



**STATEMENT OF EVIDENCE:** Quarter Corner to Sections 28 and 33 of Township 145 North, Range 27  
West of the 5<sup>th</sup> Principal Meridian.

**1873;** This corner was originally established by P. H. Conger, his field notes indicate that this corner was marked by a post and witnessed by:

Tamarack 3" dia. South 13<sup>o</sup> East, 12 Links  
Tamarack 3" dia. North 78<sup>o</sup> West, 16 Links

**2012;** A Kadrmas, Lee & Jackson Survey crew completed a field search and found no evidence of the corner position.

**2012;** Ross Wamre, RLS #45334, after analysis of record and survey information set a 3.5" Aluminum Cap on a ¾" x 4' Rebar, 6" above ground at lost single proportion methods. Witnesses were established as shown on the face of this certificate.

Contacts pertaining to this corner are as follows:

Cass County Recorder's Office  
Cass County Engineers Office  
Cass County Surveyors Office  
Northern Engineering and Consulting Inc.  
United States Forest Service  
MnDOT – District Office 2  
Bureau of Indians Affairs – Bemidji  
Bureau of Land Management's (BLM) Northeastern States Field Office