



A000600804

OFFICE OF THE COUNTY RECORDER
 CASS COUNTY, MINNESOTA
 CERTIFIED, FILED, AND/OR
 RECORDED ON

3/6/2014 11:51:32 AM

AS DOC #: A000600804

PAGES: 3

REC FEES: 0.00

KATHRYN M. NORBY
 CASS COUNTY RECORDER

BY SR Dep

Index No. N-5

CERTIFICATE OF LOCATION OF GOVERNMENT CORNER

Northeast Corner of Section 19
 Township 145 N, Range 29 W, 5th P.M.
 STATE OF MINNESOTA, COUNTY OF CASS

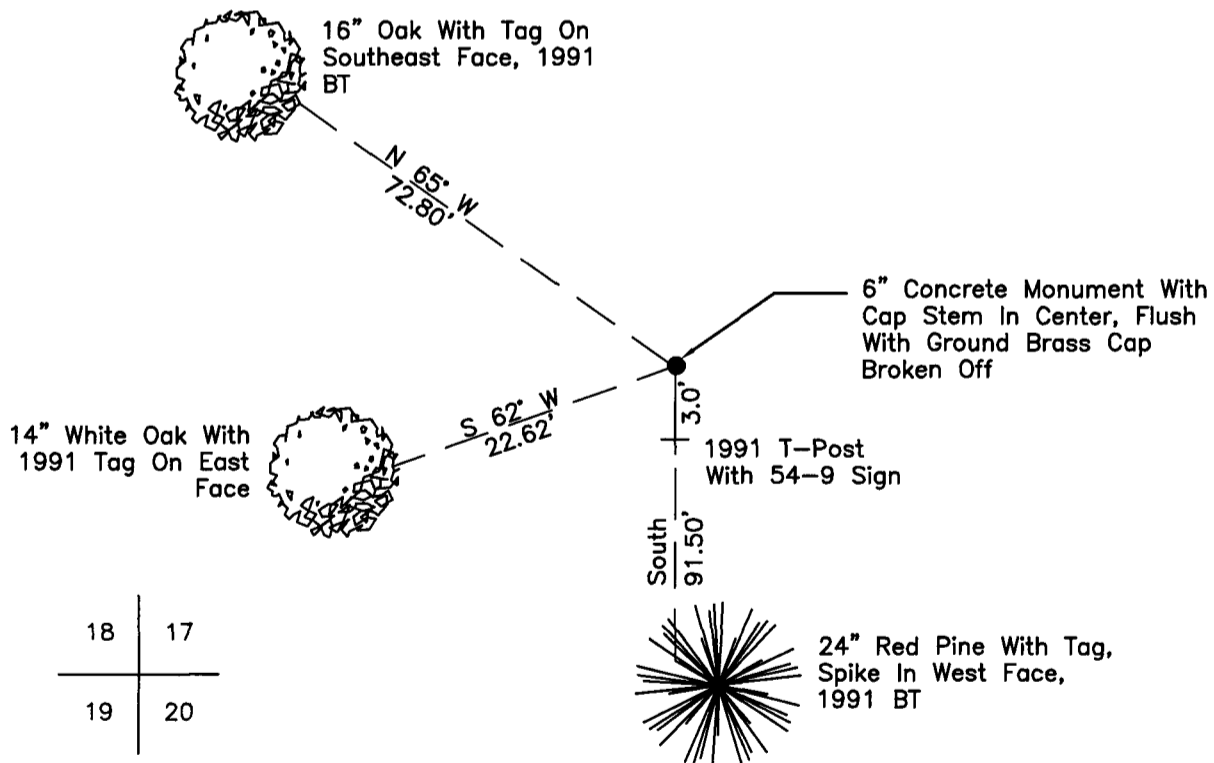
On 04/27/2010, found a(n): 6" Concrete Monument With
 Cap Stem In Center, Flush With Ground Brass Cap Broken Off

- left monument as found lowered monument
 removed monument (explain) raised monument

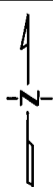
On _____, set a(n): _____

See "Statement of Evidence" for further details (on back)

(reserved for recording data)



"SKETCH OF REFERENCE TIES" (not to scale - bearings are magnetic)



Ties are measured to center of monument unless otherwise noted.

UNITS = Metric English

UTM COORDINATES, ZONE 15

Northing: 17214420.610

Easting: 1294710.848

NAD 83/1996 Adjustment.

Obtained by RTK GPS observations.

I hereby certify that this survey, plan, or report was prepared by me or under my direct supervision, and that I am a duly Licensed Land Surveyor under the laws of the State of Minnesota.

Ross Wamre
 signature

2/28/14
 date

Ross Wamre, Minnesota License No. 45334



STATEMENT OF EVIDENCE: Section Corner common to Sections 17, 18, 19 and 20 of Township 145 North, Range 29 West of the 5th Principal Meridian

1874; This corner was originally established by P.H. Conger for the GLO. His field notes indicate a wood post set at this corner position, witnessed by:

- Yellow Pine 16" North 14^o East, 20 links
- Yellow Pine 14" North 50^o West, 20 links
- Yellow Pine 10" South 28^o East, 18 links
- Yellow Pine 6" South 60^o West, 16 links

1898; Great Northern Railroad Right-of-Way and Track map 1804CS3 shows a distance tie to this corner. Information is on file with the Minnesota Department of Transportation.

1916; Minneapolis St. Paul & Sault Ste. Marie Railway Co. Right-of-Way and Track Map 1141CS2 shows an angle and distance tie to this corner. Information is on file with the Minnesota Department of Transportation.

1946; State of Minnesota Department of Highways Right-of-Way Index map file 32-86 show an angle and distance tie to US Highway No. 2. Corner location was estimated from two original BTs. Information is on file with the Minnesota Department of Transportation.

1958; USFS notes of Township 145 North, Range 29 West, Book 1, Page 9, on file at the USFS office in Cass Lake, MN show Pete Meyer, RLS #3628, found 2 original BTs, no other original evidence was found, he set a 6" diameter, 5' long concrete cylinder with a 3" diameter stamped brass cap RLS #3628 1958, he filed an Affidavit of Location of Corner and witnessed the corner by:

- Yellow Pine Stump 24" North 14^o East, 13.2' (1874 Tie)
- Yellow Pine Stump 16" South 28^o East, 11.9' - with scribe "BT" visible (1874 Tie)
- Jack Pine 13" North 49^o West, 45.6'
- Jack Pine 12" South 43 ½^o West, 28.4'
- Jack Pine 10" South 15^o West, 37.7'
- Jack Pine 12" South 80^o East, 42.0'

1973; USFS notes of Township 145 North, Range 29 West, Book 1, Page 9, on file at the USFS office in Cass Lake, MN show Curt Krause, USFS, found concrete monument in place, in good condition, 20" above ground. At SW corner of pine plantation and old homestead remains approx. 200' North witnessed by:

- Jack Pine snag 14" North 49^o West, 45.6' - scribe open, set tag (1958 Tie)
- Jack Pine 17" South 43^o West, 28.4' - scribe open, set tag (1958 Tie)
- Jack Pine 15" South 15^o West, 37.7' - scribe open, set tag (1958 Tie)
- Jack Pine 18" South 80^o East, 42.0' - scribe open, set tag (1958 Tie)
- Set FLSP White Pine 37" 320' South of corner at North edge of woods road running E-W.

1991; USFS notes of Township 145 North, Range 29 West, Book 1, Page 9, on file at the USFS office in Cass Lake, MN show Brama, USFS, found concrete monument as described in 1973 by Krause, and witnessed by:

- Jack Pine snag, North 49^o West, 45.6' (1958 Tie)
- Jack Pine stub, South 43^o West, 28.4' (1958 Tie)
- Jack Pine stub, South 15^o West, 37.7' (1958 Tie)
- Jack Pine snag, South 80^o East, 42.0' (1958 Tie)
- Red Pine 16" South, 91.5' marked: T145N R30W S20 BT
- W. Oak 8" South 62^o West, 22.62' marked: T145N R30W S19 BT
- W. Oak 12" North 65^o West, 72.80' marked: T145N R30W S18 BT
- N. Pine 16" North 8^o East, 93.05' marked: T145N R30W S17 BT
- 8' Steel sign post, South, 3' with survey sign attached

2001; Certificate of Survey of a Proposed Tower Site Document No. 1364 on file with the Cass County Surveyor's office show Robert Muscha, RLS #10078, found a concrete monument with rebar, bearing tree with tags, and a sign on a sign post at this corner location.



2010; A Kadrmas, Lee & Jackson survey crew found a 6" concrete monument with cap stem in center, brass cap broken off, flush with ground, witnesses found and established as shown on face of this certificate.

2012; Ross Wamre, RLS #45334, after analysis of record and survey information accepts this monument as the correct perpetuation of the corner.

Contacts pertaining to this corner are as follows:

Cass County Recorder's Office
Cass County Engineers Office
Cass County Surveyors Office
Northern Engineering and Consulting Inc.
United States Forest Service
MnDOT – District Office 2
Bureau of Indians Affairs – Bemidji
Bureau of Land Management's (BLM) Northeastern States Field Office