



A000600802

OFFICE OF THE COUNTY RECORDER
 CASS COUNTY, MINNESOTA
 CERTIFIED, FILED, AND/OR
 RECORDED ON

3/6/2014 11:51:30 AM

AS DOC #: A000600802

PAGES: 2

REC FEES: 0.00

KATHRYN M. NORBY
 CASS COUNTY RECORDER

BY SR _____ Dep

Index No. Z-3

CERTIFICATE OF LOCATION OF GOVERNMENT CORNER

Standard South Quarter Corner of Section 31
 Township 145 N, Range 29 W, 5th P.M.
 STATE OF MINNESOTA, COUNTY OF CASS

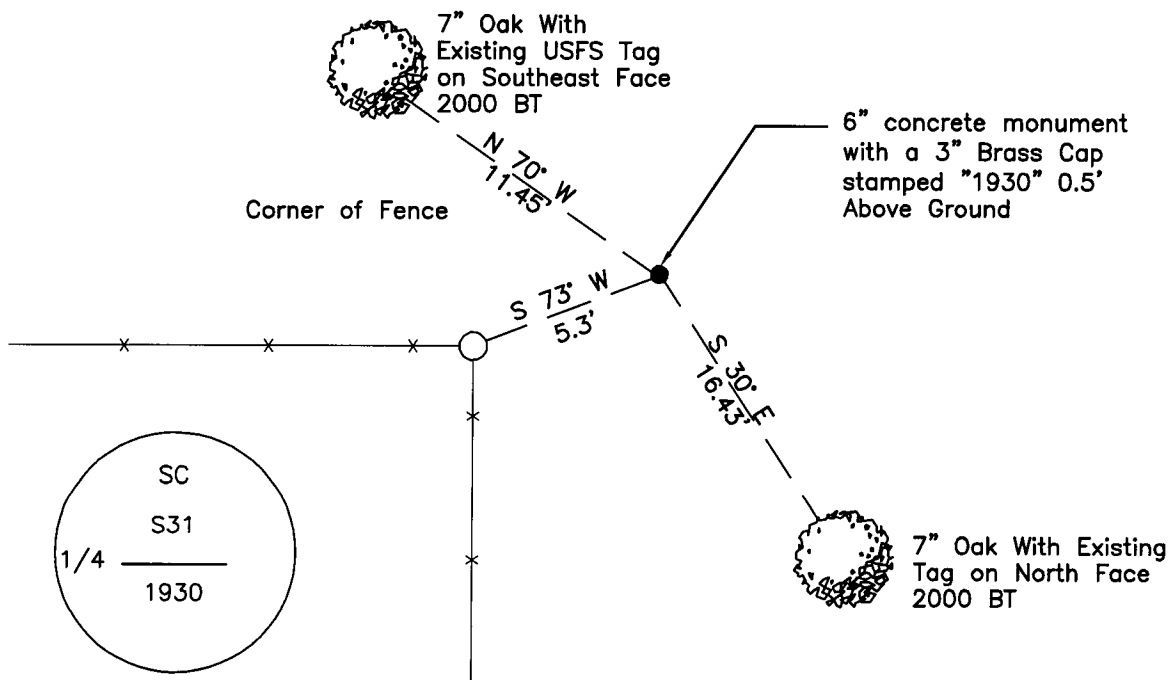
On 05/18/2010, found a(n): 6" concrete monument with a
DATE
3" Brass Cap stamped "1930" 0.5' Above Ground

- left monument as found lowered monument
 removed monument (explain) raised monument

On _____, set a(n): _____
DATE

See "Statement of Evidence" for further details (on back)

(reserved for recording data)



"SKETCH OF REFERENCE TIES" (not to scale - bearings are magnetic)

Ties are measured to center of monument unless otherwise noted.

UNITS = Metric English

UTM COORDINATES, ZONE 15

Northing: 17198616.910

Easting: 1291750.678

NAD 83/1996 Adjustment.

Obtained by RTK GPS observations.

I hereby certify that this survey, plan, or report was prepared by me or under my direct supervision, and that I am a duly Licensed Land Surveyor under the laws of the State of Minnesota.

Ross Wamre
 signature

2/28/14
 date

Ross Wamre, Minnesota License No. 45334



STATEMENT OF EVIDENCE: Standard Quarter Corner to Section 31 of Township 145 North, Range 29 West of the 5th Principal Meridian.

1871; This corner was originally established by G.R. Stuntz for the GLO. His field notes indicate that this corner position was marked with a post and witnessed by:

N. Pine 25" North 80° East, 7 Links
White Pine 15" North 75° West, 6 Links

1903; U.S. Army Corps of Engineers recovered this corner according to Township 145 N Range 29 W flowage map for the Leech Lake and Lake Winnibigoshish Reservoirs. Map is on file at the USFS office in Cass Lake, MN.

1930; GLO resurvey set from the two original bearing trees a concrete monument 6" dia, 26" long, 22" in the ground with a brass cap stamped 1930 and witnessed by:

N. Pine Stump 25" North 80° East, 7 Links (1873 Tie)
White Pine Stump 15" North 75° West, 6 Links (1873 Tie)
Elm 12" North 83° East, 244 Links
Poplar 5" North 14 ¾° West, 71 Links

2000; USFS Notes Book 2 of Township 145 North, Range 29 West, page 16, show R. Main, USFS, found monument in place, clear cut ground, a fence corner 7' North, fence line North and West, and witnessed by:

W. Oak 7" North 70° West, 11.45', FS shield not scribed
W. Oak 7" South 30° East 16.43' to spike, not scribed (old location poster on BT)

2010; A Kadrmas, Lee & Jackson survey crew found a 6" concrete monument with a 3" brass cap stamped "1930" 0.5' above ground, witnesses found and established as shown on the face of this certificate.

2012; Ross Wamre, RLS #45334, after analysis of record and survey information accepts this monument as the correct perpetuation of the corner.

Contacts pertaining to this corner are as follows:

- Cass County Recorder's Office
- Cass County Engineers Office
- Cass County Surveyors Office
- Northern Engineering and Consulting Inc.
- United States Forest Service
- MnDOT – District Office 2
- Bureau of Indians Affairs – Bemidji
- Bureau of Land Management's (BLM) Northeastern States Field Office