

CERTIFICATE OF LOCATION OF GOVERNMENT CORNER

E 1/4 Corner of Section 4, Township 140 N, Range 26 W, 5th p.m., State of Minnesota, County of Cass

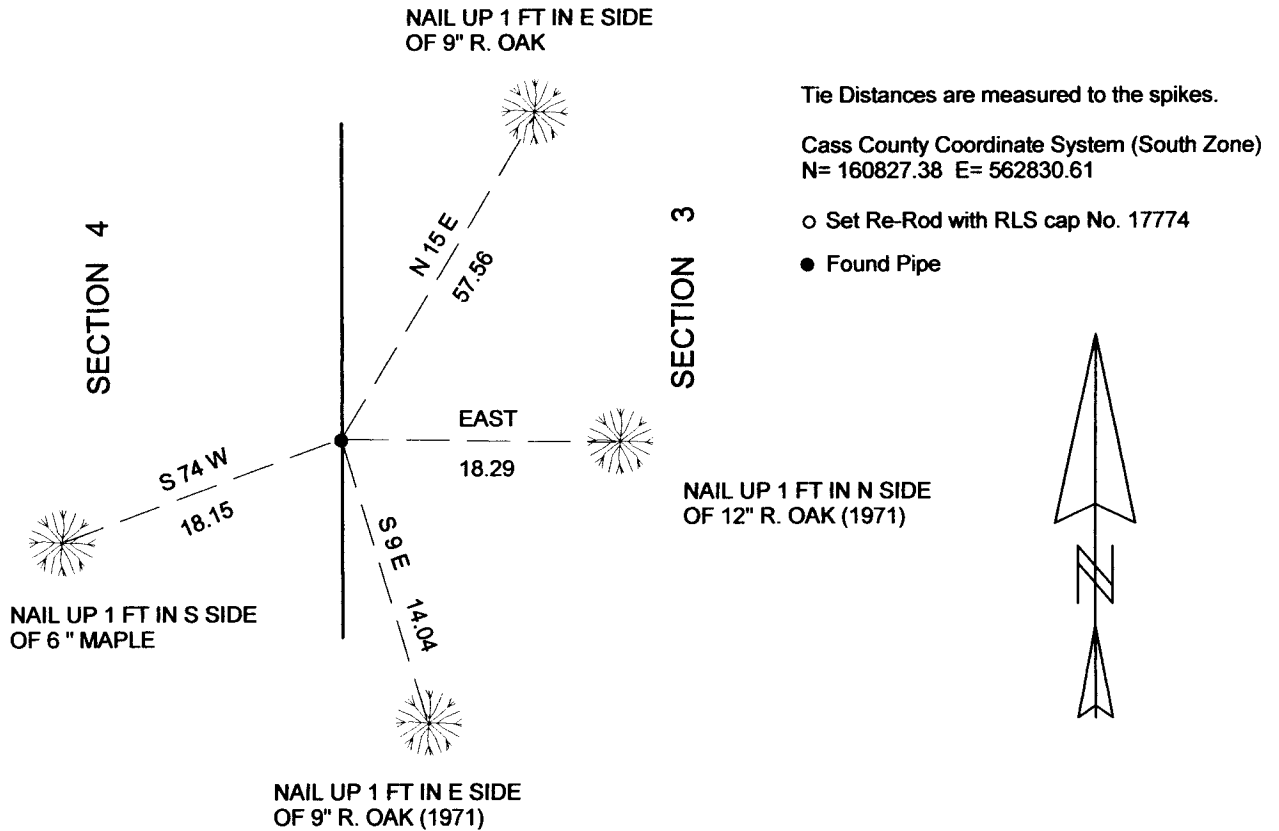
At the corner location shown on the sketch:

On 23 MAY 2013 found a 1.5 INCH OD IRON PIPE WITH PLUMBER CAP
Date

X left monument as found lowered monument removed monument (explain)

On _____ placed a _____
Date

SKETCH OF REFERENCE TIES



NOT TO SCALE

Statement of evidence relative to this corner location is on back of page.

I hereby certify that this document and the data contained herein was prepared by me or under my direct supervision.

Marvin R. Kohout 2/28/2014
Marvin R. Kohout Date

MN License No, 17774

Land surveyor

OFFICE OF COUNTY RECORDER



A000600795

**OFFICE OF THE COUNTY RECORDER
CASS COUNTY, MINNESOTA
CERTIFIED, FILED, AND/OR
RECORDED ON**

3/6/2014 11:51:23 AM

AS DOC #: **A000600795**

PAGES: 2

REC FEES: 0.00

**KATHRYN M. NORBY
CASS COUNTY RECORDER**

BY SR _____ Dep

Page 1 of 2 A000600795



INDEX NO. C.0-13.0

STATEMENT OF EVIDENCE

THE EAST QUARTER CORNER OF SECTION 4, TOWNSHIP 140 N., RANGE 26 W., 5TH P.M.

1871 ALLEN AND PUTNAM, DEPUTY GOVERNMENT SURVEYORS, SET A WOODEN POST TO MARK THE LOCATION OF THIS CORNER. REFERENCES: 6" OAK N30W 11.22 FT 6" OAK S40E 15.18 FT RECORDS ON FILE AT THE MN HISTORICAL SOCIETY, ST. PAUL, MINNESOTA AND COPIES AT THE CASS COUNTY HWY DEPT/ SURVEYOR'S OFFICE (CCHD/SO)

CIRCA 1970 WORKSHEET F1-2-337 INDICATES THE SUBJECT CORNER LIES PROPORTIONALLY BETWEEN THE SW AND NW CORNERS OF SEC. 3. CCHD/SO

1971 DON COULTER, LS 5852, SET A 1.25" BY 5' IRON PIPE PROPORTIONALLY BETWEEN THE SW AND NW CORNERS OF SEC. 3. REFERENCES (FACE TIES): 10" TWIN MAPLE N62-45E 25.3 FT 6" TWIN MAPLE N5-30W 29.45 FT 12" R. OAK N89-45E 17.7 FT 10" R. OAK S12-30E 13.55 FT CASS CO. LAND CORNER RECORD CCHD/SO

1982 TERRY FREEMAN, TECHNICIAN, FOUND COULTER'S PIPE AND ALL 4 WITNESS TREES. CASS CO. LAND CORNER RECORD CCHD/SO

1999 L. LEUELLING, LS 16089, INDICATES FOUND IRON PIPE ON HIS CERTIFICATE OF SURVEY CCHD/SO

2010 B. HIPPEN, TECHNICIAN, FOUND A 1.5" OD IRON PIPE, WITH PLUMBER CAP, UP 2.5' NEAR THE TOP OF A HILL AT THE EAST EDGE OF RECENT LOGGING. REFERENCES (DUPLEX NAILS): 12" R. OAK (1971) EAST 18.29 FT 9" R. OAK (1971) S9E 14.04 FT 9" R. OAK N15E 57.56 FT 6" MAPLE S74W 18.15 FT CCHD/SO

2013 MARVIN KOHOUT, LS 17774, KOHOUT LAND SURVEYING, FOUND THE IRON PIPE AND REFERENCES NOTED BY HIPPEN IN 2010 AND ACCEPTED THE PIPE AS MARKING THE LOCATION OF THIS CORNER.