

# CERTIFICATE OF LOCATION OF GOVERNMENT CORNER

WC TO MC#4 of Section 24, Township 139 N., Range 25 W., 5th P.M.  
 State of Minnesota, County of Cass

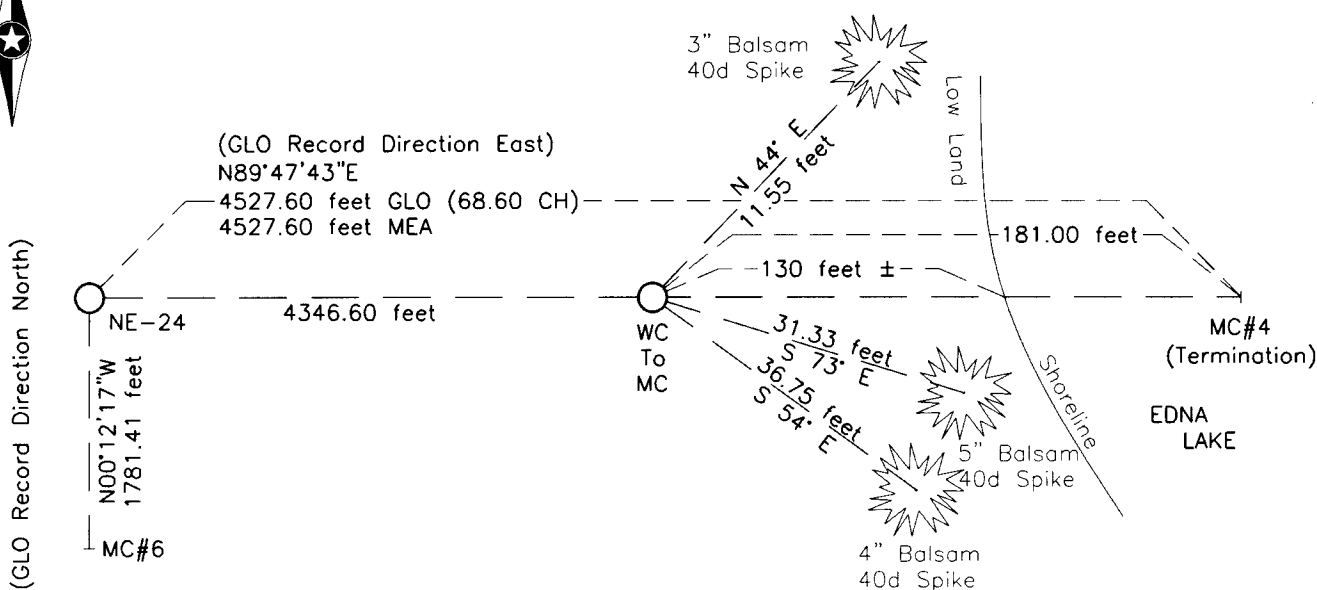
At the corner location shown on the sketch:

On \_\_\_\_\_ found \_\_\_\_\_

left monument as found     lowered monument     removed monument (explain)

On Oct. 31, 2013 placed 1/2 in OD iron pipe stamped with 17768

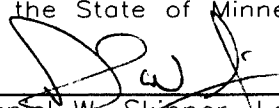
Page 1 of 2 A000600781



NOTE:  
 All bearings are Cass Co. North  
 NAD 83, 96 Adj

Statement of evidence relative to this corner location is on the back of this page.

I hereby certify that this survey, plan or report was prepared by me or under my direct supervision and that I am a duly Licensed Land Surveyor under the laws of the State of Minnesota.

  
 Daniel W. Skinner, Land Surveyor  
 Date 2-16-14 MN License No. 40827



**A000600781**  
**OFFICE OF THE COUNTY RECORDER**  
**CASS COUNTY, MINNESOTA**  
**CERTIFIED, FILED, AND/OR**  
**RECORDED ON**  
**3/6/2014 11:51:09 AM**  
**AS DOC #: A000600781**  
**PAGES: 2**  
**REC FEES: 0.00**  
**KATHRYN M. NORBY**  
**CASS COUNTY RECORDER**  
 BY SR \_\_\_\_\_ Dep



**Meander corner #4, Section 24, Township 139 North, Range 25 West, 5th Principal Meridian. Index No. N, 24-25**

Statement of Evidence

Nov.16, 1863 - Johnson and Thornton, GLO Deputy Surveyors, set a post for the original corner and referenced it as follows: 7" Tam. N 12 degrees W 17 links (11.22 feet); 6" Tam. S 6 degrees W 20 links (13.20 feet).

The above record is on file with the Minnesota Historical Society, St. Paul, Minnesota, copies are on file in the Cass County Surveyor's Office (CCSO).

CCSO Files

1937 - Civilian Conservation Corps (CCC) personnel, Washburn Lake notes, Book 2, page 35, on file in the Minnesota Department of Natural Resources Office (MNDNR), set 4" tam post for approximate meander corner.

Karvakko Engineering

Oct. 31, 2013 - Karvakko Engineering Survey Crew found no evidence of the posts or bearing trees since the GLO record distance fell in Edna Lake. Meander corner #4 was established by using the GLO record direction & distance from the northwest corner of Section 24 since this is a terminating meander corner. A ½ inch outside diameter iron pipe stamped 17768 was set as a witness corner 181.00 feet westerly of the location of MC#4. The following witnesses were marked: 3" Balsam N 44 degrees E 11.55 feet; 5" Balsam S 73 degrees E 31.33 feet; 4" Balsam S 54 degrees E 36.75 feet.

Analysis of the recovered record data, field evidence and survey measurements, indicated that the monument set using Obliterated Methods is the accepted location of this corner.