

CERTIFICATE OF LOCATION OF GOVERNMENT CORNER

NE Corner of Section 13, Township 139N, Range 26W, 5th p.m., State of Minnesota, County of Cass

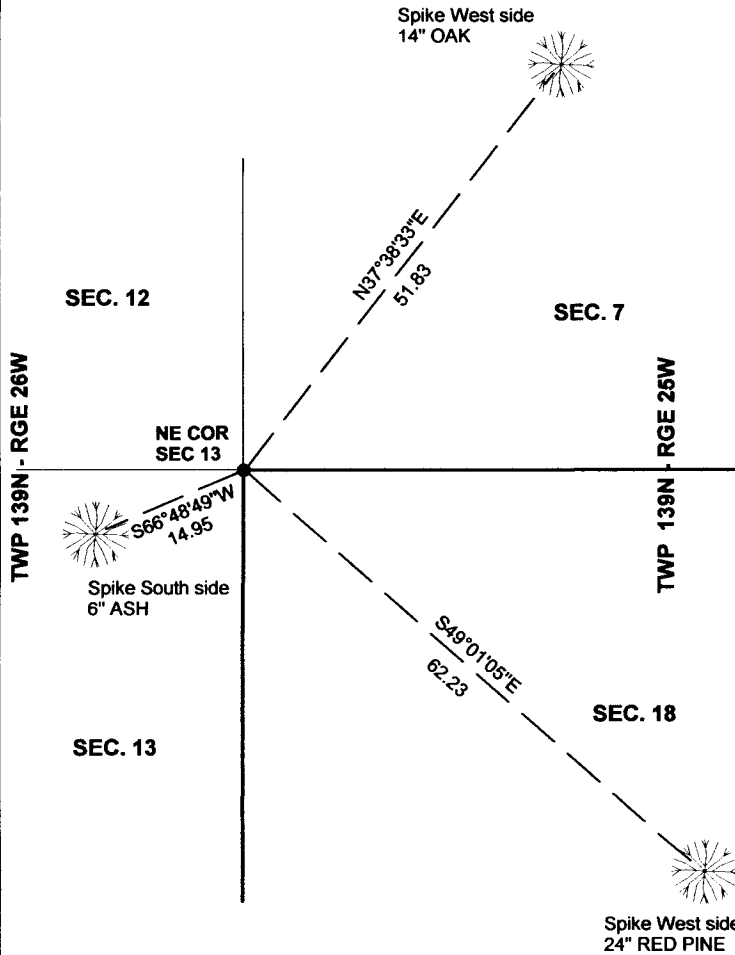
At the corner location shown on the sketch:

On 10/16/2012 found a 2 1/2" CAPPED PIPE, UP 0.3'
Date

left monument as found lowered monument removed monument (explain)

On _____ placed a _____
Date

SKETCH OF REFERENCE TIES



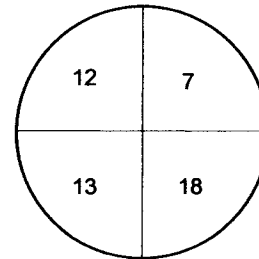
Tie Distances are measured to the spikes.

Cass County Coordinate System (North Zone)
N= 121104.6797 E= 578618.1068

○ Set Re-Rod with RLS cap No. 17774

● Found Pipe

DETAIL OF CAP



NOT TO SCALE

Statement of evidence relative to this corner location is on back of page.

I hereby certify that this document and the data contained herein was prepared by me or under my direct supervision.

Marvin R. Kohout 25 FEB 2013
Marvin R. Kohout Date

Registration No. 17774

Land surveyor

OFFICE OF COUNTY RECORDER



A000600636

**OFFICE OF THE COUNTY RECORDER
CASS COUNTY, MINNESOTA
CERTIFIED, FILED, AND/OR
RECORDED ON**

2/26/2014 11:15:18 AM

AS DOC #: A000600636

PAGES: 2

REC FEES: 0.00

**KATHRYN M. NORBY
CASS COUNTY RECORDER**

BY KF Dep

Page 1 of 2
A000600636



INDEX NO. J.0 – 25.0

STATEMENT OF EVIDENCE

NORTHEAST CORNER SECTION 13, TOWNSHIP 139N, RANGE 26W, 5TH P.M.

- 1863 DEPUTY SURVEYORS ALONZO THORNTON AND G. A. JOHNSON IN THE ORIGINAL GOVERNMENT SURVEY SET A POST AND MARKED BT'S. REFERENCES ARE:
8" ASH N 60 E 22 LINKS 5" MAPLE S 15 E 27 LINKS
20" W PINE S 65 W 53 LINKS 14" W PINE N 62 W 42 LINKS

- 1920 BEN CLARK, LS NO. 231, SET A CAPPED 2 ½" X 36" I.M., USING LOST METHOD. NEW REFERNCE: 8" RED PINE S 63 E 69.6, COUNTY BOOK "C", PAGE 541, SURVEY RECORD NO. 483, CURO BOOK 162, PAGES 35-44.

- 1936 CCC, WASHBURN LAKE, AT 79 CHAINS FROM THE WEST, FOUND AN IRON PIPE MARKING THE SECTION CORNER. BOOK NO. 3, PG. 67, COUNTY BOOK 4, PAGE 1

- 2012 MARVIN KOHOUT, LS NO. 17774, AND DOUG STILLE, TECHNICIAN, OF KOHOUT LAND SURVEYNG FOUND A 2 ½" CAPPED IRON PIPE AND ACCEPTED IT AS MARKING THE SECTION CORNER LOCATION