

CERTIFICATE OF LOCATION OF GOVERNMENT CORNER

NE Corner of Section 5, Township 141 N, Range 26 W, 5th p.m., State of Minnesota, County of Cass

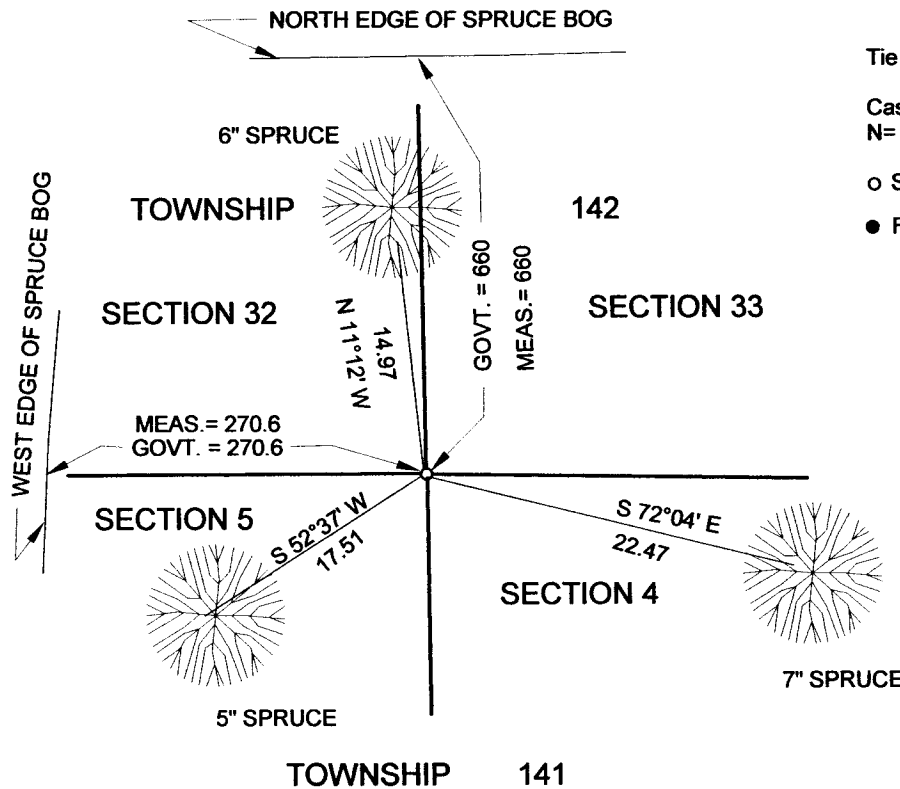
At the corner location shown on the sketch:

On _____ found a _____
Date _____

_____ left monument as found lowered monument removed monument (explain)

On 16 DEC. 2013 placed a 3/8" BY 24" REROD WITH RLS NO. 17774 CAP
Date _____

SKETCH OF REFERENCE TIES

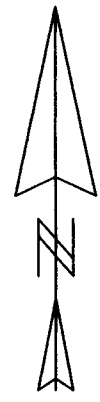


Tie Distances are measured to spike in B.T.

Cass County Coordinate System (North Zone)
N= 195002.597 E= 557235.262

○ Set Re-Rod with RLS cap No. 17774

● Found Monument



NOT TO SCALE

Statement of evidence relative to this corner location is on back of page.

I hereby certify that this document and the data contained herein was prepared by me or under my direct supervision.

Marvin R Kohout 13 FEB 2014
Marvin R. Kohout Date

Registration No. 17774

Land surveyor

OFFICE OF COUNTY RECORDER



A000600634

**OFFICE OF THE COUNTY RECORDER
CASS COUNTY, MINNESOTA
CERTIFIED, FILED, AND/OR
RECORDED ON**

2/26/2014 11:15:16 AM

AS DOC #: A000600634

PAGES: 2

REC FEES: 0.00

**KATHRYN M. NORBY
CASS COUNTY RECORDER**

BY KF Dep

A000600634
Page 1 of 2



INDEX NO. A.0-9.0

STATEMENT OF EVIDENCE

NORTHEAST CORNER OF SECTION 5, TOWNSHIP 141 N., RANGE 26 W., 5TH P.M.

1871 WALKER, ALLEN AND EDGAR P. PUTNAM, DEPUTY GOVERNMENT SURVEYORS, SET A WOODEN POST. REFERNCES: 4" SPRUCE S34E 15.84 FT 4" SPRUCE S12W 9.24 FT 8" SPRUCE N30W 3.3 FT ON FILE AT THE MN HISTORICAL SOCIETY, ST. PAUL AND COPIES AT THE CASS COUNTY HWY DEPT/ SURVEYOR'S OFFICE (CCHD/SO)

2013 MARVIN KOHOUT, LS NO. 17774, KOHOUT LAND SURVEYING, SEARCHED FOR THE ORIGINAL TIE TREES. NO EVIDENCE WAS FOUND. USING THE ORIGINAL GOVERNMENT DIMENSIONS, NORTH AND WEST, TO THE EDGE OF A SPRUCE BOG, I ESTABLISHED THE LOCATION FOR THIS CORNER AND MARKED IT WITH A 3/8" BY 24" REROD.