

# CERTIFICATE OF LOCATION OF GOVERNMENT CORNER

Standard Southeast Corner of Section 32  
Township 145 N , Range 29 W , 5th P.M.  
STATE OF MINNESOTA, COUNTY OF CASS



**A000600048**

**OFFICE OF THE COUNTY RECORDER  
CASS COUNTY, MINNESOTA  
CERTIFIED, FILED, AND/OR  
RECORDED ON**

**1/30/2014 11:01:25 AM**

**AS DOC #: A000600048**

**PAGES: 2**

**REC FEES: 0.00**

**KATHRYN M. NORBY  
CASS COUNTY RECORDER**

BY SR Dep

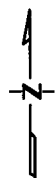
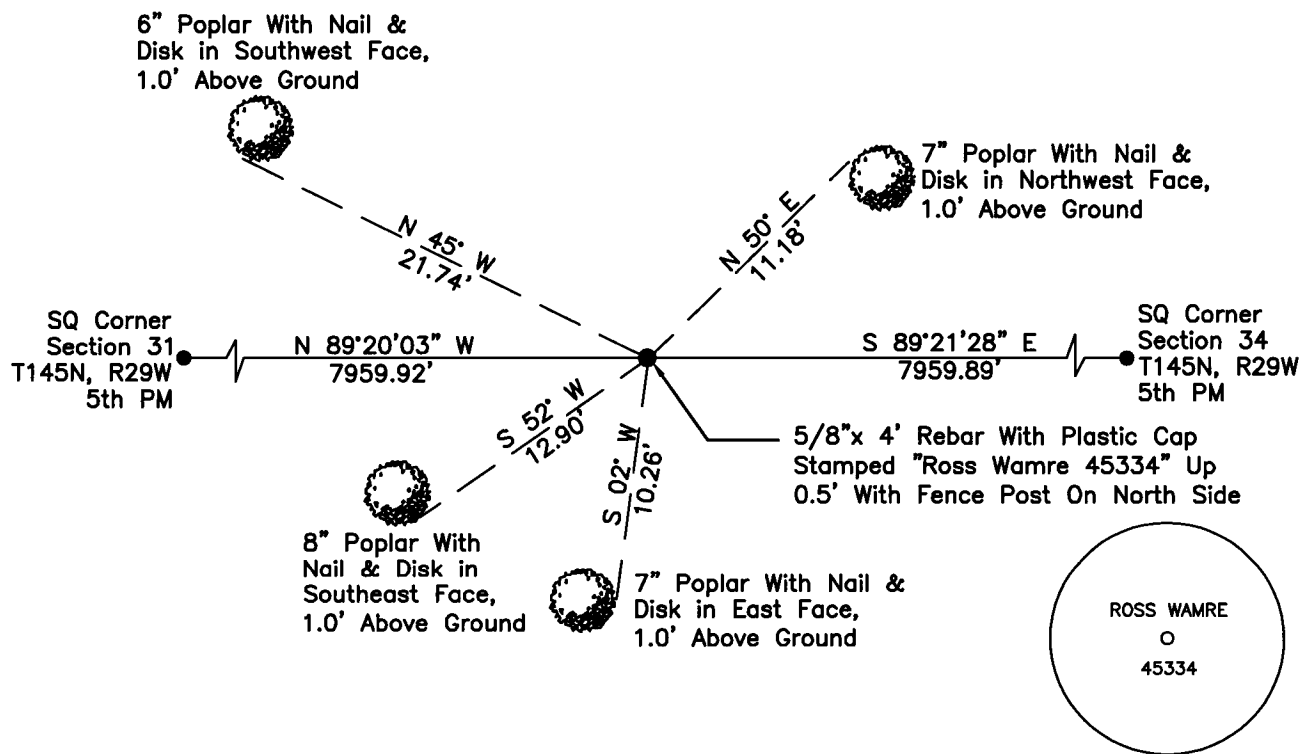
On \_\_\_\_\_, found a(n): \_\_\_\_\_  
DATE

- left monument as found
- lowered monument
- removed monument (explain)
- raised monument

On 7/10/2012, set a(n): 5/8"x 4' Rebar With Plastic Cap  
DATE  
Stamped "Ross Wamre 45334" Up 0.5' With Fence Post On North Side

See "Statement of Evidence" for further details (on back)

(reserved for recording data)



### "SKETCH OF REFERENCE TIES" (not to scale - bearings are magnetic)

Ties are measured to center of monument unless otherwise noted.

UNITS =  Metric  English

UTM COORDINATES, ZONE 15

Northing: 17198524.430

Easting: 1299710.060

NAD 83/1996 Adjustment.

Obtained by RTK GPS observations.

I hereby certify that this survey, plan, or report was prepared by me or under my direct supervision, and that I am a duly Licensed Land Surveyor under the laws of the State of Minnesota.

Ross Wamre  
signature

6/24/13  
date

Ross Wamre, Minnesota License No. 45334



**STATEMENT OF EVIDENCE:** Standard Corner to Sections 32 and 33 of Township 145 North, Range 29 West of the 5<sup>th</sup> Principal Meridian.

**1871;** This corner was originally established by G.R. Stuntz for the GLO. His field notes indicate that this corner position was marked with a wood post and witnessed by:

Sugar Maple 8" North 25° East, 30 Links  
Sugar Maple 12" North 70° West, 29 Links

**2010;** A Kadrmas, Lee & Jackson survey crew found no evidence of this corner location

**2012;** Ross Wamre, RLS #45334, after analysis of record and survey information set a 5/8" x 4' Rebar with plastic cap at a lost single proportionate measurement between the Standard South Quarter of Section 31 and the Standard South Quarter of Section 34. Witnesses found and established as shown on the face of this certificate.

Contacts pertaining to this corner are as follows:

Cass County Recorder's Office  
Cass County Engineers Office  
Cass County Surveyors Office  
Northern Engineering and Consulting Inc.  
United States Forest Service  
MnDOT – District Office 2  
Bureau of Indians Affairs – Bemidji  
Bureau of Land Management's (BLM) Northeastern States Field Office