

CERTIFICATE OF LOCATION OF GOVERNMENT CORNER

Northeast Corner of Section 29
Township 145 N, Range 29 W, 5th P.M.
STATE OF MINNESOTA, COUNTY OF CASS



A000600043

OFFICE OF THE COUNTY RECORDER
CASS COUNTY, MINNESOTA
CERTIFIED, FILED, AND/OR
RECORDED ON

1/30/2014 11:01:20 AM

AS DOC #: A000600043

PAGES: 2

REC FEES: 0.00

KATHRYN M. NORBY
CASS COUNTY RECORDER

BY SR Dep

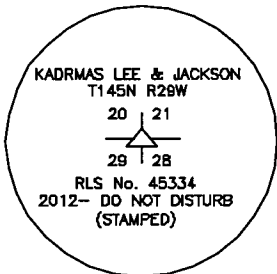
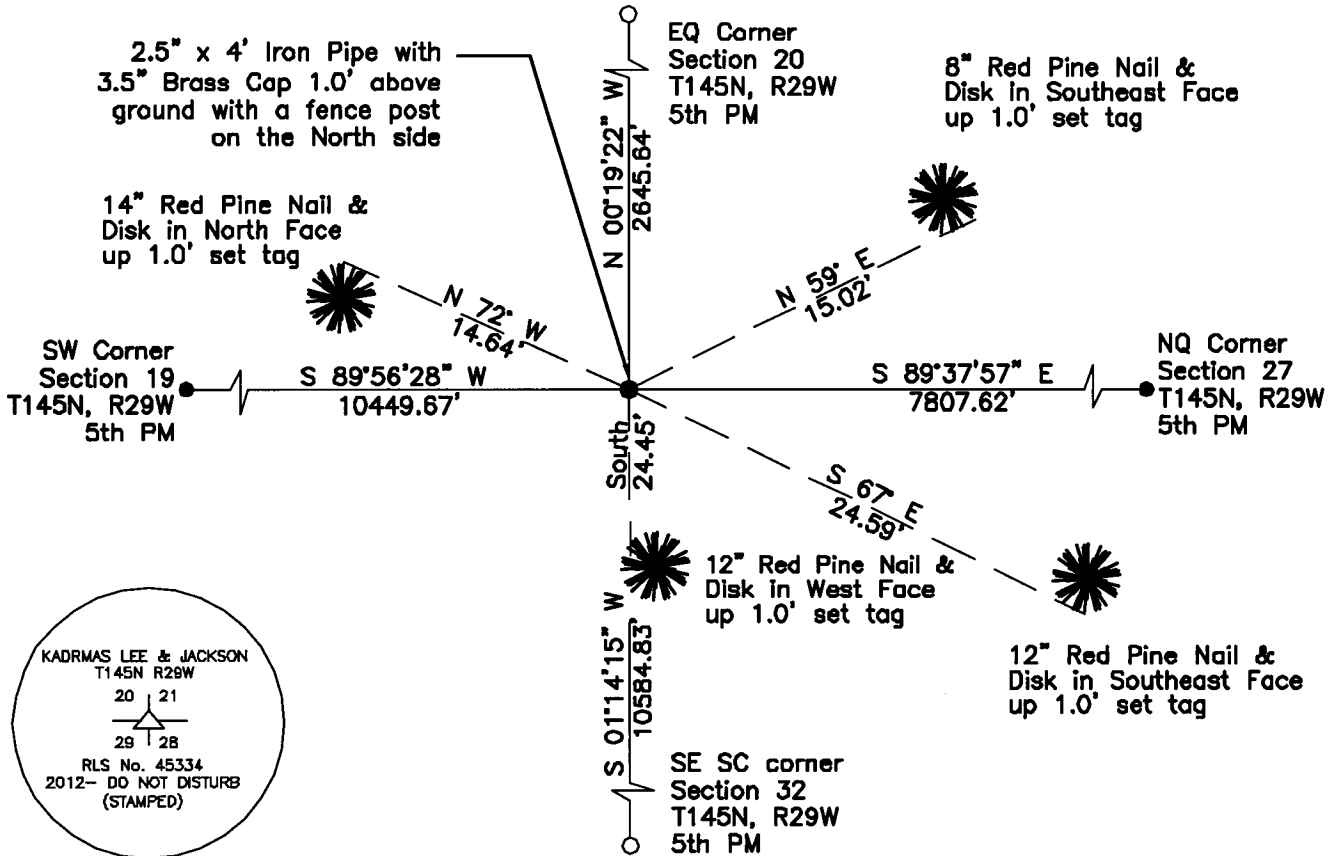
On _____, found a(n): _____

- left monument as found
- lowered monument
- removed monument (explain)
- raised monument

On 7/25/2012, set a(n): 2.5" x 4' Iron Pipe with a 3.5" Brass Cap, 1.0' Above ground with a fence post on the North side

See "Statement of Evidence" for further details (on back)

(reserved for recording data)



"SKETCH OF REFERENCE TIES" (not to scale - bearings are magnetic)



Ties are measured to center of monument unless otherwise noted.

UNITS = Metric English

UTM COORDINATES, ZONE 15

Northing: 17209106.786
Easting: 1299938.654

NAD 83/1996 Adjustment.
Obtained by RTK GPS observations.

I hereby certify that this survey, plan, or report was prepared by me or under my direct supervision, and that I am a duly Licensed Land Surveyor under the laws of the State of Minnesota.

Ross Wamre
signature

6/12/13
date

Ross Wamre, Minnesota License No. 45334





STATEMENT OF EVIDENCE: Corner common to Sections 20, 21, 28 and 29 of Township 145 North, Range 29 West of the 5th Principal Meridian.

1874; This corner was originally established by P. H. Conger, his field notes indicate that this corner was marked by a post and witnessed by:

- White Pine 30" South 49° West, 14 Links
- White Pine 30" North 48° West, 27 Links
- White Pine 20" North 62° East, 68 Links
- White Pine 18" South 67° East, 64 Links

2010; A Kadrmas, Lee & Jackson survey crew found no evidence of this corner location

2012; Ross Wamre, RLS# 45334, set a 5/8" x 4' Rebar with a 3 1/2" Aluminum Cap up 1.0' at a location lost double proportionate measurement location as calculated from the East Quarter Corner of Section 20, and the North Quarter Corner of Section 27, the Southeast Standard Corner of Section 32 and the Southwest Corner of Section 19. Witnesses established as shown on face of this certificate.

Contacts pertaining to this corner are as follows:

- Cass County Recorder's Office
- Cass County Engineers Office
- Cass County Surveyors Office
- Northern Engineering and Consulting Inc.
- United States Forest Service
- MnDOT – District Office 2
- Bureau of Indians Affairs – Bemidji
- Bureau of Land Management's (BLM) Northeastern States Field Office