

CERTIFICATE OF LOCATION OF GOVERNMENT CORNER

North Quarter Corner of Section 8
Township 138 N, Range 31 W, 5th P.M.
STATE OF MINNESOTA, COUNTY OF Cass



A000599912

OFFICE OF THE COUNTY RECORDER
CASS COUNTY, MINNESOTA
CERTIFIED, FILED, AND/OR
RECORDED ON

1/27/2014 10:38:23 AM

AS DOC #: A000599912

PAGES: 2

REC FEES: 0.00

KATHRYN M. NORBY
CASS COUNTY RECORDER

BY SR _____ Dep

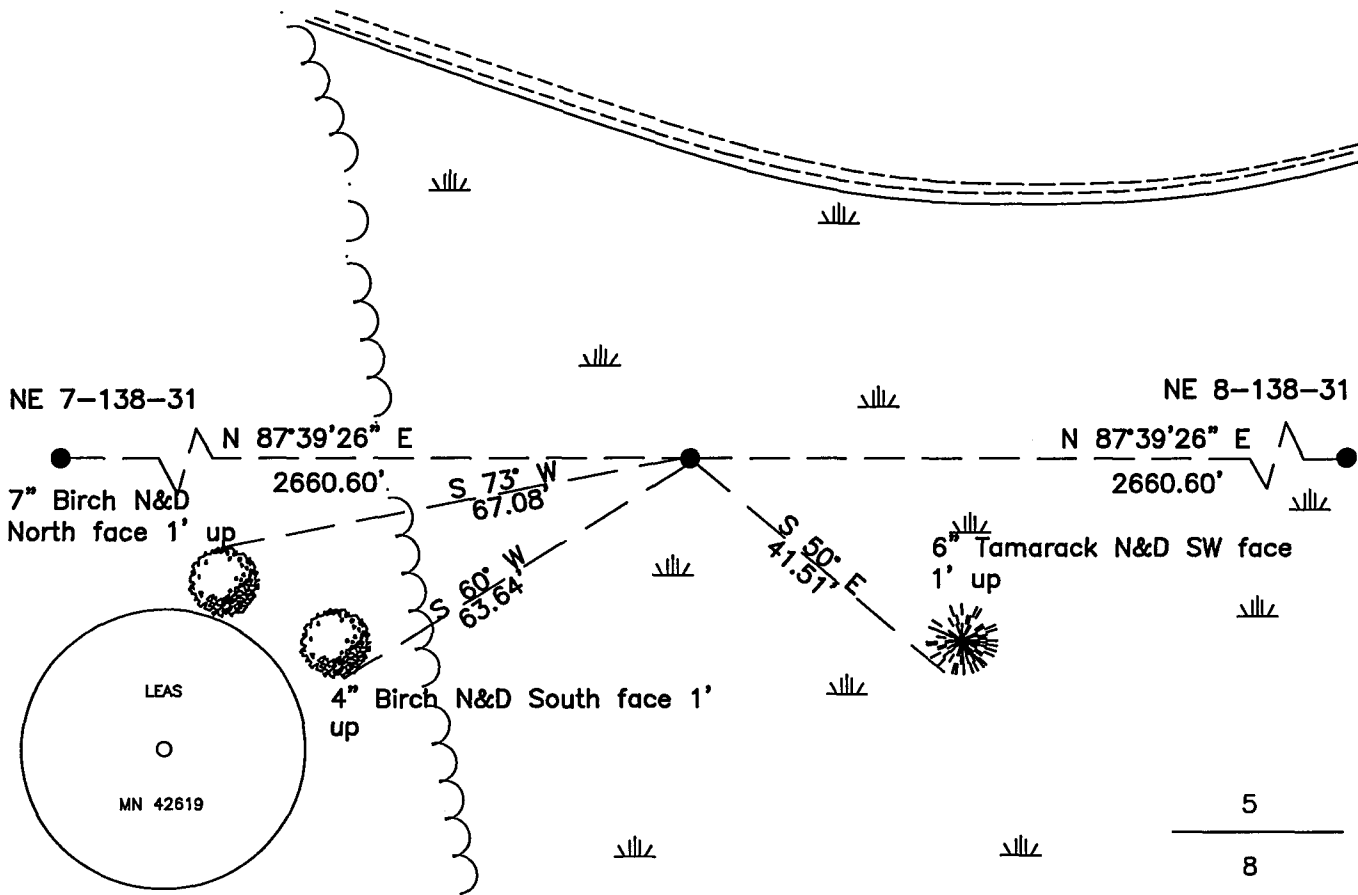
On _____, found a(n): _____
DATE

- left monument as found
- removed monument (explain)
- lowered monument
- raised monument

On 10/23/2012, set a(n): 5/8" X 60" Rebar With Plastic Cap
Stamped "Leas ^{DATE} MN 42619" up 0.5' in Swamp

See "Statement of Evidence" for further details (on back)

(reserved for recording data)



"SKETCH OF REFERENCE TIES" (not to scale - bearings are magnetic)

Ties are measured to center of monument unless otherwise noted.

UNITS = Metric English

CASS COUNTY SOUTH COORDINATES

Northing: 331005.363
Easting: 459416.527

NAD 83/2007 Adjustment.
Obtained by RTK GPS observations.

I hereby certify that this survey, plan, or report was prepared by me or under my direct supervision, and that I am a duly Licensed Land Surveyor under the laws of the State of Minnesota.

signature

1-14-14
date

Jarrett M. Leas, Minnesota License No. 42619

Page 1 of 2 A000599912



Statement of Evidence

North Quarter corner of Section 8, Township 138 North, Range 31 West, 5th Principal Meridian.

- Nov. 1870 T.B.Walker, General Land Office (GLO) Deputy Surveyor set a W.C. post for the original corner and referenced it as follows:
8" Red Oak S 66°30' W 30 links
6" Red Oak N 40° W 25 links
Said records are on file at the Minnesota Historical Society, St. Paul, Minnesota, copies are filed with the Cass County Surveyor's Office (CCSO).
- Oct. 2012 KLJ field crews search and find no evidence of the corner. KLJ computes a lost corner position from proportioning between the SW and SE corners of section 5, splitting the overall distance of 5321.20' on a bearing of N87°39'26"E and sets a new monument stamped "Leas MN 42619". Monument is witnessed with the ties shown on the front of this certificate.