

CERTIFICATE OF LOCATION OF GOVERNMENT CORNER

N 1/4 Corner of Section 32, Township 139 N., Range 29 W., 5TH p.m., State of Minnesota, County of Cass

At the corner location shown on the sketch:

On 1 OCT. 2013 found a 1" IRON PIPE
Date

LEFT MONUMENT AS FOUND lowered monument removed monument (explain)

On _____ placed a _____
Date

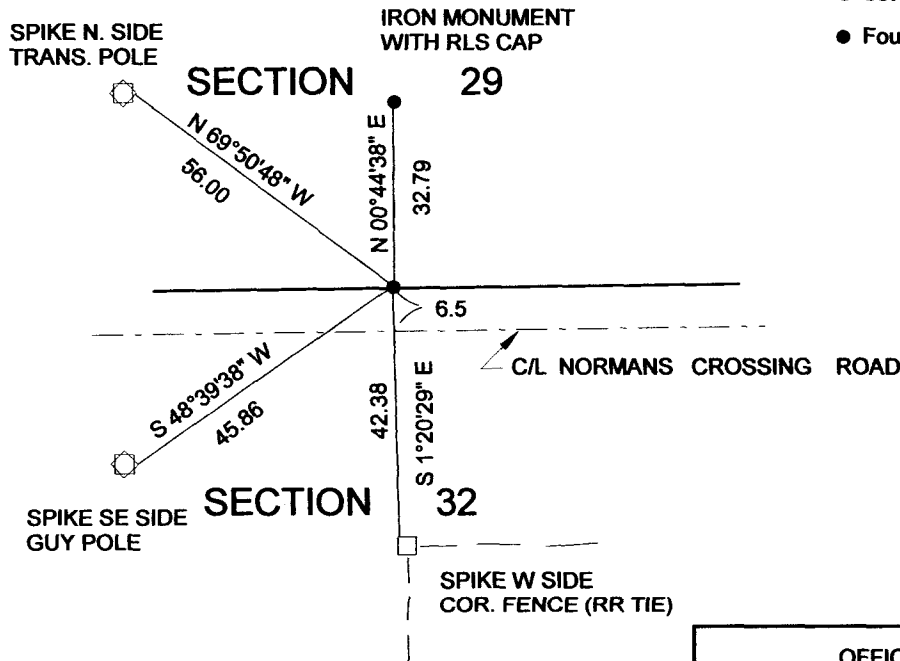
SKETCH OF REFERENCE TIES

Tie Distances are measured to the spikes.

Cass County Coordinate System (North Zone)
N= 106088.391 E= 460534.357

o Set Re-Rod with RLS cap No. 17774

● Found Monument



NOT TO SCALE

Statement of evidence relative to this corner location is on back of page.

I hereby certify that this document and the data contained herein was prepared by me or under my direct supervision.

Marvin R Kohout 3 Jan 2014
Marvin R. Kohout Date

License No. 17774

Land surveyor

OFFICE OF COUNTY RECORDER



A000599465

OFFICE OF THE COUNTY RECORDER
CASS COUNTY, MINNESOTA
CERTIFIED, FILED, AND/OR
RECORDED ON

1/7/2014 9:17:09 AM

AS DOC #: A000599465

PAGES: 2

REC FEES: 0.00

KATHRYN M. NORBY
CASS COUNTY RECORDER

BY SR Dep

Page 1 of 2 A000599465



INDEX NO. V.0-7.0

STATEMENT OF EVIDENCE

NORTH QUARTER CORNER OF SECTION 32, TOWNSHIP 139 N., RANGE 29 W., 5TH P.M.

- 1865 GEORGE B. WRIGHT AND THOMAS B. WALKER, U.S. DEPUTY SURVEYORS SET A WOOD POST TO MARK THE LOCATION OF THE CORNER DURING THE SUBDIVISION OF THIS TOWNSHIP. THEY ESTABLISHED TWO BEARING TREES:
24" NORWAY PINE S79W 28 LKS 10" NORWAY PINE N64E 47 LKS
RECORDS ON FILE AT THE MN HISTORICAL SOCIETY, ST. PAUL AND COPIES AT THE CASS COUNTY HWY DEPT/ SURVEYOR'S OFFICE (CCHD/SO)

- 1912 JOHN W. CURO, LS NO. 1428, SET A STAKE AT THE CORNER LOCATION. REFERENCES:
16 N. PINE STUMP SW 50.75 4 JACK PINE SSE 45.0 CURO BK 99 PG 54; COUNTY SURVEY RECORD BOOK "B" PG 200-211 CCHD/SO

- 1922 JOHN M. GREENE INDICATES CORNER ON PLAT OF NAPANEE BEACH. BK A PG 79 DOC. NO. 78738 CCHD/SO

- 1928 ENGINEER A.R. TAUBMAN SHOWS A CONCRETE MONUMENT DITCH BOX 3 BK 160 PG 41 SAR 7 CCHD/SO

- 1932 S.S. WALKER SHOWS CORNER 17 WEST OF C/L ROAD NO. 19 DB 2 BK 160 PG 46 SAR 7 CCHD/SO

- 1942 JOHN W. CURO, LS NO. 1428, LOOKED FOR MONUMENT, NOT FOUND CURO BK 424 PG 52 CCHD/SO

- 1996 DAVID LANDECKER, LS NO. 17008, ON CERTIFICATE OF SURVEY SHOWS FOUND MONUMENT. SURVEY RECORD 2918 COUNTY AUDITOR'S OFFICE AND CCHD/SO

- 2013 MARVIN KOHOUT, LS NO. 17774, AND DOUGLAS STILLE, TECHNICIAN, KOHOUT LAND SURVEYING, FOUND A 1" IRON PIPE IN THE NORTH TRAFFIC LANE OF AN EAST-WEST ROAD. PIPE IS ACCEPTED AS MARKING THE CORNER LOCATION.