

CERTIFICATE OF LOCATION OF GOVERNMENT CORNER

MC #30 Corner of Section 32, Township 139 N., Range 29 W., 5TH p.m., State of Minnesota, County of Cass

At the corner location shown on the sketch:

On 1 OCT. 2013 found a CAPPED 2 1/2" GALV. PIPE, UP 1.37 FEET
Date

LEFT MONUMENT AS FOUND lowered monument removed monument (explain)

On _____ placed a _____
Date

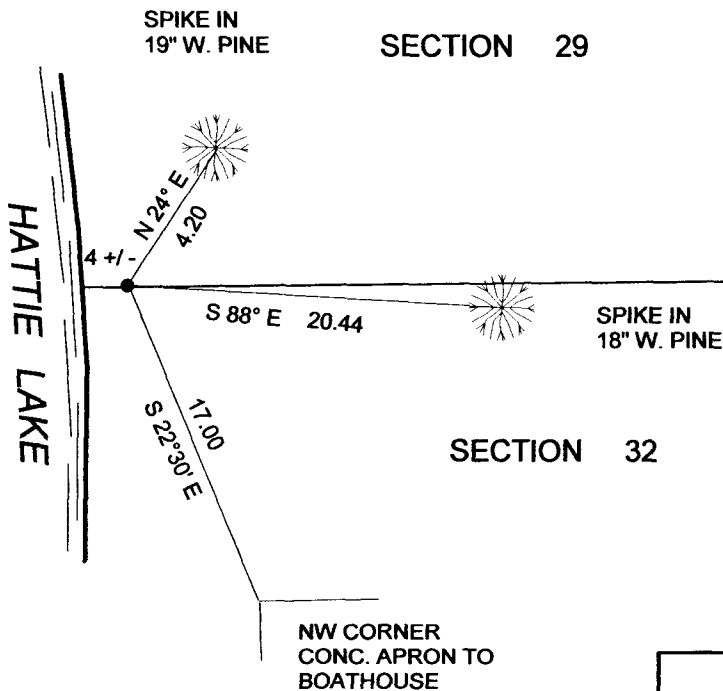
SKETCH OF REFERENCE TIES

Tie Distances are measured to the spikes.

Cass County Coordinate System (North Zone)
N= 106101.060 E= 458956.642

○ Set Re-Rod with RLS cap No. 17774

● Found Monument



NOT TO SCALE

Statement of evidence relative to this corner location is on back of page.

I hereby certify that this document and the data contained herein was prepared by me or under my direct supervision.

Marvin R Kohout 3 Jan 2014
Marvin R. Kohout Date

License No. 17774

Land surveyor

OFFICE OF COUNTY RECORDER



A000599464

OFFICE OF THE COUNTY RECORDER
CASS COUNTY, MINNESOTA
CERTIFIED, FILED, AND/OR
RECORDED ON

1/7/2014 9:17:08 AM

AS DOC #: A000599464

PAGES: 2

REC FEES: 0.00

KATHRYN M. NORBY
CASS COUNTY RECORDER

BY SR _____ Dep

Page 1 of 2 A000599464



INDEX NO. V.0-5.8

STATEMENT OF EVIDENCE

MEANDER CORNER NO. 30, SECTION 32, TOWNSHIP 139 N., RANGE 29 W., 5TH P.M.

- 1865 GEORGE B. WRIGHT AND THOMAS B. WALKER, U.S. DEPUTY SURVEYORS SET A WOOD POST TO MARK THE LOCATION OF THE CORNER. REFERENCES:
12" N. PINE S42E 52 LKS 12" N. PINE N64E 66 LKS
RECORDS ON FILE AT THE MN HISTORICAL SOCIETY, ST. PAUL AND COPIES AT THE CASS COUNTY HWY DEPT/ SURVEYOR'S OFFICE (CCHD/SO)
- 1912 JOHN W. CURO, LS NO. 1428, SET A STAKE USING THE STUMPS OF THE ORIGINAL BEARING TREES. CURO BK 99 PG 50, COUNTY SURVEY RECORD BOOK "B" PG 198-211 CCHD/SO
- 1912 JOHN W. CURO, LS NO. 1428, REPLACES STAKE WITH A 2 X 48 CAPPED GALV. PIPE. REFERENCES: 4" J. PINE N51-44E 58.93 8" J. PINE S80-30E 39.50
4" N. PINE S5-19E 65.05 CURO BK 99 PG 53, COUNTY SURVEY RECORD BOOK "B" PG 198-211 CCHD/SO
- 1916 NOVAK MENTIONS THE CORNER. CURO BK 54A PG 37, SURVEY RECORD 285 CCHD/SO
- 1922 JOHN GREENE, ON THE PLAT OF NAPANEE BEACH, INDICATES A 2 1/4 INCH X 4 FOOT IRON MONUMENT MARKING THE MC #30 LOCATION. BK A PG 79 AND COUNTY RECORDER DOCUMENT NUMBER 78738
- 2013 MARVIN KOHOUT, LS NO. 17774, AND DOUG STILLE, TECHNICIAN, KOHOUT LAND SURVEYING, FOUND THE CAPPED IRON MONUMENT. ACCEPTED THE CAPPED IRON MONUMENT AS THE CORNER LOCATION.