



A000599325

OFFICE OF THE COUNTY RECORDER
CASS COUNTY, MINNESOTA
CERTIFIED, FILED, AND/OR
RECORDED ON

12/30/2013 3:43:10 PM

AS DOC #: A000599325

PAGES: 2

REC FEES: 0.00

KATHRYN M. NORBY
CASS COUNTY RECORDER

BY SR _____ Dep

Twp 139 Rge 26 Index No. R.0-25.0

CERTIFICATE OF LOCATION OF GOVERNMENT CORNER

Northeast Corner of Section 25, Township 139 N., Range 26 W., 5th P.M.
State of Minnesota, County of Cass

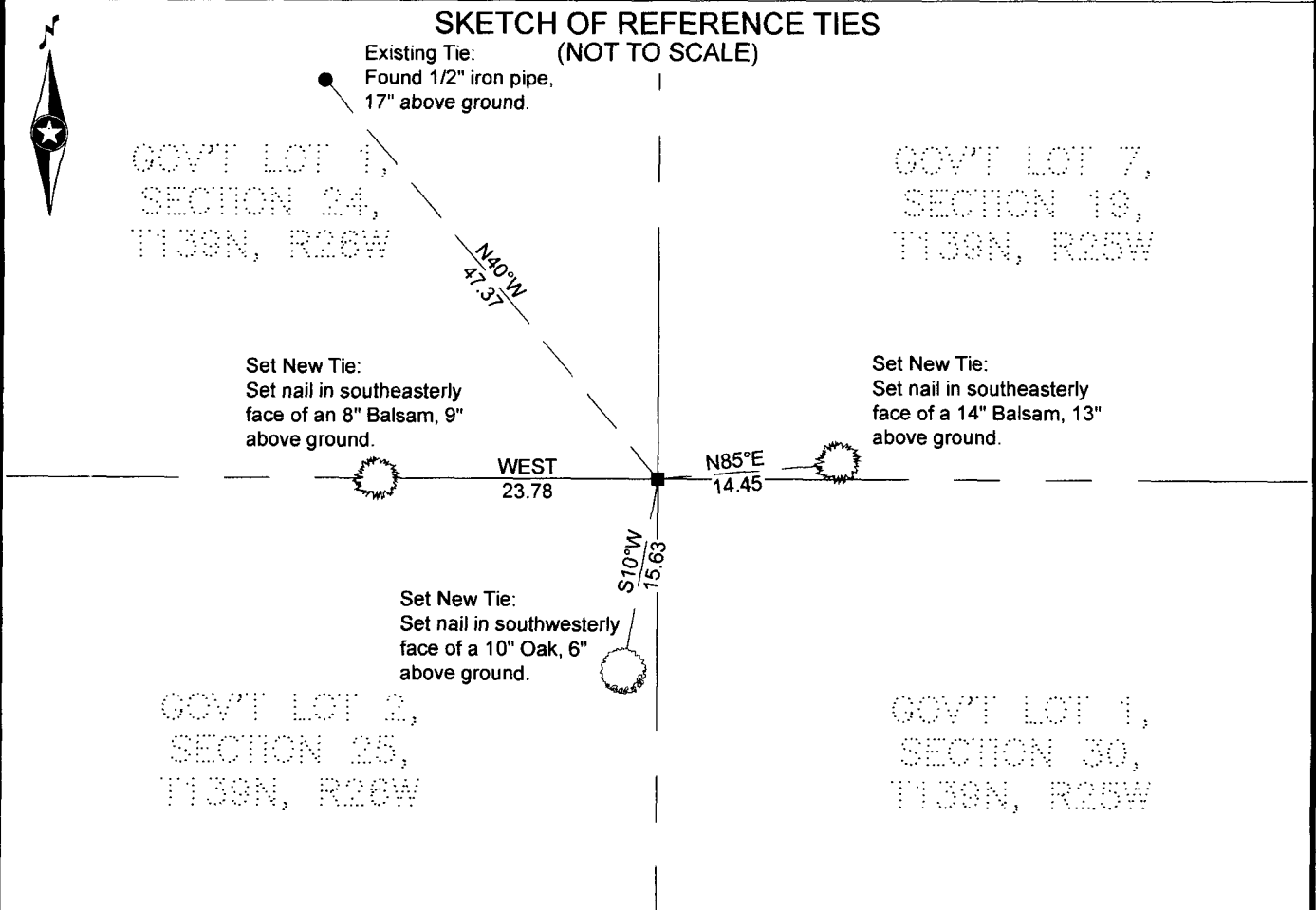
At the corner location shown on the sketch:

On 10-30-2013 found a 4" x 4" concrete monument, 7" above surface grade.

left monument as found lowered monument removed monument (explain)

On _____ placed _____


SKETCH OF REFERENCE TIES (NOT TO SCALE)



NOTE: All bearings are true.

Statement of evidence relative to this corner location is on the back of this page.

I hereby certify that this survey, plan, or report was prepared by me or under my direct supervision and that I am a duly Licensed land Surveyor under the laws of the State of Minnesota. I further certify that this United States public land survey monument record is correct and complete to the best of my knowledge and belief.


Terry L. Freeman, Land Surveyor

Date 12/30/13 MN License No. 21367

Index No. R.0-25.0 **STATEMENT ON EVIDENCE****Northeast Corner of Section 25, Township 139 North, Range 26 West of the 5th Principal Meridian.**

In 1863, Johnson and Thornton, U.S. Deputy Surveyors, while running the east line of the township, set a wood post in place to mark the location of this corner and established bearing trees as follows: a 12" Yellow Pine, N47°E 50 links; a 6" Fir Stub, S60°E 44 links; a 10" Yellow Pine, S28°W 19 links; and a 13" Yellow Pine, N51°W 53 links.

In 1927, J.P. Larsen, surveyor, indicates concrete monument on the plat of TINGDALE BROS' LAKE ROOSEVELT SHORES.

In 1937, The C.C.C. set the approximate corner 78 links east of random line. Information in Washburn Lake Book #2, Page 7.

In 1937, The C.C.C. found a 4" cement post and a 8" Norway Pine, N18°E 15 feet with a yellow tag. Information in Washburn Lake Book #2, Page 29.

In 1938, The C.C.C. set a control post at corner by side of resort road to Manning's, also control post 1141.4 feet south of corner at Swatara Road. Information in Washburn Lake Book #20, Page 53.

In 1971, The County Highway Department while surveying County Road #58 found the concrete monument in place.

In 1986, Buckler map shows in place.

In 2003, Bruce Grivma, RLS 17253 Certificate of Survey shows monument found.

On October 30, 2013, a Northern Engineering & Consulting, Inc. survey found a concrete monument 7" above surface grade. They accept the found monument as a perpetuation of the original corner. Four new ties were set as shown on the front of this certificate.

County Coordinates (Cass County North)

Northing	110601.828
Easting	578709.436