



A000599321

OFFICE OF THE COUNTY RECORDER  
CASS COUNTY, MINNESOTA  
CERTIFIED, FILED, AND/OR  
RECORDED ON

12/30/2013 3:43:06 PM

AS DOC #: A000599321

PAGES: 3

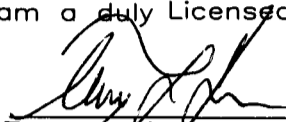
REC FEES: 0.00

KATHRYN M. NORBY  
CASS COUNTY RECORDER  
BY SR \_\_\_\_\_ Dep

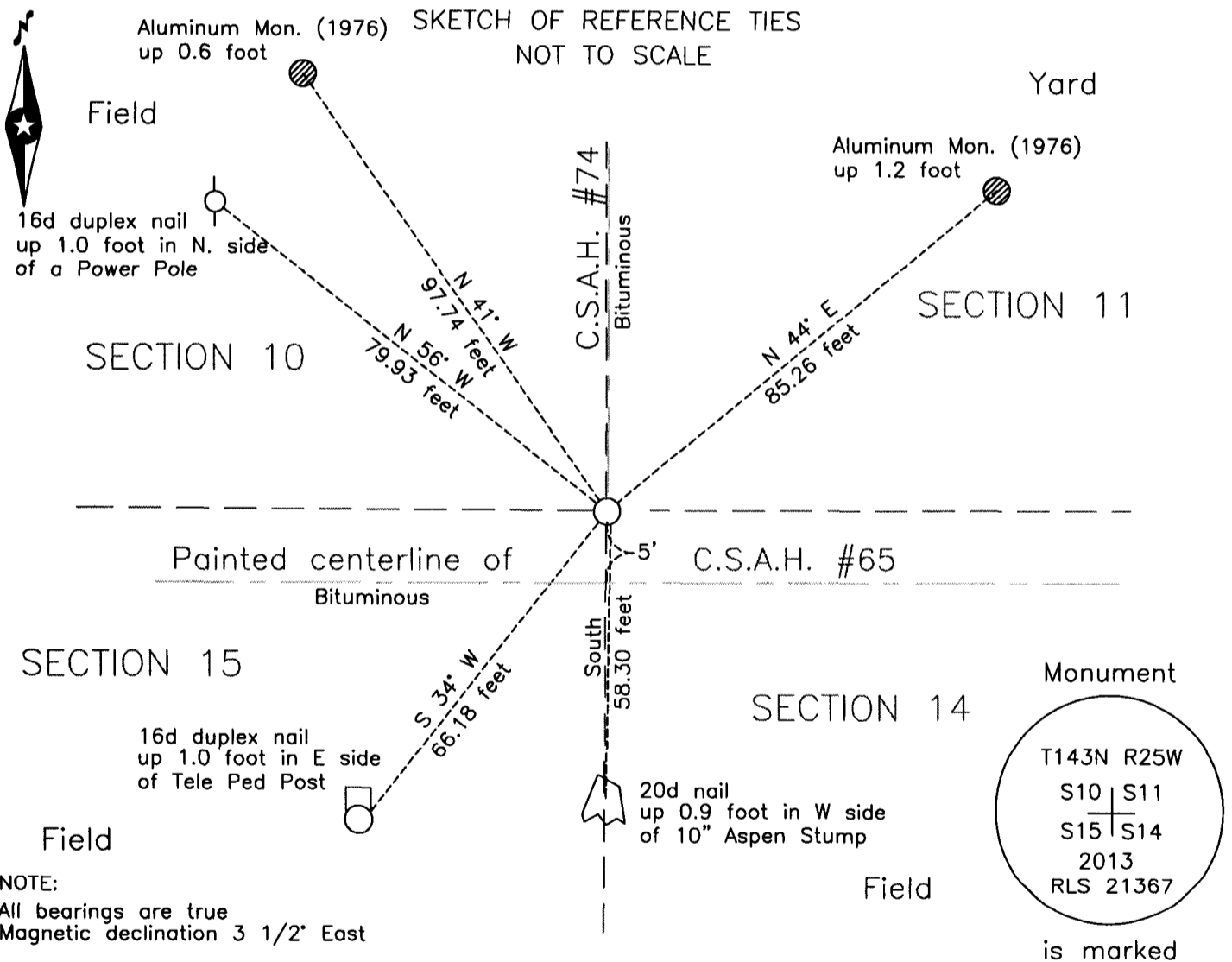
Page 1 of 3 A000599321

Twsp 143 Rge 25 Index No. J.0-17.0

I hereby certify that this survey, plan or report was prepared by me or under my direct supervision and that I am a duly Licensed Land Surveyor under the laws of the State of Minnesota.

  
Terry L. Freeman, Cass County Surveyor  
Date 12/30/13 MN License No. 21367

### CERTIFICATE OF LOCATION OF GOVERNMENT CORNER



Northeast corner of Section 15, Township 143 N., Range 25 W., 5th P.M.  
State of Minnesota, County of Cass

At the corner location shown on the sketch:

On 8 May 13 found a 7/8 inch outside diameter iron pipe, down 0.1 foot  
5 feet ± north of new centerline CSAH #65.

left monument as found     lowered monument     removed monument (explain)

On 8 Oct 13 placed a 1 inch Aluminum tube with Aluminum cap, down 0.05 foot  
5 feet ± north of new centerline CSAH #65.

Statement of evidence relative to this corner location is on the back of this page.

**Index No. J.0-17.0**Statement of Evidence**Northeast corner of Section 15, Township 143 North, Range 25 West, 5th Principal Meridian.**

- July 1872 E.W. Griffin, General Land Office (GLO) Deputy Surveyor, set a post for the original corner in his subdivision of this township and referenced it as follows:  
 10" Spruce N 59° E 10 links (6.60 feet) 10" Fir N 87° W 25 links (16.50 feet)  
 6" Linden S 40° E 8 links (5.28 feet) 16" Fir S 12° W 30 links (19.80 feet)  
 Said records are on file at the Minnesota Historical Society, St. Paul, Minnesota, copies are filed with the Cass County Surveyor's Office (CCSO).
- April 1900 F.V. Abbot, Major, United States Army, Corps of Engineers (ACE), Lake Pokegama Reservoir Map and notes on file with ACE St. Paul office and copies were made of said notes in 1982 by the United States Department of Agriculture, Forest Service (USFS) offices in Cass Lake, MN. The map by symbol indicates this to be a known corner.
- Aug. 1908 J.H. Flynn, Cass County Surveyor, County Record Book of Survey C, Record No. 416, page 184, on file in the CCSO, lists GLO witnesses as follows:  
 10" Spruce N 39° E 10 links (6.60 feet) 10" Fir N 87° W 25 links (16.50 feet)  
 6" Linden S 40° E 8 links (5.28 feet) 16" Fir S 12° W 38 links (25.08 feet)  
 New witnesses as follows:  
 13" Elm S 26° E 59.0 feet 9" Dry W. Oak N 38° W 76.0 feet
- Circa 1910 G.A. Ralph, Curo Book Number 82, page 48, on file in the CCSO, indicate an old bt at the subject corner as follows:  
 12" Elm S 46°31' E 40.80 feet
- Sept. 1913 J.W. Curo, Cass County Surveyor, County Record Book of Survey B, Record No. 239, page 8, on file in the CCSO, states "James Flynn, who found the old S.E. and S.W. Gov't bearing trees from which we set a stake for the true corner ... After Mr. Flynn set this corner Mr. Lewis Kirt pulled up Mr. Flynn's stake and put in its place an iron sled shoe driven its full length in the ground. We find the sled shoe and both of the bearing trees established by Mr. Flynn & we also find the old S.W. Gov't bearing tree, from which we find that the old sled shoe has been knocked half an inch out of place and in trying to straighten it in place, Mr. Lewis Kirt, breaks it off a foot or so underground: We put in its place a 2 x 4 x 24 inch dry oak stake". New witnesses a follows:  
 Cedar stump S 50°14' W 40.05 feet SW School House N 36°45' E 81.45 feet  
 13" Elm (Flynn) S 26° E 58.74 feet
- Sept. 1914 F.A. Donner, deputy County Surveyor, County Record Book of Survey C, Record No. 485, page 547, and Curo Book 94, page 15, on file in the CCSO, indicates GLO and Curo witnesses and notes the following new witnesses:  
 14" Elm S 24°08' E 58.7 feet Balsam stump S 52°15' W 40.1 feet
- Nov. 1965 J.Ekstrom, USFS, Field Book #1, page 79, on file in the offices in Cass Lake, MN, notes indicate he found the School House foundation, verified by land owner and set a 6 inch concrete cylinder monument with stamped brass cap 6 inches below road surface. The following accessories are noted:  
 16" Spruce N 80° E 140.0 feet Tel. Box N 42° W 56.9 feet
- March 1966 D. Cole, LS 1286, Cass County Engineer, CSAH #65, State Project No. 11-665-02, on file in the Cass County Highway Department (CCHD), notes indicate corner assumed at old fence line to South and road to North at centerline Station 662+27.2.
- March 1966 R. Schneider, LS 5740, Certificate of Survey, on file in the CCSO, indicates Forest Serv. Mon. for corner and subdivision of Section 11 and witnesses as follows:  
 14" Spruce N 80° E 139.00 feet 1/2" I. Pipe South 54.75 feet  
 P. Pole N 43° W 98.15 feet
- Aug. 1967 W.Okerman, LS 6807, USFS, in an Affidavit of Location of Government Corner on the 1965 information, filed in the office of the Cass County Recorder in June 28, 1968 and recorded by R.L. Kovanen on Feb. 26, 2013 as document number A000590100. The following accessories are noted.  
 Tel post N 42° W 56.9 feet 6" Fence post N 20° E 60.4 feet  
 P. Pole N 42° W 97.9 feet 7" Aspen South 58.3 feet
- July 1976 L.D. Gilbert, Bureau of Land Management (BLM), Supervisory Cadastral Surveyor, notes state "determined latitudinally by the center line of a road right-of- way extending E., and longitudinally by the center line of a road right-of-way bearing N. and S. There is no remaining evidence of the orig. cor.; however, this position is harmoniously related to existing local control adopted in this resurvey, and is accepted as the best available evidence of the orig. cor. Position." set a copper-coated steel stake, 24 ins. Long, 8 ins. Below the surface, with copper cap and referenced it as follows:  
 2.5" Alum post N 44° E 85.2 feet 2.5" Alum post N 44° W 98.0 feet  
 Said records are on file at the Minnesota Historical Society, St. Paul, Minnesota, copies are filed with the CCSO.
- Circa 1980 G. Steveson, LS 12684, Cass County Surveyor, worksheet on file in the CCSO, indicates errors in the BLM survey.



**Index No. J.0-17.0**

- Aug. 1983 A.E. Carrow, BLM, Cadastral Surveyor, notes state "The cor. of secs. 10, 11, 14, and 15, as described in the official record."
- April 1984 Cass County Land Corner Record, records of the CCSO, indicates Co. Surveyor and USFS dug down 2.5 feet, concrete monument is gone. Set USFS magnet from 1976 BLM reference monuments and USFS tie tree South 58.0' to 20d nail in Poplar.
- May 2013 B.Hippen, technician, CCSO, records of the CCSO, found a 7/8" outside diameter iron pipe, down 0.1 foot, 5 feet, more or less, north of the centerline of Co. Rd. No. 65.
- Oct. 2013 B.Hippen, technician, CCSO, records on file in the CCSO, set a 1 inch by 30 inch aluminum tube with aluminum cap monument from recovered witnesses, which fits the 1966 Schneider position, down 0.05 feet, 5 feet, more or less, north of the new centerline of CSAH #65 and on the centerline of CSAH #74, witnessed as follows:
 

10" Aspen stump	South	58.30 feet (1967)	2.5" Alum post	N 44° E	85.20 feet (1976)
2.5" Alum post	N 41° W	97.74 feet (1976)	P. Pole	N 56° W	79.93 feet
Tele Ped post	S 34° W	66.18 feet			

The recovered and established witnesses for this corner position are shown on the face of this document.

**Analysis of the recovered record data, field evidence and survey measurements, indicates that the position monumented in 2013 by the CCSO, is the correct perpetuation of this corner.**

**County Coordinates (Cass County North)**

**Northing 247725.42**

**Easting 598898.52**