



A000598894

OFFICE OF THE COUNTY RECORDER  
CASS COUNTY, MINNESOTA  
CERTIFIED, FILED, AND/OR  
RECORDED ON

12/12/2013 9:20:01 AM

AS DOC #: A000598894

PAGES: 3

REC FEES: 0.00

KATHRYN M. NORBY  
CASS COUNTY RECORDER

BY SR Dep

Twp 133 Rge 29 Index No. J.0-09.0

# CERTIFICATE OF LOCATION OF GOVERNMENT CORNER

Northeast corner of Section 17, Township 133 N., Range 29 W., 5th P.M.  
State of Minnesota, County of Cass

At the corner location shown on the sketch:

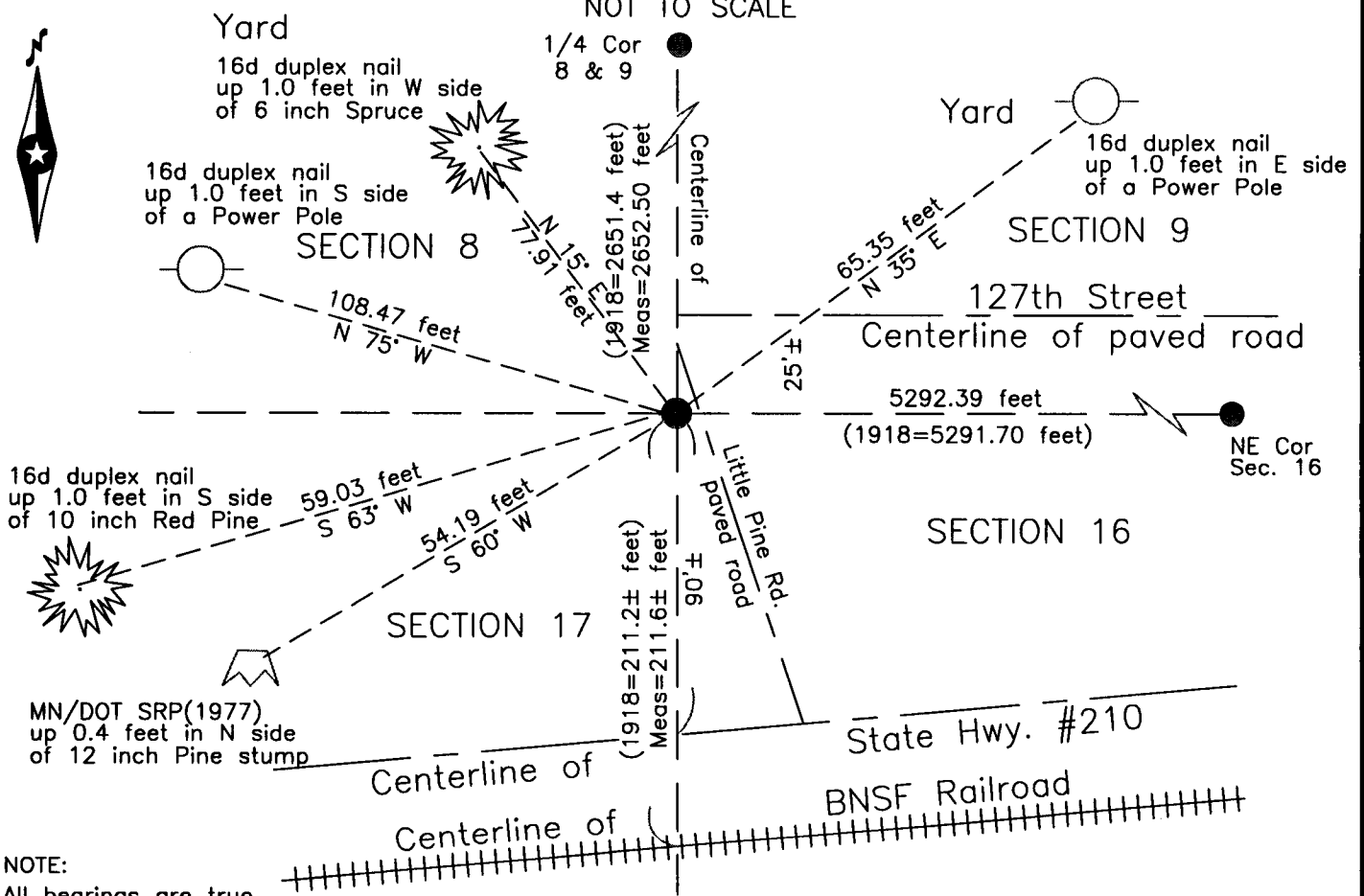
On 27 June 2001 found a 100d spike, down 0.2 foot, 1'± west of centerline

Little Pine Road, 90'± north of centerline of State Highway Number 210.

left monument as found     lowered monument     removed monument (explain)

On 12 Aug. 2013 placed a concrete nail, flush on centerline of Little Pine Road

## SKETCH OF REFERENCE TIES NOT TO SCALE



NOTE:  
All bearings are true

Statement of evidence relative to this corner location is on the back of this page.

I hereby certify that this survey, plan or report was prepared by me or under my direct supervision and that I am a duly Licensed Land Surveyor under the laws of the State of Minnesota.

Terry L. Freeman, Cass County Surveyor  
Date 12/11/13 MN License No. 21367

**Index No. 13329J.0-09.0**Statement of Evidence**Northeast corner Section 17, Township 133 North, Range 29 West, 5th Principal Meridian.**

- Oct. 1870 Walker, Allen & Putnam, General Land Office (GLO) Deputy Surveyors in the subdivision of this township set a post for the original corner. These notes call for a crossing of the NPRR center line at 3.36 chains (221.76 feet) south of the subject corner. The post was referenced as follows:  
 5" Red Oak S 52° W 17 links (11.22 feet) 9" Black Pine S 68 1/2° E 50 links (33.00 feet)  
 8" Black Pine N 18 1/2° E no distance 10" Black Pine N 48 1/2° W no distance  
 Said records are on file with the Minnesota Historical Society, St. Paul, Minnesota, copies are filed with the Cass County Surveyor's Office (CCSO).
- Note: The entries in these notes of all other crossings of the railroad state "NPRR Centre Line – Graded". Construction of the Northern Pacific Railroad began in July of 1870 near Carlton and had reached the Red River Valley by the end of the year.
- April 1886 Q.A.Averill, surveyor, plat of GULL RIVER, recorded with the Crow Wing County Register of Deeds in Book A of Town Plats and later with the Cass County Recorder as Plat 16. The plat which has been vacated was dependent on the subject corner.
- Circa 1900 Northern Pacific Railroad right-of-way map on file at the Cass County Auditor's office shows the angle of intersection of the railroad centerline with the west line of the NW ¼ of Section 16 as 79°39' south to west. The map does not indicate any stationing of the intersection, nor any symbol at the subject section corner.
- 1905 W.M.Hallett, surveyor, Township Road Order, Surveyors Report, on file in the CCSO, indicates the monument to be found.
- July 1915 P.Boese, Deputy under J.Curo, LS 1428, County Surveyor, County Record Book of Survey B, No.325, pages 424 and 430 and Curo Field Book 100, pages 19 and 20, on file in the CCSO, survey for Township Roads, states "we find an old post in the ground...we find...a red oak stump burned off level...S 52°W 13.2 feet, all marks are obliterated, black pine 9 inch 68°30'E 42.7 feet with U.S. marks on same, black pine 9 inch N 18°30'E with Gov't marks O.K. We accept the old post as being O.K. as all three bearings check and distances are close. This post has been accepted as the original for 25 years, where I drive a 2 inch iron pipe...I run N on random line 2651.4 feet at this point I find an old ¼ post".
- Circa 1915 J.M.Greene, County Surveyor, Curo Field Book 100, pages 54 and 55, on file in the CCSO, survey for Sylvan Township, states "Cor. 8-9-16-17....Miss. Bench S. 4°15' E 264.4....J.P. N.49°24' E 121.5 – H.B.M.....Tel. Ploe S. 68°05' W 23.2....T.H. #2 -22' North....214' CL Railroad....19.8 E. to B.M."
- May 1918 E.B.Horst, RLS 376, acting County Surveyor, County Record Book of Survey C, No.400, page 129, and CuroField Book 153, page 26, survey for a township road, on file in the CCSO, states "set transit on the corner of sections 8-9-16-17 marked by an iron monument and backsight N. on the ¼ between sections 8 and 9 and run S 5°00'E. 211.2 ft. to center of N.P. Railway track". The pictorial on Book C, page 126 shows the subject corner to be previously established and gives a distance of 2651.4 feet northerly to the west quarter corner of section 9 which was also previously established.
- June 1920 Northern Pacific Railway Company Minn. Division Right of Way Plat of Section 17, T.133 N., R.29 W. attached to Right of Way Permit No.2285, on file in the CCSO, indicates a distance of 213 feet from the railroad centerline to the subject corner. No symbol or label is shown at said corner.
- Aug. 1920 R.E.Krueger, Engineer, FAP 142, Job 2001, Brainerd Motley Road, gravel pit survey, Curo Field Book 118, page 4, on file in the CCSO indicates the subject corner.
- 1925 Minnesota Power & Light Co., Sylvan – Pillager H.E. Development, Land and Flowage Survey, on file in the CCSO, indicates two symbols at or near the subject corner, one denotes existing the other obliterated.
- Un-known Minnesota Department of Transportation (MN/DOT) Trunk Highway No. 210 right-of-way map indicates an iron pipe in place, 83.5 feet northerly of the highway centerline P.O.T. Sta. 806+58.7 and 2666.5 feet south of the quarter corner common to section 8 and 9.
- June 1977 A.Welle, LS 11873, MN/DOT, in a signed, unrecorded Certificate of Location of Government Corner on file at the Brainerd MN/DOT office states "found a axle shaft in poured concrete...placed a 1-1/2" Capped iron pipe down 6" ". A note on the document states "REPLACEMENT TIES – NO HISTORY SEARCH MADE". The following accessories are noted:  
 Copper nail & disk 6" J. Pine NW 38.23 feet Copper nail & disk 20" J. Pine NE 136.94 feet  
 Copper nail & disk Power pole NE 84.08 feet Copper nail & disk 6" N. Pine SW 54.19 feet
- June 2001 B.Hippen and N.Gilbertson, CCSO technicians, notes on file in the CCSO, while doing corner search at the request of Sylvan Township prior to road work, found a 100 penny spike 0.2 feet below the road surface perpetuating the 1977 MN/DOT recovery, 1 foot west of centerline of Little Pine Road and 90 feet north of the centerline of T.H. # 210. The following accessories were noted:  
 5" Juniper N 15° E 77.91 feet 12" N. Pine S 60° W 54.19 feet (MN/DOT disk)  
 Power Pole N 75° W 108.47 feet Power Pole N 40° E 84.08 feet (MN/DOT disk)



**Index No. 13329J.0-09.0**

Aug. 2003 B.Grivna, LS 17253, found a nail, 9.80 southerly of the position recovered by the CCSO in 2001, a Certificate of Location of Government Corner was recorded on his recovery in the Cass County Recorders Office as Document Number 473005. The following accessories are noted:  
spike in J. Pine N 75° W 43.50 feet spike in Red Pine S 60° W 51.30 feet  
spike in Power Pole N 40° E 70.50 feet found spike North 9.80 feet

June 2006 B.Hippen, CCSO technician, notes on file in the CCSO, set a concrete nail in the centerline of Little Pine Road from the 2001 CCSO witnesses and measured 211.6 feet southerly, at a 5 degree deflection from the section line to the north, to the existing centerline of the railroad and 2652.50 feet northerly to the recovered quarter corner common to sections 8 and 9.  
Upon contact, Bruce Grivna stated that he was aware of the 1977 Welle position and that MN/DOT had not been using it.

Aug. 2013 B.Hippen, CCSO technician, records of the CCSO, found a concrete nail in the centerline of Little Pine Road. The following accessories were noted:  
6" Spruce N 40° W 67.84 feet 12" N. Pine stump S 60° W 54.19 feet (1977)  
Power Pole N 35° E 65.35 feet Power Pole N 75° W 108.47 feet (2001)  
10" N. Pine S 63° W 59.03 feet

The monument together with the recovered and established references for the position are shown on the face of this document.

Analysis of the recovered record data, field evidence and survey measurements, indicates that the 1977 Welle position recovered and witnessed by the CCSO in 2001 agrees with the 1915 County Surveyor recovery and the Railroad Right of Way Plat and is the correct perpetuation of this corner.

**County Coordinates (Cass County South)**

**Northing 167208.12**  
**Easting 529856.96**