

CERTIFICATE OF LOCATION OF GOVERNMENT CORNER

East Quarter Corner of Section 24
Township 139 N , Range 27 W , 5th P.M.
STATE OF MINNESOTA, COUNTY OF Cass



A000598880

OFFICE OF THE COUNTY RECORDER
CASS COUNTY, MINNESOTA
CERTIFIED, FILED, AND/OR
RECORDED ON

12/12/2013 9:19:47 AM

AS DOC #: A000598880

PAGES: 2

REC FEES: 0.00

KATHRYN M. NORBY
CASS COUNTY RECORDER
BY SR Dep

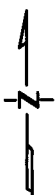
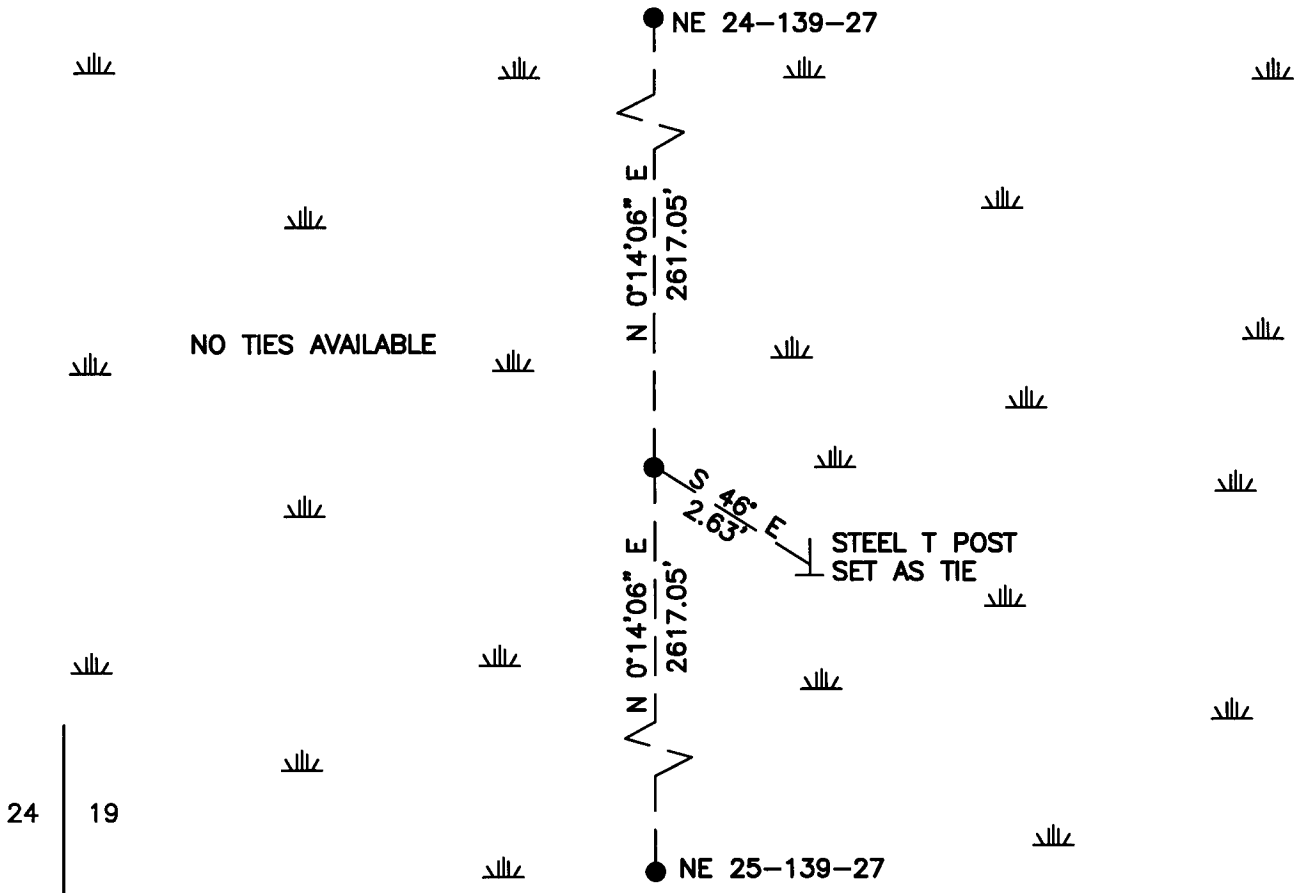
On 1/23/2013, found a(n): Steel T Post Lying Flat in Swamp
DATE

- left monument as found
- lowered monument
- removed monument (explain)
- raised monument

On 1/23/2013, set a(n): 5/8"x48" Rebar With Plastic Cap
Stamped "Leas MN 42619" up 1.0' in Swamp.
DATE

See "Statement of Evidence" for further details (on back)

(reserved for recording data)



"SKETCH OF REFERENCE TIES"
(not to scale - bearings are magnetic)

Ties are measured to center of monument unless otherwise noted.

UNITS = Metric English

CASS COUNTY SOUTH COORDINATES

Northing: 349408.208

Easting: 609349.594

NAD 83/2007 Adjustment.

Obtained by RTK GPS observations.

I hereby certify that this survey, plan, or report was prepared by me or under my direct supervision, and that I am a duly Licensed Land Surveyor under the laws of the State of Minnesota.

signature
Jarrett M. Leas, Minnesota License No. 42619

9-30-13
date

Page 1 of 2 A000598880

Statement of Evidence**East Quarter corner of Section 24, Township 139 North, Range 27 West, 5th Principal Meridian.**

- 1863 The US General Land Office, in notes of the running the east line of Township 139 North, Range 27 West, set a post for the original corner and referenced it as follows:
7" Aspen S 13° E 147 links 8" Pine S 89° W 96 links
Said records are on file with the Minnesota Historical Society, St. Paul, Minnesota, copies are filed with the Cass County Surveyor's Office (CCSO).
- 1940 CCC Washburn Lake field book no. 8, on file at the DNR office in Brainerd show CCC personnel chained from the NE 24, 2640' south falls in creek, set corner at 2613' from north 6' west of line.
- 1986 W. Buckler, LS 9672, Buckler map of monuments, on file in the CCSO, shows corner in place.
- 2013 Jarrett Leas, LS 42619, March 2013, in correspondence with Mr. Buckler by telephone, determined the steel T post was set by Mr. Buckler as the corner circa mid 1980's. Mr. Buckler explained the T post set at the midpoint and on line between the northeast and southeast corners of section 24. No ties were established.
- 2013 KLJ field crews searched the area and found a T-post lying down flat in a swamp. A KLJ field crew set a 5/8" x 48" rebar with plastic cap stamped "Leas MN 42619" at the midpoint and on line between the northeast and southeast corners of section 24 to mark the corner position based on Mr. Buckler's testimony of how the T post was set. The found T-post was set as a witness to the corner as shown on the front of this certificate. Jarrett Leas, RLS #42619, after analysis of record and survey information accepts this monument as the correct perpetuation of the corner.