

# CERTIFICATE OF LOCATION OF GOVERNMENT CORNER

Southeast Corner of Section 33  
Township 139 N , Range 27 W , 5th P.M.  
STATE OF MINNESOTA, COUNTY OF Cass



A000598876

OFFICE OF THE COUNTY RECORDER  
CASS COUNTY, MINNESOTA  
CERTIFIED, FILED, AND/OR  
RECORDED ON

12/12/2013 9:19:43 AM

AS DOC #: A000598876

PAGES: 2

REC FEES: 0.00

KATHRYN M. NORBY  
CASS COUNTY RECORDER

BY SR \_\_\_\_\_ Dep

Page 1 of 2  
A000598876

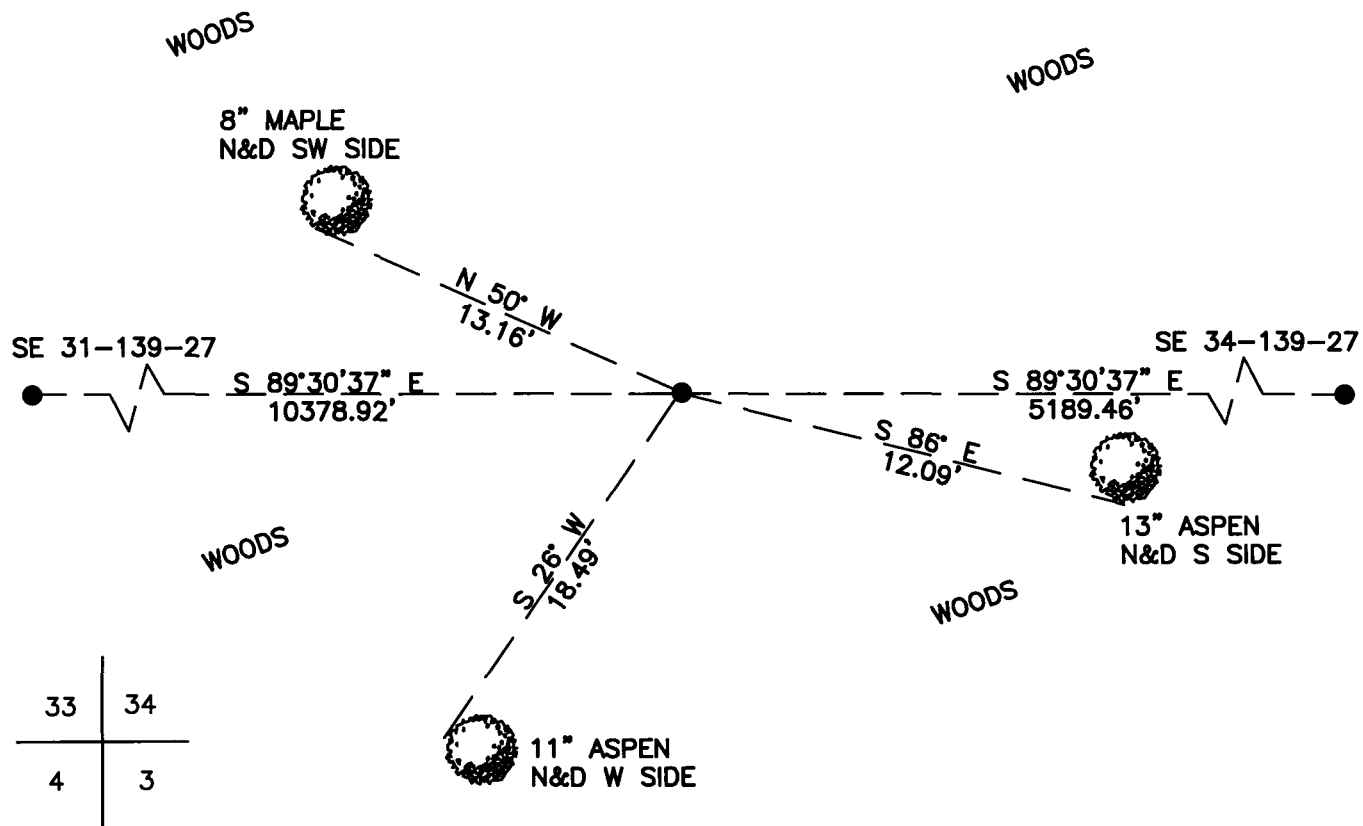
On \_\_\_\_\_, found a(n): \_\_\_\_\_  
DATE

- left monument as found
- lowered monument
- removed monument (explain)
- raised monument

On 1/22/2013, set a(n): 5/8"x24" Rebar With Plastic Cap  
DATE  
Stamped "Leas MN 42619" up 0.5'.

See "Statement of Evidence" for further details (on back)

(reserved for recording data)



**"SKETCH OF REFERENCE TIES"**  
(not to scale - bearings are magnetic)

Ties are measured to center of monument unless otherwise noted.

UNITS =  Metric  English

CASS COUNTY SOUTH COORDINATES

Northing: 336444.445

Easting: 593838.406

NAD 83/2007 Adjustment.  
Obtained by RTK GPS observations.

I hereby certify that this survey, plan, or report was prepared by me or under my direct supervision, and that I am a duly Licensed Land Surveyor under the laws of the State of Minnesota.

*Jarrett M. Leas*  
signature  
Jarrett M. Leas, Minnesota License No. 42619

9-30-13  
date



Statement of Evidence

**Southeast corner of Section 33, Township 139 North, Range 27 West, 5th Principal Meridian.**

- 1863    The US General Land Office, in notes of running the south line of Township 139 North, Range 27 West, set a post for the original corner and referenced it as follows:
- |             |         |          |             |         |          |
|-------------|---------|----------|-------------|---------|----------|
| 20" W. Pine | N 23° E | 15 links | 24" W. Pine | S 65° E | 37 links |
| 22" Y. Pine | S 37° W | 34 links | 15" W. Pine | N 65° W | 35 links |
- Said records are on file with the Minnesota Historical Society, St. Paul, Minnesota, copies are filed with the Cass County Surveyor's Office (CCSO).
- 1937    CCC Washburn Lake field book 2, page 6, on file at the DNR office in Brainerd show CCC personnel at 72.26 ch from the west 1.64 ch north of a 3" square Aspen stake.
- 1939    CCC Washburn Lake field book 10, page 16, on file at the DNR office in Brainerd show CCC personnel, at 5280' from the east, set a 3" dry Aspen stake at the approximate corner.
- 2013    KLJ field crews searched the area and found nothing. This corner was set lost by single proportion between the Southeast corner of Section 31 and the Southeast corner of Section 34. A 5/8" x 24" rebar with plastic cap stamped "Leas MN 42619" was set to mark the corner position and is witnessed with the ties shown on the front of this certificate. Jarrett Leas, RLS #42619, after analysis of record and survey information accepts this monument as the correct perpetuation of the corner.