

CERTIFICATE OF LOCATION OF GOVERNMENT CORNER

Southeast Corner of Section 31
Township 139 N , Range 27 W , 5th P.M.
STATE OF MINNESOTA, COUNTY OF Cass



A000598874

OFFICE OF THE COUNTY RECORDER
CASS COUNTY, MINNESOTA
CERTIFIED, FILED, AND/OR
RECORDED ON

12/12/2013 9:19:41 AM

AS DOC #: A000598874

PAGES: 2

REC FEES: 0.00

KATHRYN M. NORBY
CASS COUNTY RECORDER

BY SR _____ Dep

Page 1 of 2 A000598874

On 1/16/2013, found a(n): 2" Square Tube With Aluminum
Cap up 0.3'.
DATE

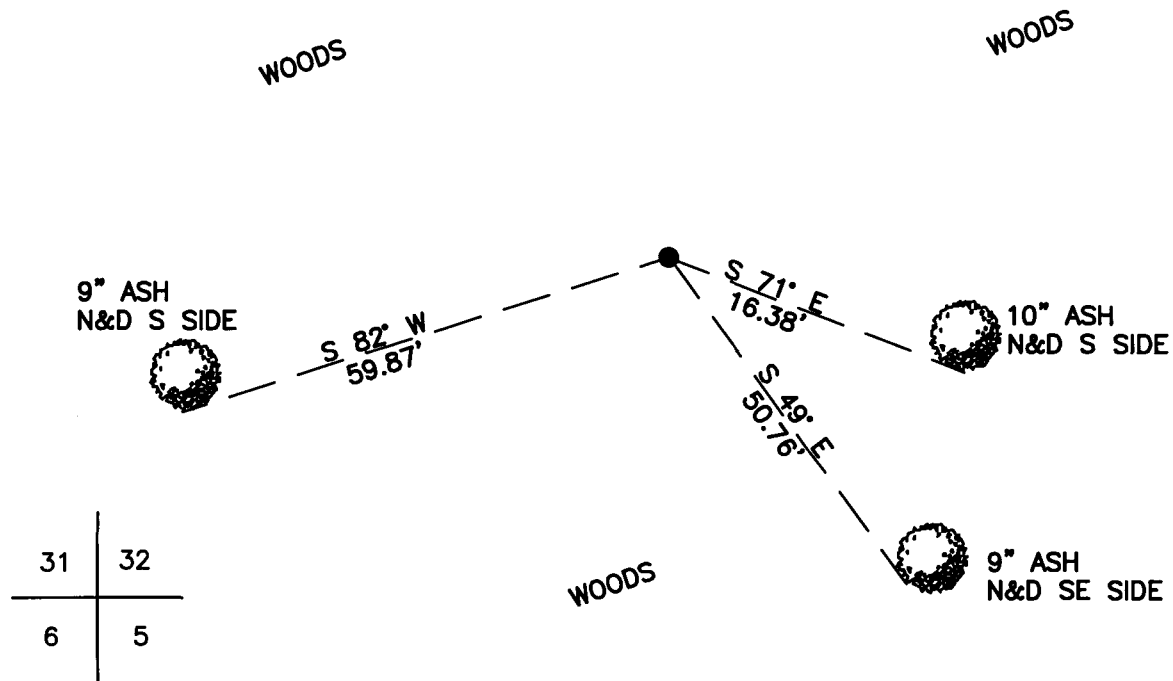
- left monument as found
- removed monument (explain)
- lowered monument
- raised monument

On _____, set a(n): _____
DATE

See "Statement of Evidence" for further details (on back)

(reserved for recording data)

NOTE: NAIL AND DISK
ADDED TO EXISTING TIES AND
ALL TREES BLAZED



31	32
6	5

"SKETCH OF REFERENCE TIES"
(not to scale - bearings are magnetic)

Ties are measured to center of monument unless otherwise noted.

UNITS = Metric English

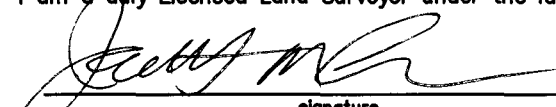
CASS COUNTY SOUTH COORDINATES

Northing: 336533.147

Easting: 583459.868

NAD 83/2007 Adjustment.
Obtained by RTK GPS observations.

I hereby certify that this survey, plan, or report was prepared by me or under my direct supervision, and that I am a duly Licensed Land Surveyor under the laws of the State of Minnesota.


signature
Jarrett M. Leas, Minnesota License No. 42619

9-30-13
date



Statement of Evidence

Southeast corner of Section 31, Township 139 North, Range 27 West, 5th Principal Meridian.

1863 The US General Land Office, in notes of running the south line of Township 139 North, Range 27 West, set a post for the original corner and referenced it as follows:

6" Aspen	N 46° E	21 links	6" W. Birch	S 64° E	26 links
16" N. Pine	S 45° W	7 links	5" W. Birch	N 27° W	11 links

Said records are on file with the Minnesota Historical Society, St. Paul, Minnesota, copies are filed with the Cass County Surveyor's Office (CCSO).

1937 CCC Washburn Lake field book 2, page 4, on file at the DNR office in Brainerd show CCC personnel set a 3" Tamarack stake with a tag.

1939 CCC Washburn Lake field book 10, page 20, on file at the DNR office in Brainerd show CCC personnel, at 5280' from the east, set a 3" Birch stake as a temp corner.

2013 A KLJ survey crew found a 2" square tube with an aluminum cap, and is witnessed with the ties shown on the front of this certificate. Jarrett Leas, RLS #42619, after analysis of record and survey information accepts this monument as the correct perpetuation of the corner.