

CERTIFICATE OF LOCATION OF GOVERNMENT CORNER

E1/4 Corner of Section 13, Township 36N, Range 32W, 5th p.m., State of Minnesota, County of Cass

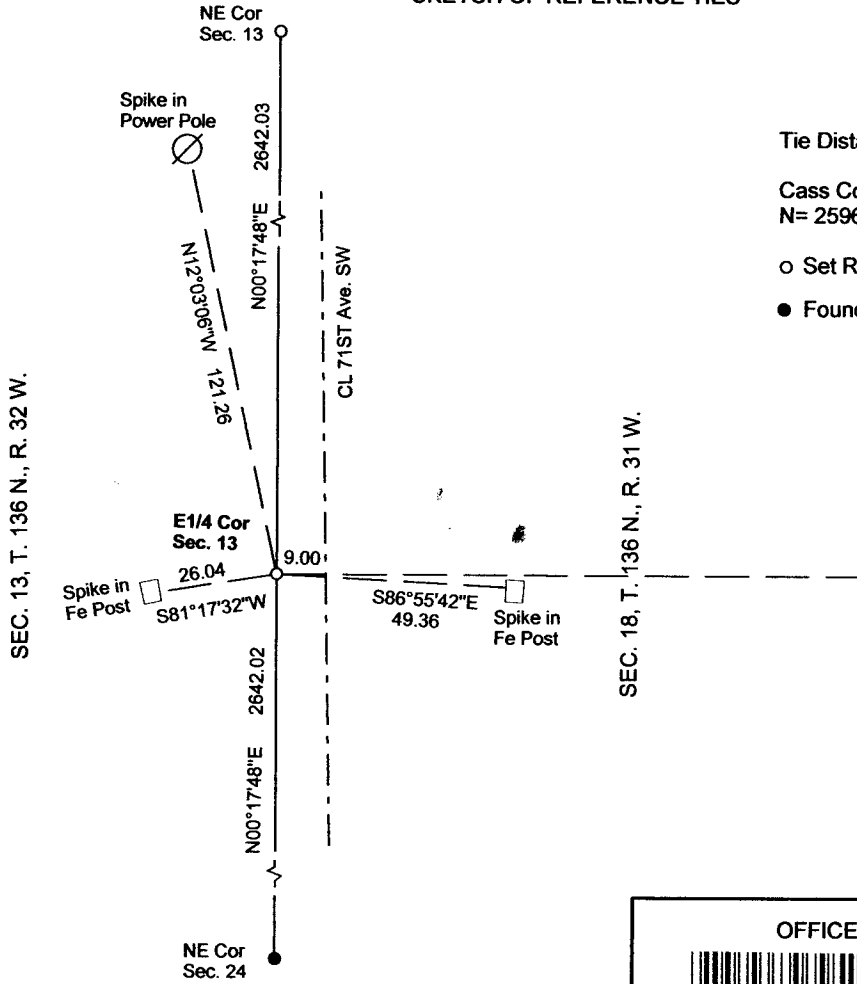
At the corner location shown on the sketch:

On _____ found a _____
Date _____

left monument as found lowered monument removed monument (explain)

On 04/30/2012 placed a 3/8" RE-ROD WITH RLS CAP NO. 17774, 9' +/- WEST OF CL 71ST AVE SW
Date _____

SKETCH OF REFERENCE TIES



Tie Distances are measured to the spikes.

Cass County Coordinate System (South Zone)
N= 259613.5202 E= 452644.9158

o Set Re-Rod with RLS cap No. 17774

● Found Pipe



SEC. 13, T. 136 N., R. 32 W.

SEC. 18, T. 136 N., R. 31 W.

NOT TO SCALE

Statement of evidence relative to this corner location is on back of page.

I hereby certify that this document and the data contained herein was prepared by me or under my direct supervision.

Marvin R. Kohout 10 Oct 2012
Marvin R. Kohout Date

Registration No. 17774

Land surveyor

OFFICE OF COUNTY RECORDER



A000598678

OFFICE OF THE COUNTY RECORDER
CASS COUNTY, MINNESOTA
CERTIFIED, FILED, AND/OR
RECORDED ON

12/5/2013 9:30:45 AM

AS DOC #: A000598678

PAGES: 2

REC FEES: 0.00

KATHRYN M. NORBY
CASS COUNTY RECORDER

BY SR Dep

Page 1 of 2 A000598678



INDEX NO. L.0 – 25.0
STATEMENT OF EVIDENCE:

EAST QUARTER CORNER OF SECTION 13, TOWNSHIP 136 N., RANGE 32 W., 5TH P.M.

- 1858 DEPUTY SURVEYOR EDWARD D. ATWATER, IN THE ORIGINAL GOVERNMENT SURVEY, SET A POST AND MARKED BEARING TREES.

- 1916 JOHN CURO, COUNTY SURVEYOR, DOES A ROAD SURVEY ALONG PARTS OF THE SOUTH AND WEST TOWNSHIP LINES FOR T136-R 31 SURVEY RECORD 290 CURO BOOK B PAGE 247- 257

- 2012 APRIL DOUG STILLE AND MARVIN KOHOUT, LS NO.17774, OF KOHOUT LAND SURVEYING, SEARCHED FOR EVIDENCE OF THIS CORNER. NO EVIDENCE FOUND. A 3/8" DIA. RE-ROD WAS PLACED MIDWAY AND ON LINE BETWEEN THE NORTHEAST CORNER SEC. 24 AND THE NORTHEAST CORNER OF SEC. 13