

CERTIFICATE OF LOCATION OF GOVERNMENT CORNER

NE Corner of Section 7, Township 136N, Range 31W, 5th p.m., State of Minnesota, County of Cass

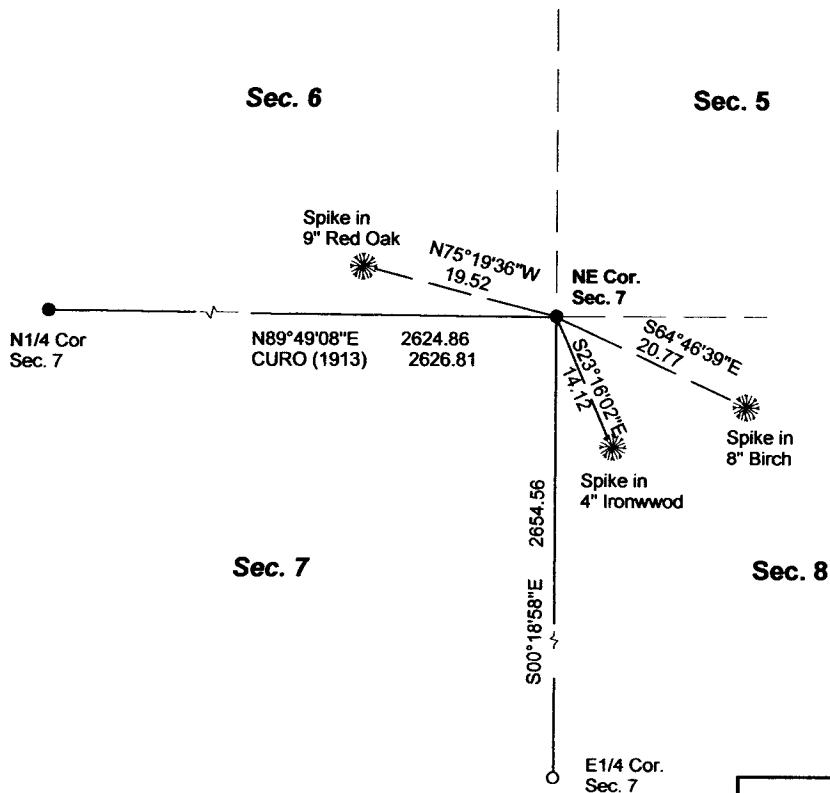
At the corner location shown on the sketch:

On 04/26/2012 found a 2 1/2" PIPE, IN CONCRETE
Date

left monument as found lowered monument removed monument (explain)

On _____ placed a _____
Date

SKETCH OF REFERENCE TIES

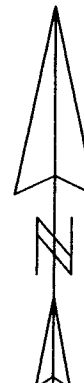


Tie Distances are measured to the spikes.

Cass County Coordinate System (South Zone)
N= 267557.9512 E= 460104.8533

○ Set Re-Rod with RLS cap No. 17774

● Found Pipe



NOT TO SCALE

Statement of evidence relative to this corner location is on back of page.

I hereby certify that this document and the data contained herein was prepared by me or under my direct supervision.

Marvin R. Kohout 20 Oct 2012
Marvin R. Kohout Date

Registration No. 17774

Land surveyor

OFFICE OF COUNTY RECORDER



A000598673

OFFICE OF THE COUNTY RECORDER
CASS COUNTY, MINNESOTA
CERTIFIED, FILED, AND/OR
RECORDED ON

12/5/2013 9:30:40 AM

AS DOC #: A000598673

PAGES: 2

REC FEES: 0.00

KATHRYN M. NORBY
CASS COUNTY RECORDER

BY SR Dep

Page 1 of 2 A000598673



INDEX NO. E.0 – 5.0
STATEMENT OF EVIDENCE:

NORTHEAST CORNER OF SECTION 7, TOWNSHIP 136 N., RANGE 31 W., 5TH P.M.

- 1870 DEPUTY SURVEYOR RICHARD CRONK, IN THE ORIGINAL GOVERNMENT SURVEY, SET A POST AND MARKED BEARING TREES.

- 1913 JOHN CURO, SURVEYOR, FOUND THE OLD BEARING TREE STUMPS AND SET A 3"X 3"X 20" OAK HUB. HE LATER SETS A 2 1/2"X 48" GALV. PIPE IN CONCRETE AND MAKES NEW TIES. SURVEY RECORD 240 BOOK "B" PAGES 26-27 ALSO SURVEY RECORD 4562

- 1950 WILLIAM SPAIN, JR., LS NO. 2003, FOUND THE CORNER PIPE SPAIN BOOK 1949 PAGES 42-45

- 2012 APRIL DOUG STILLE AND MARVIN KOHOUT, LS NO. 17774, OF KOHOUT LAND SURVEYING, FOUND CURO'S 2 1/2" PIPE AND ACCEPTED IT AS MARKING THE LOCATION OF THE NORTHEAST CORNER.

STATE OF IOWA
COUNTY OF [illegible]
[illegible]