

# CERTIFICATE OF LOCATION OF GOVERNMENT CORNER

NE Corner of Section 24, Township 136N, Range 32W, 5th p.m., State of Minnesota, County of Cass

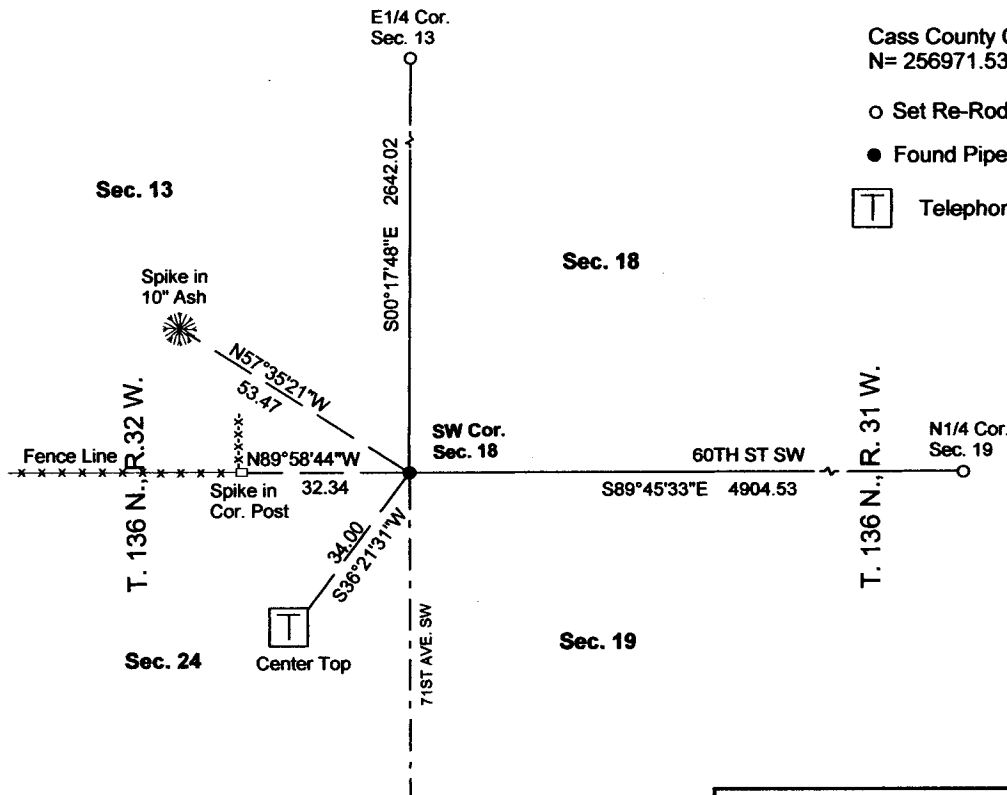
At the corner location shown on the sketch:

On 04/11/2012 found a 1/2" PIPE WITH RLS CAP NO. 44881  
Date

left monument as found      lowered monument      removed monument (explain)

On \_\_\_\_\_ placed a \_\_\_\_\_  
Date

## SKETCH OF REFERENCE TIES



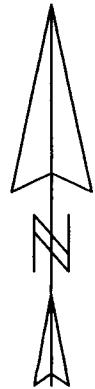
Tie Distances are measured to the spikes

Cass County Coordinate System (South Zone)  
N= 256971.5306 E= 452631.2355

o Set Re-Rod with RLS cap No. 17774

● Found Pipe

☐ Telephone Pedestal



NOT TO SCALE

Statement of evidence relative to this corner location is on back of page.

I hereby certify that this document and the data contained herein was prepared by me or under my direct supervision.

*Marvin R. Kohout* 1 April 2013  
Marvin R. Kohout Date

Registration No. 17774

Land surveyor

OFFICE OF COUNTY RECORDER



A000598668

OFFICE OF THE COUNTY RECORDER  
CASS COUNTY, MINNESOTA  
CERTIFIED, FILED, AND/OR  
RECORDED ON

12/5/2013 9:30:35 AM

AS DOC #: A000598668

PAGES: 2

REC FEES: 0.00

KATHRYN M. NORBY  
CASS COUNTY RECORDER

BY SR \_\_\_\_\_ Dep



INDEX NO. N.0 – 25.0

STATEMENT OF EVIDENCE:

**NORTHEAST CORNER OF SECTION 24, TOWNSHIP 136 N., RANGE 32 W., 5<sup>TH</sup> P.M.**

- 1858 DEPUTY SURVEYOR EDWARD D. ATWATER, IN THE ORIGINAL GOVERNMENT SURVEY, SET A POST AND MARKED BEARING TREES.
  
- 1916 HAROLD F. BALDWIN, DEPUTY COUNTY SURVEYOR, SET A POST MIDWAY AND ON LINE WITH THE SOUTHWEST CORNER OF SECTION 7 AND THE SOUTHWEST CORNER OF SECTION 19 SURVEY RECORD 290 BOOK "B" PAGE 256
  
- 1922 E.B. HORST, DEPUTY COUNTY SURVEYOR, FOUND 2 1916 TIES AND SET A HUB, WHICH HE LATER REPLACED WITH A 1 1/4" X 36" PIPE AND SET 2 WITNESS PIPES: N45W 46.7 FEET AND N45E 46.7 FEET. SURVEY RECORD 547 BOOK "D" PAGE 184
  
- 2012 CINDY HIDDE, LS NO. 44881, STONEMARK LAND SURVEYING, INC.,  
MARCH SEARCHED FOR BUT FOUND NO RECORD OF EVIDENCE. SHE SET A 1/2" PIPE WITH RLS CAP NO. 44881 AT THE INTERSECTION OF THE CENTERLINE OF 60<sup>TH</sup> STREET AND THE CENTERLINE OF 71<sup>ST</sup> AVENUE. REFERENCES: DOUBLE HEADED SPIKE IN THE NORTH FACE OF AN 8" ASH N58W 53.50 FEET; SPIKE IN THE SOUTH FACE OF CORNER FENCE POST S90W 32.37 FEET; DOUBLE HEADED NAIL IN 8" ASH N82E 164.22 FEET.
  
- 2012 APRIL DOUG STILLE AND MARVIN KOHOUT, LS NO. 17774, OF KOHOUT LAND SURVEYING, FOUND A 1/2" PIPE WITH RLS CAP NUMBER 44881. THE FOUND 1/2" PIPE IS ACCEPTED AS MARKING THE LOCATION OF THE NORTHEAST CORNER OF SECTION 24. FOUND SPIKE IN TREE NW AND CORNER POST TO WEST