

CERTIFICATE OF LOCATION OF GOVERNMENT CORNER

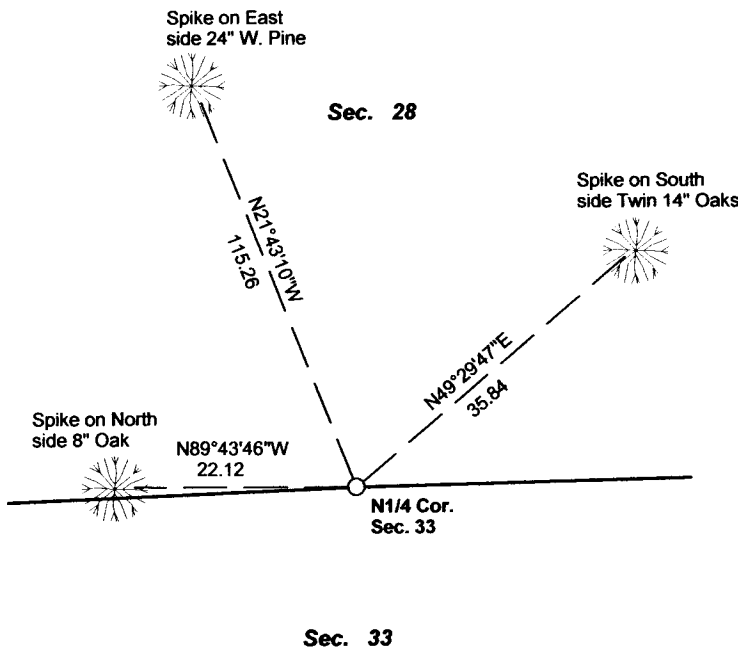
N1/4 Corner of Section 33, Township 138N, Range 31W, 5th p.m., State of Minnesota, County of Cass.

At the corner location shown on the sketch:

On _____ found a _____
Date _____

left monument as found	lowered monument	removed monument (explain)
On <u>12/26/2012</u> placed a <u>1/2" X 60" PIPE WITH RLS CAP NO. 17774</u>		
Date _____		

SKETCH OF REFERENCE TIES



Tie Distances are measured to the spikes.

Cass County Coordinate System (South Zone)
N= 309948.9104 E= 464287.3696

○ Set 1/2" X 60" Pipe with RLS cap No. 17774

● Found Pipe



NOT TO SCALE

Statement of evidence relative to this corner location is on back of page.

I hereby certify that this document and the data contained herein was prepared by me or under my direct supervision.

Marvin R. Kohout 31 Dec 2012
Marvin R. Kohout Date

Registration No, 17774

Land surveyor

OFFICE OF COUNTY RECORDER



A000598667

**OFFICE OF THE COUNTY RECORDER
CASS COUNTY, MINNESOTA
CERTIFIED, FILED, AND/OR
RECORDED ON**

12/5/2013 9:30:34 AM

AS DOC #: A000598667

PAGES: 2

REC FEES: 0.00

**KATHRYN M. NORBY
CASS COUNTY RECORDER**

BY SR Dep

Page 1 of 2 A000598667



INDEX NO. V.0 - 11.0

STATEMENT OF EVIDENCE

NORTH QUARTER CORNER SECTION 33, TOWNSHIP 138N, RANGE 31W, 5TH P.M.

- NOV. 1870 T.B. WALKER, GENERAL LAND OFFICE (GLO) DEPUTY SURVEYOR SET A POST FOR THE ORIGINAL CORNER AND MARKED B.T.'S. REFERENCES ARE:
- OCT. 1915 J.A. JOHNSTON, CASS COUNTY, STATES "AT CHAINAGE 2640 SEARCHED CAREFULLY FOR ¼ CORNER WHERE U.S. SURVEY CALLS FOR.... COUNTRY BADLY BURNED AND NO SIGN OF BEARING TREES COULD BE FOUND. ABOUT 100' SOUTH A NUMBER OF DRY TAMARACK STAND IN A WET MEADOW BUT NONE BARE MARKS THAT WOULD IDENTIFY THEM AS BEARING TREES." SURVEY RECORD NO. 365, BOOK "B" PAGE 587
- AUG. 2006 B. HIPPEN, CCSO TECHNICIAN, RECORDS OF CCSO, MADE A SEARCH AT THIS POSITION AND FOUND IT TO BE IN AN OPEN MARSH. THIS POSITION FITS WELL WITH LAND CALLS
- 2012 MARVIN KOHOUT, LS NO. 17774¹ AND DOUG STILLE, TECHNICIAN, OF KOHOUT LAND SURVEYING, SEARCHED FOR EVIDENCE OF THIS CORNER, NOTHING FOUND. A 1/2" X 60" PIPE WITH RLS CAP NO.17774 WAS SET MIDWAY AND ON LINE BETWEEN THE NORTHEAST CORNER OF SECTION 33 AND THE NORTHEAST CORNER OF SECTION 32.