

CERTIFICATE OF LOCATION OF GOVERNMENT CORNER

Northeast Corner of Section 9
Township 138 N , Range 30 W , 5th P.M.
STATE OF MINNESOTA, COUNTY OF Cass



A000597182

**OFFICE OF THE COUNTY RECORDER
CASS COUNTY, MINNESOTA
CERTIFIED, FILED, AND/OR
RECORDED ON**

10/10/2013 11:50:56 AM

AS DOC #: A000597182

PAGES: 2

REC FEES: 0.00

**KATHRYN M. NORBY
CASS COUNTY RECORDER**

BY SR Dep

Page 1 of 2 A000597182

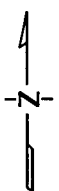
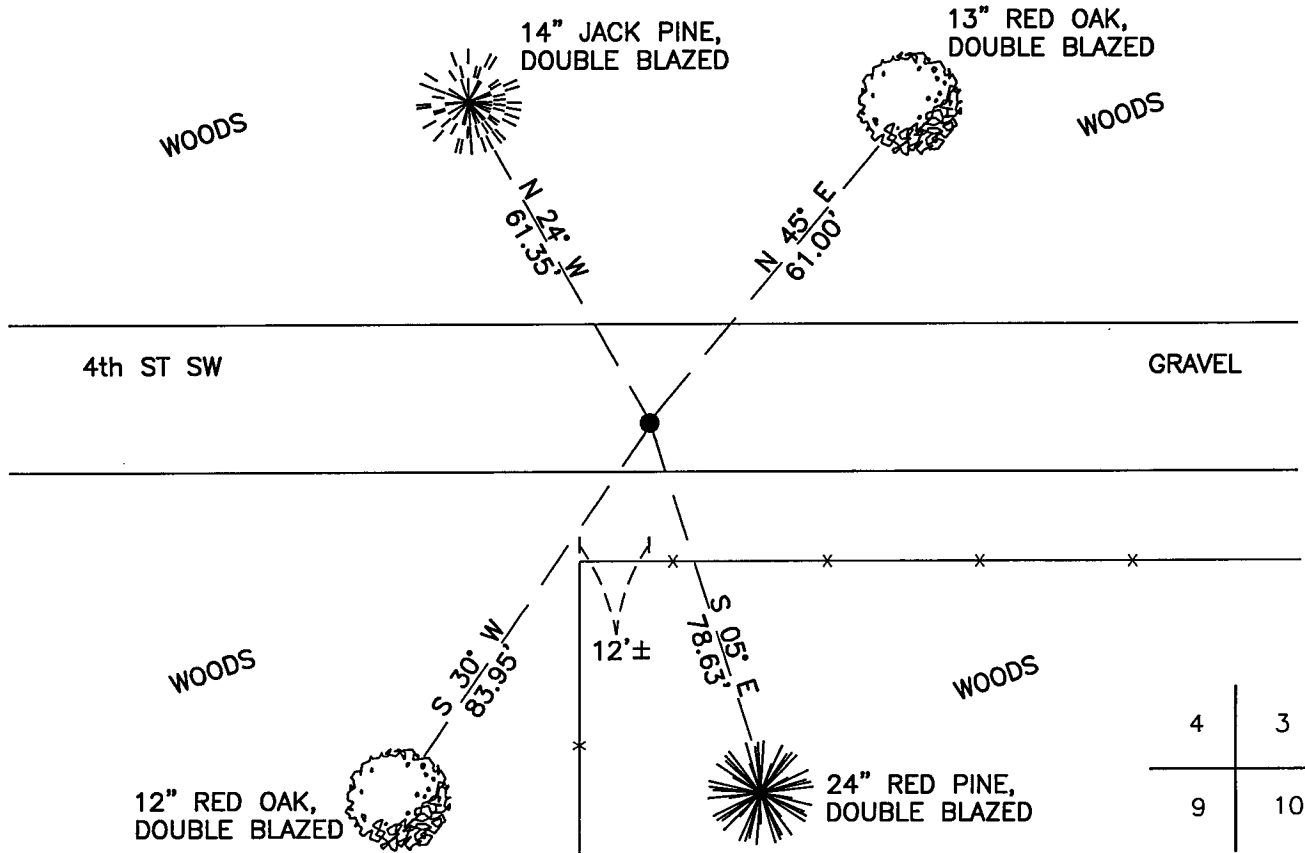
On 11/29/2012, found a(n): 1 1/4" Iron Pipe, Down 0.6' Below Gravel, ± 2' South of 4th St. SW.

- left monument as found lowered monument
 removed monument (explain) raised monument

On _____, set a(n): _____

See "Statement of Evidence" for further details (on back)

(reserved for recording data)



"SKETCH OF REFERENCE TIES"
(not to scale - bearings are magnetic)

Ties are measured to center of monument unless otherwise noted.

UNITS = Metric English

CASS COUNTY SOUTH COORDINATES

Northing: 331493.510

Easting: 498857.082

NAD 83/2007 Adjustment.

Obtained by RTK GPS observations.

I hereby certify that this survey, plan, or report was prepared by me or under my direct supervision, and that I am a duly licensed Land Surveyor under the laws of the State of Minnesota.

signature

2-1-13
date

Jarrett M. Leas, Minnesota License No. 42619



Statement of Evidence

Northeast corner Section 9, Township 138 North, Range 30 West, 5th Principal Meridian.

- Aug. 1865 G.B.Wright, GLO Deputy Surveyor, in the notes of the subdivision of Township 138 North, Range 30 West set a post for the original corner and referenced it as follows:
24" N Pine N 3° E 213 links (140.58 feet) 24" N Pine N 85° W 355 links (234.30 feet)
24" N Pine S 84° W 450 links (297.00 feet)
Said records are on file at the Minnesota Historical Society, St. Paul, Minnesota, copies are filed with the Cass County Surveyor's Office (CCSO).
- June 1917 J.W.Curo, RLS 1428, County Surveyor, working for Pine River Township, Micro Film Roll 10, Book 2, page 40, on file in the CCSO, states "We find the tall dry stub of the NE tree standing plainly marked and the short sawn stump of the SW tree plainly marked showing just the bottom edge of the BT spot from which we set the cor by flat chain from face of trees and drive a 20d spike." and states " An I.M. was set by old U.S. stake.
- Oct. 1922 EB. Horst, RLS 376, Curo Book 2, Page 86, dispalys a sketch depicting a 1X20" IM in place.
- May 2000 B.Hippen and C.Loe, CCSO technicians, notes of the CCSO found a 1.25 inch outside diameter iron pipe, down 0.3 foot, 4 feet more or less, south of the centerline of 4th Street and witnessed as follows:
9" R Oak N 45° E 61.00 feet 9" J Pine N 24° W 61.35 feet
18" R Pine S 5° E 78.63 feet 7" R Oak S 30° W 83.95 feet
- Mar. 2003 B.Dorniden, LS 23044, performed a survey in the south half of Section 4 for Mike Bauerly. The survey on file at the CCSO indicates the subject corner to be Found Iron.
- Apr. 2004 B.Grivna, LS 17253, Westwood Professional Services, Brainerd office, performed a survey in the northwest quarter of Section 10 for Jerry Fuhrer. The survey on file at the CCSO indicates the subject corner to be found.
- Mar. 2005 C.Hoglund, LS 43932, Westwood Professional Services, Brainerd office, performed a survey in the northwest quarter of Section 10 for Jerry Fuhrer. The survey on file at the CCSO indicates the subject corner to be found.
- July 2008 C.Hoglund, LS 43932, Westwood Professional Services, Brainerd office, performed a survey in the northwest quarter of Section 10 for Jerry Fuhrer. The survey on file at the CCSO indicates the subject corner to be found.
- Nov. 2012 A KLJ survey crew found a 1 1/4" Iron Pipe, and is witnessed with the ties shown on the front of this certificate. Jarrett Leas, RLS #42619, after analysis of record and survey information accepts this monument as the correct perpetuation of the corner.