

# CERTIFICATE OF LOCATION OF GOVERNMENT CORNER

North Quarter Corner of Section 13  
Township 138 N, Range 31 W, 5th P.M.  
STATE OF MINNESOTA, COUNTY OF Cass



A000597017

OFFICE OF THE COUNTY RECORDER  
CASS COUNTY, MINNESOTA  
CERTIFIED, FILED, AND/OR  
RECORDED ON

10/3/2013 2:30:58 PM

AS DOC #: A000597017

PAGES: 2

REC FEES: 0.00

KATHRYN M. NORBY  
CASS COUNTY RECORDER

BY SR Dep

Page 1 of 2 A000597017

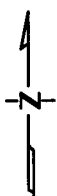
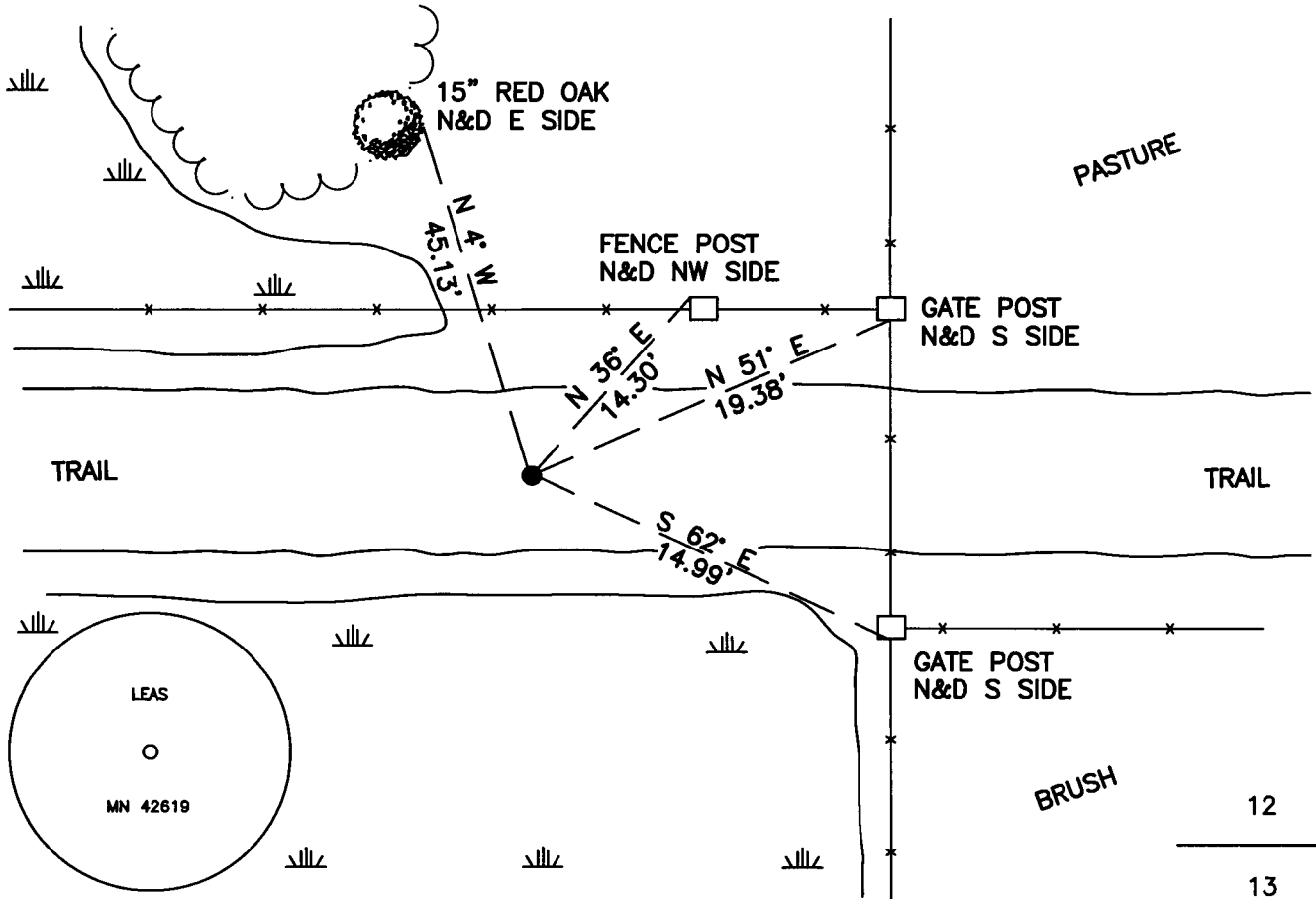
On 11/20/2012, found a(n): Broken, Triangle Shaped Piece of Cutting Edge Blade Lying Vertical Down 1.5'

- left monument as found
- removed monument (explain)
- lowered monument
- raised monument

On 11/27/2012, set a(n): 5/8" X 24" Rebar With Plastic Cap Stamped "Leas MN 42619" DOWN 0.2' ON C OF TRAIL.

See "Statement of Evidence" for further details (on back)

(reserved for recording data)



"SKETCH OF REFERENCE TIES"  
(not to scale - bearings are magnetic)

Ties are measured to center of monument unless otherwise noted.

UNITS =  Metric  English

CASS COUNTY SOUTH COORDINATES

Northing: 326292.159

Easting: 480378.739

NAD 83/2007 Adjustment.

Obtained by RTK GPS observations.

I hereby certify that this survey, plan, or report was prepared by me or under my direct supervision, and that I am a duly Licensed Land Surveyor under the laws of the State of Minnesota.

*Jarrett M. Leas*  
signature

4-30-2013  
date

Jarrett M. Leas, Minnesota License No. .42619



Statement of Evidence

**North Quarter corner Section 13, Township 138 North, Range 31 West, 5th Principal Meridian.**

- Nov. T.B.Walker, GLO Deputy Surveyor, in the notes of the subdivision of Township 138 North, Range 31 West  
1870 set a post for the original corner and referenced it as follows:  
30" W. Pine    N 84° E    32 links (21.12 feet)    6" Spruce    S 70° W    35 links (23.10 feet)  
Said records are on file at the Minnesota Historical Society, St. Paul, Minnesota, copies are filed with the  
Cass County Surveyor's Office (CCSO).
- Oct. J.H.Flynn, Cass County Surveyor, Survey Record 419, Book C, page 191, on file in the CCSO, states  
1919 "1/4 S. to sec's 12-13 in said township, which was:  
Wh P 30    N 84 E    32 links  
Spruce 6    S 70 W    35 links  
Now is: White Pine stub partly burned, 30 N 84 E 21 ft.  
Spruce 6(down in moss XX in edge of marsh cut it off about 6 ft.and found old govt ¼ thereon)  
S 70 west 23 ft. I put down Iron Mon. 2" by ½" by 30" and established following bearings:  
Jack pine 8    N 22 1/2 E  
Birch        9    S 43 1/2 E  
(I neglected to take the distance to these trees, if I did, I neglected to take it down)". The Pictorial on page  
193 indicates a 2 1/2 x 30" I.M.
- Feb. C.J.Bark, County Ditch No. 16, Book 97, Shelf 2, page 37, on file in the CCSO, indicates ¼ cor. wood  
1922 stake 68.5 feet, 47° 09' Northeast from Station 28+00 on East Line from Sta. 106+48.0 on North & South  
Random.
- April, B.Hippen CCSO technician, notes of the CCSO found a broken piece of an old grader blade, standing on  
2011 edge, down 1.5 feet, on the centerline of an old road grade where it leaves high ground and enters an  
Alder swamp as indicated by the 1919 notes.
- Nov. KLJ survey crew found a triangle shape steel cutting edge, standing vertical in the center of the trail,  
2012 down 1.5 feet. The position of the cutting edge measures 2636.90 feet to the found monument at the  
Northeast corner of Section 14, and also measures 2740.46 feet to the computed obliterated corner at the  
Northeast Corner of Section 13. Both of these distances match well with the Flynn 1919 survey record,  
and the found cutting edge fits well with the old east-west road grade. Jarrett Leas, RLS # 42619, after  
analysis of record and survey information accepts this monument as the correct perpetuation of the  
corner, and sets a 5/8 inch by 24 inch rebar with plastic cap stamped "Leas MN 42619" above the found  
cutting edge. Monument is witnessed with the ties shown on the front of this certificate.