

# CERTIFICATE OF LOCATION OF GOVERNMENT CORNER

Northeast Corner of Section 17  
Township 138 N, Range 31 W, 5th P.M.  
STATE OF MINNESOTA, COUNTY OF Cass



A000597016

OFFICE OF THE COUNTY RECORDER  
CASS COUNTY, MINNESOTA  
CERTIFIED, FILED, AND/OR  
RECORDED ON

10/3/2013 2:30:57 PM

AS DOC #: A000597016

PAGES: 2

REC FEES: 0.00

KATHRYN M. NORBY  
CASS COUNTY RECORDER

BY SR Dep

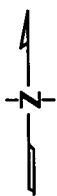
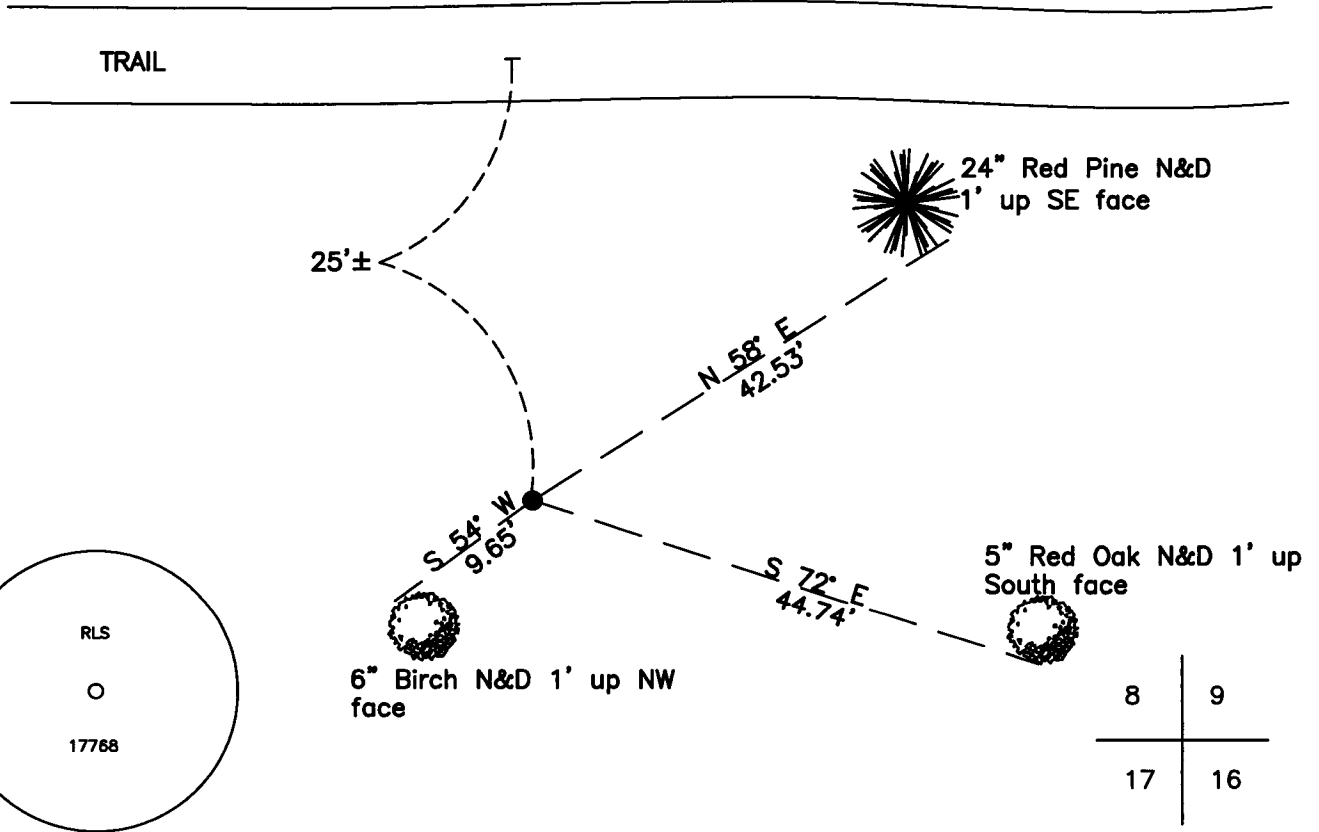
On 10/22/2012, found a(n): 1/2" Iron Pipe With Plastic Cap  
Stamped "RLS 17768" Up 0.3'.

- left monument as found
- removed monument (explain)
- lowered monument
- raised monument

On \_\_\_\_\_, set a(n): \_\_\_\_\_  
DATE

See "Statement of Evidence" for further details (on back)

(reserved for recording data)



"SKETCH OF REFERENCE TIES"  
(not to scale - bearings are magnetic)

Ties are measured to center of monument  
unless otherwise noted.

UNITS =  Metric  English

CASS COUNTY SOUTH COORDINATES

Northing: 325833.412

Easting: 462037.355

NAD 83/2007 Adjustment.

Obtained by RTK GPS observations.

I hereby certify that this survey, plan, or report was prepared by me or under my direct supervision, and that I am a duly Licensed Land Surveyor under the laws of the State of Minnesota.

signature

4-30-2013  
date

Jarrett M. Leas, Minnesota License No. 42619

Page 1 of 2 A000597016



Statement of Evidence

**Northeast corner of Section 17, Township 138 North, Range 31 West, 5th Principal Meridian.**

- Nov. 1870 T.B.Walker, General Land Office (GLO) Deputy Surveyor set a post for the original corner in his subdivision of this township and referenced it as follows:  
24" W. Pine    N 19° E    20 links (13.20 feet)    20" W. Pine    S 40° E    58 links(38.28 feet)  
18" N. Pine    S 44° W    59 links (38.94 feet)  
Said records are on file at the Minnesota Historical Society, St. Paul, Minnesota, copies are filed with the Cass County Surveyor's Office (CCSO).
- Sept 1, 2005 B.Hippen, technician, records of the CCSO, made a search at this position, and found a remains of a 40 inch pine stump, grading in this area would have destroyed other witnesses. No definitive evidence was found.
- Oct. 2012 A KLJ survey crew found a 1/2" Iron Pipe stamped "RLS 17768". KLJ contacted Bruce Skipton to inquire about his monument, and the evidence at the time of being set. Mr. Skipton informed KLJ that he was no longer an employee of the firm that was responsible for setting the monument and did not have access to the records, but he did have a clear recollection of the corner. Mr. Skipton stated that a thorough search was made for the corner or accessories, on two different occasions, but nothing ever found. The corner position was computed as a lost-double proportion, using the NE corner of Section 18, the Northeast Corner of Section 16, the Northeast Corner of Section 5 and the Southeast Corner of Section 32 and distances with nearby corners were found to be in harmony with GLO measured distances. Mr. Skipton further stated that his field crew did search for topographic features as called for in the running notes, and were also found to be in harmony. The found corner monument is witnessed with the ties shown on the front of this certificate. Jarrett Leas, RLS #42619, after analysis of record and survey information accepts this monument as the correct perpetuation of the corner.